

Recombinant Human IGSF6 Protein, Myc/DDK-tagged, C13 and N15-labeled

Cat. No. IGSF6-2054H **Lot. No.** (See product label)

SPECIFICATION

Product Overview	IGSF6 MS Standard C13 and N15-labeled recombinant protein (NP_005840) with a C-terminal MYC/DDK tag, was expressed in HEK293 cells.
Species	Human
Source	HEK293
Description	This gene is localized to a locus associated with inflammatory bowel disease. It is coded entirely within the intron of METTL9 which is transcribed in the opposite strand of the DNA.
Molecular Mass	27 kDa
AA Sequence	MGTASRSNIARHLQTNLILFCVGAVGACTLSVTQPWYLEVDYTHEAVTIKCTFSATG CPSEQPTCLWFRYGAHRPENLCLDGCKSEADKFTVREALKENQVSLTVNRVTSND SAIYICGIAFPSVPEARAKQTGGGTTLVVREIKLLSKELRSFLTALVLLSVYVTGVCV AFILLSKSKSNPLRNKKIKEDSQKKKSARRIFQEIAQELYHKRHVETNQQSEKDNNTY ENRRVLSNYERPTRTRPLEQKLISEEDLAANDILDYKDDDDKV
Purity	> 80% as determined by SDS-PAGE and Coomassie blue staining
Stability	Stable for 3 months from receipt of products under proper storage and handling conditions.

 Tel: 1-631-559-9269 1-516-512-3133

 Email: info@creative-biomart.com  Fax: 1-631-938-8127

 45-1 Ramsey Road, Shirley, NY 11967, USA

Storage	Store at -80 centigrade. Avoid repeated freeze-thaw cycles.
----------------	---

Concentration	50 µg/mL as determined by BCA
----------------------	-------------------------------

Storage Buffer	100 mM glycine, 25 mM Tris-HCl, pH 7.3.
-----------------------	---

GENE INFORMATION

Gene Name	IGSF6 immunoglobulin superfamily member 6 [Homo sapiens (human)]
------------------	--

Official Symbol	IGSF6
------------------------	-------

Synonyms	IGSF6; immunoglobulin superfamily, member 6; immunoglobulin superfamily member 6; DORA; down-regulated by activation (immunoglobulin superfamily);
-----------------	--

Gene ID	10261
----------------	-------

mRNA Refseq	NM_005849
--------------------	-----------

Protein Refseq	NP_005840
-----------------------	-----------

MIM	606222
------------	--------

UniProt ID	O95976
-------------------	--------

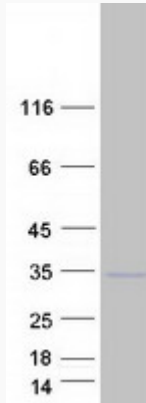
 Tel: 1-631-559-9269 1-516-512-3133

 Email: info@creative-biomart.com  Fax: 1-631-938-8127

 45-1 Ramsey Road, Shirley, NY 11967, USA



SDS-PAGE



Tel: 1-631-559-9269 1-516-512-3133

Email: info@creative-biomart.com Fax: 1-631-938-8127

45-1 Ramsey Road, Shirley, NY 11967, USA