

Recombinant Human IGSF8 Protein (Arg28-Thr579), C-His tagged

Cat. No. IGSF8-2919H **Lot. No.** (See product label)

SPECIFICATION

Product Overview	Recombinant human IGSF8 (Arg28-Thr579) protein fused with the C-terminal His tag was expressed in Mammalian cells.
Species	Human
Source	Mammalian Cells
ProteinLength	Arg28-Thr579
Molecular Mass	60.72 kDa
Purity	>90 % as determined by SDS-PAGE.
Notes	For research use only.
Storage	Use a manual defrost freezer and avoid repeated freeze thaw cycles. Store at 2 to 8 centigrade for one week. Store at -20 to -80 centigrade for twelve months from the date of receipt.
Storage Buffer	Supplied as solution form in PBS or lyophilized from PBS.
Reconstitution	Reconstitute in sterile water for a stock solution.
Shipping	In general, proteins are provided as lyophilized powder/frozen liquid. They are

 Tel: 1-631-559-9269 1-516-512-3133

 Email: info@creative-biomart.com  Fax: 1-631-938-8127

 45-1 Ramsey Road, Shirley, NY 11967, USA

shipped out with dry ice/blue ice unless customers require otherwise.

GENE INFORMATION

Gene Name	IGSF8 immunoglobulin superfamily, member 8 [Homo sapiens (human)]
Official Symbol	IGSF8
Synonyms	IGSF8; immunoglobulin superfamily, member 8; immunoglobulin superfamily member 8; CD81P3; CD316; EW12; PGRL; CD81 partner 3; prostaglandin regulatory-like protein; glu-Trp-Ile EW1 motif-containing protein 2; keratinocytes-associated transmembrane protein 4; EW1-2; KCT-4; LIR-D1;
Gene ID	93185
mRNA Refseq	NM_001206665
Protein Refseq	NP_001193594
MIM	606644
UniProt ID	Q969P0

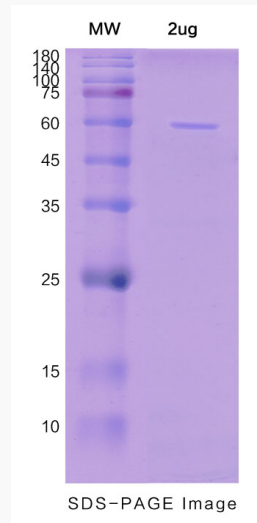
 Tel: 1-631-559-9269 1-516-512-3133

 Email: info@creative-biomart.com  Fax: 1-631-938-8127

 45-1 Ramsey Road, Shirley, NY 11967, USA



SDS-PAGE



Tel: 1-631-559-9269 1-516-512-3133

Email: info@creative-biomart.com Fax: 1-631-938-8127

45-1 Ramsey Road, Shirley, NY 11967, USA