

Active Recombinant Human IKBKB protein, His-tagged

Cat. No. IKBKB-1720H Lot. No. (See product label)

SPECIFICATION

Product Overview	Active Recombinant Human IKBKB protein(O14920)(246-528 aa), fused with N-terminal His tag, was expressed in E.coli.
Species	Human
Source	E.coli
ProteinLength	246-528 aa
Form	PBS, pH7.4, containing 0.01% SKL, 1mM DTT, 5% Trehalose and Proclin300.
Bio-activity	Inhibitor Of Kappa-Light Polypeptide Gene Enhancer In B-Cells Kinase Beta (IkbKb), a subunit of IKK, plays a crucial role in intracellular signaling, especially in inflammation and immune responses. In addition, the binding of TRAF6 to IkbKb is an important link in the immune response, which is not only involved in the initiation of inflammatory signals, but also in its regulation, thus a functional binding ELISA assay was conducted to detect the interaction of recombinant human IkbKb and recombinant mouse TRAF6. Briefly, IkbKb was diluted serially in PBS with 0.01% BSA (pH 7.4). Duplicate samples of 100 µl were then transferred to TRAF6-coated microtiter wells and incubated for 1h at 37°C. Wells were washed with PBST and incubated for 1h with anti-IkbKb pAb, then aspirated and washed 3 times. After incubation with HRP labelled secondary antibody for 1h at 37°C, wells were aspirated and washed 5 times. With the addition of substrate solution, wells were incubated 15-25 minutes at 37°C. Finally, add 50 µ stop solution to the wells and read at 450/630

 Tel: 1-631-559-9269 1-516-512-3133

 Email: info@creative-biomart.com  Fax: 1-631-938-8127

 45-1 Ramsey Road, Shirley, NY 11967, USA

nm immediately. The binding activity of recombinant human IκBκb and recombinant mouse TRAF6 was shown, the EC50 for this effect is 0.11 ug/mL.

Molecular Mass 62.3kDa

Endotoxin <1.0EU per 1μg (determined by the LAL method).

Purity > 90%

Storage Avoid repeated freeze/thaw cycles. Store at 2-8°C for one month. Store at -20°C for 12 months. Aliquot and store at -80°C for 12 months.

Reconstitution Reconstitute in 10mM PBS (pH7.4) to a concentration of 0.1-1.0 mg/mL. Do not vortex.

GENE INFORMATION

Gene Name IKBKB inhibitor of kappa light polypeptide gene enhancer in B-cells, kinase beta [[Homo sapiens](#)]

Official Symbol [IKBKB](#)

Synonyms IKBKB; inhibitor of kappa light polypeptide gene enhancer in B-cells, kinase beta; inhibitor of nuclear factor kappa-B kinase subunit beta; IKK beta; IKK2; IKKB; NFKB1KB; IKK-B; I-kappa-B kinase 2; I-kappa-B-kinase beta; nuclear factor NF-kappa-B inhibitor kinase beta; IKK-beta; FLJ33771; FLJ36218; FLJ38368; FLJ40509; MGC131801;

Gene ID [3551](#)

mRNA Refseq [NM_001190720](#)

 Tel: 1-631-559-9269 1-516-512-3133

 Email: info@creative-biomart.com  Fax: 1-631-938-8127

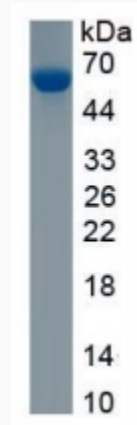
 45-1 Ramsey Road, Shirley, NY 11967, USA

Protein Refseq NP_001177649

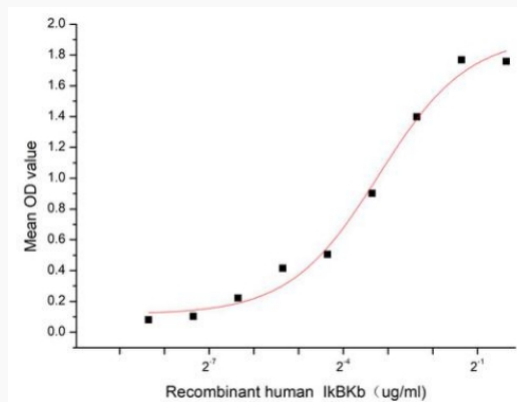
MIM 603258

UniProt ID O14920

SDS-PAGE



Activity



 Tel: 1-631-559-9269 1-516-512-3133

 Email: info@creative-biomart.com  Fax: 1-631-938-8127

 45-1 Ramsey Road, Shirley, NY 11967, USA