

Recombinant Human IKBKB Full Length Protein, His-tagged

Cat. No. IKBKB-2232H Lot. No. (See product label)

SPECIFICATION

Product Overview	Recombinant Human HOMER2 protein(150-343 aa), fused with N-terminal His tag, was expressed in E. coli.
Species	Human
Source	E.coli
ProteinLength	150-343 aa
Tag	N-His
Form	The purified protein was Lyophilized from sterile PBS (58mM Na ₂ HPO ₄ , 17mM NaH ₂ PO ₄ , 68mM NaCl, pH7.4). 5 % trehalose and 5 % mannitol are added as protectant before lyophilization.
Purity	85%, by SDS-PAGE with Coomassie Brilliant Blue staining.
Storage	Short-term storage: Store at 2-8°C for (1-2 weeks). Long-term storage: Aliquot and store at -20°C to -80°C for up to 3 months, reconstitution with sterile water and addition of an equal volume of glycerol. Avoid repeat freeze-thaw cycles.
Reconstitution	Reconstitute at 0.25 µg/µl in 200 µl sterile water for short-term storage. After reconstitution with sterile water, if glycerol has no effect on subsequent experiments, it is recommended to add an equal volume of glycerol for long-term storage.

 Tel: 1-631-559-9269 1-516-512-3133

 Email: info@creative-biomart.com  Fax: 1-631-938-8127

 45-1 Ramsey Road, Shirley, NY 11967, USA

AA Sequence

HLKSENDKLIKIALTQSAANVKKWEIELQTLRESNARLTTALQESAASVEQWKRQFSI
 CRDENDRLRNKIDELEEQCSEINREKEKNTQLKRRIEELEAELREKETELKDLRKQSE
 IIPQLMSECEYVSEKLEAAERDNQNLEDKVRSLKTDIEESKYRQRHLKVELKSFLEVL
 DGKIDDLHDFRRGLSKLGTDN

GENE INFORMATION

Gene Name [HOMER2 homer homolog 2 \(Drosophila\) \[Homo sapiens \]](#)

Official Symbol [HOMER2](#)

Synonyms HOMER2; homer homolog 2 (Drosophila); homer protein homolog 2; CPD; Cupidin; HOMER 2; HOMER 2A; HOMER 2B; Vesl 2; cupidin; homer homolog 3; homer, neuronal immediate early gene, 2; ACPD; VESL-2; HOMER-2;

Gene ID [9455](#)

mRNA Refseq [NM_004839](#)

Protein Refseq [NP_004830](#)

MIM [604799](#)

UniProt ID [Q9NSB8](#)

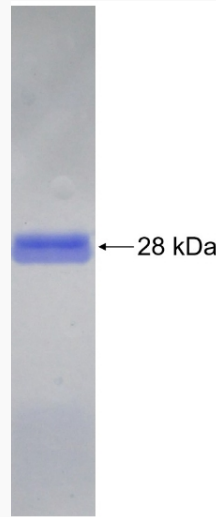
 Tel: 1-631-559-9269 1-516-512-3133

 Email: info@creative-biomart.com  Fax: 1-631-938-8127

 45-1 Ramsey Road, Shirley, NY 11967, USA



SDS-PAGE



Tel: 1-631-559-9269 1-516-512-3133

Email: info@creative-biomart.com Fax: 1-631-938-8127

45-1 Ramsey Road, Shirley, NY 11967, USA