

Recombinant Human IKBKB protein, His-tagged

Cat. No. IKBKB-3571H Lot. No. (See product label)

SPECIFICATION

Product Overview	Recombinant Human IKBKB protein(1-256 aa), fused with N-terminal His tag, was expressed in E.coli.
Species	Human
Source	E.coli
ProteinLength	1-256 aa
Form	The purified protein was Lyophilized from sterile PBS (58mM Na ₂ HPO ₄ , 17mM NaH ₂ PO ₄ , 68mM NaCl, pH7.4). 5 % trehalose and 5 % mannitol are added as protectant before lyophilization. The elution buffer contain 300mM imidazole.
AASequence	MSWSPSLTTQTCGAWEMKERLGTGGFGNVIRWHNQETGEQIAIKQCRQELSPRNR ERWCLEIQIMRRLTHPNVVAARDVPEGMQNLAPNDLPLLAMEYCGGDLRKYLNQF ENCCGLREGAILTLLSDIASALRYLHENRIIHRDLKPENIVLQQGEQRLIHKIIDLGyak ELDQGSLSCTSVGTLQYLAPELLEQQKYTVTVDYWSFGTLAFECITGFRPFLPNWQP VQCVRMWPGTVAHSCNPSTLGGGRWIS
Purity	85%, by SDS-PAGE with Coomassie Brilliant Blue staining.
Storage	Store at 2-8°C for 1-2 weeks. Aliquot and store at -20°C to -80°C for up to 3 months, reconstitution with sterile water and addition of an equal volume of glycerol. Avoid repeat freeze-thaw cycles.

 Tel: 1-631-559-9269 1-516-512-3133

 Email: info@creative-biomart.com  Fax: 1-631-938-8127

 45-1 Ramsey Road, Shirley, NY 11967, USA

Reconstitution

Dissolve the product in 200 µl sterile water to achieve a working concentration of 0.25 g/µl. If experimental compatibility allows, mix the aqueous solution with an equal volume of glycerol (1:1 ratio) after initial reconstitution.

GENE INFORMATION
Gene Name

IKBKB inhibitor of kappa light polypeptide gene enhancer in B-cells, kinase beta [Homo sapiens]

Official Symbol

IKBKB

Synonyms

IKBKB; inhibitor of kappa light polypeptide gene enhancer in B-cells, kinase beta; inhibitor of nuclear factor kappa-B kinase subunit beta; IKK beta; IKK2; IKKB; NFKB1KB; IKK-B; I-kappa-B kinase 2; I-kappa-B-kinase beta; nuclear factor NF-kappa-B inhibitor kinase beta; IKK-beta; FLJ33771; FLJ36218; FLJ38368; FLJ40509; MGC131801;

Gene ID

3551

mRNA Refseq

NM_001190720

Protein Refseq

NP_001177649

MIM

603258

UniProt ID

O14920

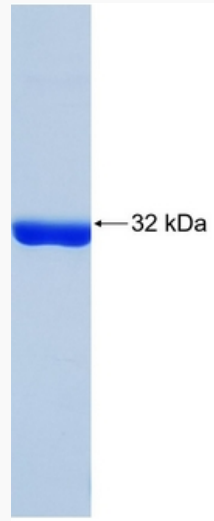
 Tel: 1-631-559-9269 1-516-512-3133

 Email: info@creative-biomart.com  Fax: 1-631-938-8127

 45-1 Ramsey Road, Shirley, NY 11967, USA



SDS-PAGE



☎ Tel: 1-631-559-9269 1-516-512-3133

☎ Email: info@creative-biomart.com ☎ Fax: 1-631-938-8127

☎ 45-1 Ramsey Road, Shirley, NY 11967, USA