

# Active Recombinant Full Length Human IKBKB Protein, C-Flag-tagged

**Cat. No.** IKBKB-421HFL    **Lot. No.** (See product label)

## SPECIFICATION

<b>Product Overview</b>	Recombinant Full Length Human IKBKB Protein, fused to Flag-tag at C-terminus, was expressed in Mammalian cells.
<b>Species</b>	Human
<b>Source</b>	Mammalian Cells
<b>Description</b>	The protein encoded by this gene phosphorylates the inhibitor in the inhibitor/NF-kappa-B complex, causing dissociation of the inhibitor and activation of NF-kappa-B. The encoded protein itself is found in a complex of proteins. Several transcript variants, some protein-coding and some not, have been found for this gene.
<b>Form</b>	25 mM Tris HCl, pH 7.3, 100 mM glycine, 10% glycerol.
<b>Bio-activity</b>	Binding assay
<b>Molecular Mass</b>	86.4 kDa
<b>AA Sequence</b>	MSWSPSLTTQTCGAWEMKERLGTGGFGNVIRWHNQETGEQIAIKQCRQELSPRNR ERWCLEIQIMRRLTH PNVVAARDVPEGMQNLPNDLPLLAMEYCQGGDLRKYLNQ FENCCGLREGAILTLLSDIASALRYLHENR IIHRDLKPENIVLQQGEQRLIHKIIDLGYA KELDQGSLSCTSFVGTLLQYLAPELLEQQKYTVTVDYWSFGT LAFECITGFRPFLPNW QPVQWHSKVRQKSEVDIVSEDLNGTVKFSSSLPYPNNLNSVLAERLEKWLQLM L MWHPRQRGTDPTYGPNGCFKALDDILNLKLVHILNMVTGTIHTYPTVEDESLQSLKA

 Tel: 1-631-559-9269    1-516-512-3133

 Email: [info@creative-biomart.com](mailto:info@creative-biomart.com)     Fax: 1-631-938-8127

 45-1 Ramsey Road, Shirley, NY 11967, USA



RIQQDTGIPEED QELLQEAGLALIPDKPATQCISDGKLNIGHTLDMDLVFLFDNSKIT  
YETQISPRPQPESVSCILQEPKRN LAFFQLRKVWGQVWHSIQTLKEDCNRLQQGQ  
RAAMNLLRNNSCLSKMKNSMASMSQQLKAKLDFFKTSI QIDLEKYSEQTEFGITS  
DKLLLAWREMEQAVELCGRENEVKLLVERMMALQTDIVDLQRSPMGRKQGGTL DD  
LEEQARELYRRLREKPRDQRTEGDSQEMVRLLLQAIQSFEKKVRVIYTQLSKTVVCK  
QKALELLPKVE EVVSLMNEDEKTVVRLQEKRQKELWNLLKIACSKVRGPVSGSPDS  
MNASRLSQPGQLMSQPSTASNSLPE  
PAKKSEELVAEAHNLCTLLENAIQDTRVREQDQSFTALDWSWLQTEEEEHSCLEQAS  
TRTRPLEQKLISEEDLAANDILDYKDDDDKV

**Purity** > 80% as determined by SDS-PAGE and Coomassie blue staining.

**Stability** Stable for 12 months from the date of receipt of the product under proper storage and handling conditions. Avoid repeated freeze-thaw cycles.

**Storage** Store at -80 centigrade.

**Concentration** >50 ug/mL as determined by microplate BCA method.

**Preparation** Recombinant protein was captured through anti-DDK affinity column followed by conventional chromatography steps.

**Protein Families** Druggable Genome, Protein Kinase, Transcription Factors

**Protein Pathways** Acute myeloid leukemia, Adipocytokine signaling pathway, Apoptosis, B cell receptor signaling pathway, Chemokine signaling pathway, Chronic myeloid leukemia, Cytosolic DNA-sensing pathway, Epithelial cell signaling in Helicobacter pylori infection, Insulin signaling pathway, MAPK signaling pathway, Neurotrophin signaling pathway, NOD-like receptor signaling pathway, Pancreatic cancer, Pathways in cancer, Prostate cancer, RIG-I-like receptor signaling pathway, Small cell lung

Tel: 1-631-559-9269 1-516-512-3133

Email: [info@creative-biomart.com](mailto:info@creative-biomart.com) Fax: 1-631-938-8127

45-1 Ramsey Road, Shirley, NY 11967, USA

cancer, T cell receptor signaling pathway, Toll-like receptor signaling pathway, Type II diabetes mellitus

**Full Length** Full L.

## GENE INFORMATION

**Gene Name** [IKBKB inhibitor of nuclear factor kappa B kinase subunit beta \[ Homo sapiens \(human\) \]](#)

**Official Symbol** [IKBKB](#)

**Synonyms** [IKK2](#); [IKKB](#); [IMD15](#); [IMD15A](#); [IMD15B](#); [NFKBIKB](#); [IKK-beta](#)

**Gene ID** [3551](#)

**mRNA Refseq** [NM\\_001556.3](#)

**Protein Refseq** [NP\\_001547.1](#)

**MIM** [603258](#)

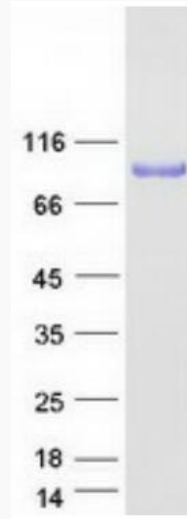
**UniProt ID** [O14920](#)

GST-NEMO (15 nM), preincubated with the inhibitor [SR12343] at indicated concentrations, was incubated with IKKbeta-FLAG for 30min at 30 centigrade and isolated using glutathione agarose. The levels of IKKbeta-FLAG binding to GST-NEMO were determined by Western blot analysis with GSTNEMO as a loading control.

 Tel: 1-631-559-9269 1-516-512-3133

 Email: [info@creative-biomart.com](mailto:info@creative-biomart.com)  Fax: 1-631-938-8127

 45-1 Ramsey Road, Shirley, NY 11967, USA



Coomassie blue staining of purified IKKβ protein.

 Tel: 1-631-559-9269 1-516-512-3133

 Email: [info@creative-biomart.com](mailto:info@creative-biomart.com)  Fax: 1-631-938-8127

 45-1 Ramsey Road, Shirley, NY 11967, USA