

Recombinant Human IKBKE Protein, Myc/DDK-tagged, C13 and N15-labeled

Cat. No. IKBKE-3352H **Lot. No.** (See product label)

SPECIFICATION

Product Overview	IKBKE MS Standard C13 and N15-labeled recombinant protein (NP_054721) with a C-terminal MYC/DDK tag, was expressed in HEK293 cells.
Species	Human
Source	HEK293
Description	IKBKE is a noncanonical I-kappa-B kinase (IKK) that is essential for regulating antiviral signaling pathways. IKBKE has also been identified as a breast cancer oncogene and is amplified and overexpressed in over 30% of breast carcinomas and breast cancer cell lines.
Molecular Mass	80.3 kDa
AA Sequence	<p>MQSTANYLWHTDDLLGQGATASVYKARNKKSGELVAVKVFNTTSYLRPREVQVRE FEVLRKLNHQNIVKLF AVEETGGSRQKVLVMEYCSSGSLLSVLESPENAFGLPEDEF LVVLRVAGMNHLENGIVHRDIKPGNIMRLVGEEGQSIYKLTDFGAARELDDDEK FVSVYGT EYLHPDMYERAVLRKPKQKAFGVTVDLWSIGVTLYHAATGSLPFIPFGG PRRNKEIMYRITTEKPAGAIAGAQRRENGPLEWSYTLPTCQLSLGLQSQLVPILANIL EVEQAKCWGFDQFFAETSDILQRVVVHVFSLSQAVLHHIYIHAHNTIAIFQEAVHKQT SVAPRHQEYLFEGHLCVLEPSVSAQHIAHTTASSPLTLFSTAIPKGLAFRDPALDVPK FVPKVDLQADYNTAKGVLGAGYQALRLARALLDQGELMFRGLHWVMEVLQATCRR TLEVARTSLLYLSSSLGTERFSSVAGTPEIQELKAAAELRSRLRTLAEVL SRC SQNITE</p>

 Tel: 1-631-559-9269 1-516-512-3133

 Email: info@creative-biomart.com  Fax: 1-631-938-8127

 45-1 Ramsey Road, Shirley, NY 11967, USA

TQESLSSLNRELVKSRDQVHEDRSIQQIQCCCLDKMNFYKQFKKSRMRPGLGYNEE
 QIHKLDKVNFSHLDKROLLQVFQEECVQKYQASLVTHGKRMRVVHETRNHLRLVGCS
 VAACNTEAQQGVQESLSKLEELSHQLLQDRAKGAQASPPPIAPYPSPTRKDLLLHMQ
 ELCEGMKLLASDLLDNNRIIERLNRVPAPPDVTRTRPLEQKLISEEDLAANDILDYKDD
 DDKV

Purity > 80% as determined by SDS-PAGE and Coomassie blue staining

Stability Stable for 3 months from receipt of products under proper storage and handling conditions.

Storage Store at -80 centigrade. Avoid repeated freeze-thaw cycles.

Concentration 50 µg/mL as determined by BCA

Storage Buffer 100 mM glycine, 25 mM Tris-HCl, pH 7.3.

GENE INFORMATION

Gene Name IKBKE inhibitor of nuclear factor kappa B kinase subunit epsilon [Homo sapiens (human)]

Official Symbol IKBKE

Synonyms IKBKE; inhibitor of kappa light polypeptide gene enhancer in B-cells, kinase epsilon; inhibitor of nuclear factor kappa-B kinase subunit epsilon; IKK i; IKKE; KIAA0151; IKK-epsilon; I-kappa-B kinase epsilon; inducible IkappaB kinase; IKK-related kinase epsilon; inducible I kappa-B kinase; IKKI; IKK-E; IKK-i; MGC125294; MGC125295; MGC125297;

Gene ID 9641

 Tel: 1-631-559-9269 1-516-512-3133

 Email: info@creative-biomart.com  Fax: 1-631-938-8127

 45-1 Ramsey Road, Shirley, NY 11967, USA

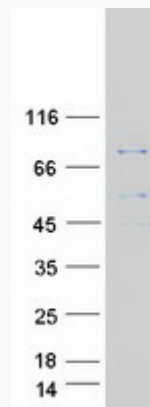
mRNA Refseq [NM_014002](#)

Protein Refseq [NP_054721](#)

MIM [605048](#)

UniProt ID [Q14164](#)

SDS-PAGE



 Tel: 1-631-559-9269 1-516-512-3133

 Email: info@creative-biomart.com  Fax: 1-631-938-8127

 45-1 Ramsey Road, Shirley, NY 11967, USA