

Active Recombinant Full Length Human IKBKE Protein, GST-tagged

Cat. No. IKBKE-9992HF **Lot. No.** (See product label)

SPECIFICATION

Product Overview	Full-length human IKKε [1-716(end) amino acids of accession number NP_054721.1] was expressed as N-terminal GST-fusion protein (108 kDa) using baculovirus expression system. GST-IKKε was purified by using glutathione sepharose chromatography.
Species	Human
Source	Sf21 Cells
ProteinLength	1-716
Form	50 mM Tris-HCl, 150 mM NaCl, 0.05% Brij35, 1 mM DTT, 10% glycerol, pH7.5
Bio-activity	The activity was measured by off-chip mobility shift assay(MSA). The enzyme was incubated with fluorescence-labeled substrate and Mg(or Mn)/ATP. The phosphorylated and unphosphorylated substrates were separated and detected by MSA device.
Purity	54%
Applications	SDS-PAGE
Storage	Store at -80C. Avoid repeating freeze-thaws.

 Tel: 1-631-559-9269 1-516-512-3133

 Email: info@creative-biomart.com  Fax: 1-631-938-8127

 45-1 Ramsey Road, Shirley, NY 11967, USA

GENE INFORMATION

Gene Name inhibitor of kappa light polypeptide gene enhancer in B-cells, kinase epsilon

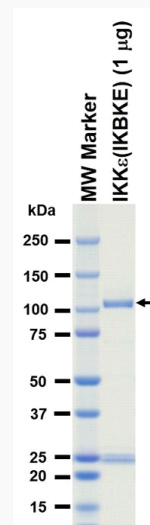
Official Symbol IKBKE

Synonyms IKBKE;IKK-E;IKK-i;IKKE;IKKI;KIAA0151


Protein Refseq [NP_054721.1](#)

UniProt ID [Q14164](#)


SDS-PAGE

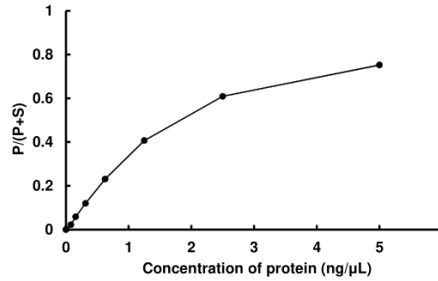


The purity was assessed by SDS-PAGE/CBB staining.

 Tel: 1-631-559-9269 1-516-512-3133

 Email: info@creative-biomart.com  Fax: 1-631-938-8127

 45-1 Ramsey Road, Shirley, NY 11967, USA

Activity data**Activity data**

The activity was measured by off-chip mobility shift assay(MSA). The enzyme was incubated with fluorescence-labeled substrate and Mg(or Mn)/ATP. The phosphorylated and unphosphorylated substrates were separated and detected by MSA device.

 Tel: 1-631-559-9269 1-516-512-3133

 Email: info@creative-biomart.com  Fax: 1-631-938-8127

 45-1 Ramsey Road, Shirley, NY 11967, USA