

# Recombinant Full Length Human IKBKG Protein, C-Flag-tagged

Cat. No. IKBKG-1054HFL Lot. No. (See product label)

## SPECIFICATION

### Product Overview

Recombinant Full Length Human IKBKG Protein, fused to Flag-tag at C-terminus, was expressed in Mammalian cells.

### Species

Human

### Source

Mammalian Cells

### Description

This gene encodes the regulatory subunit of the inhibitor of kappaB kinase (IKK) complex, which activates NF-kappaB resulting in activation of genes involved in inflammation, immunity, cell survival, and other pathways. Mutations in this gene result in incontinentia pigmenti, hypohidrotic ectodermal dysplasia, and several other types of immunodeficiencies. A pseudogene highly similar to this locus is located in an adjacent region of the X chromosome.

### Form

25 mM Tris HCl, pH 7.3, 100 mM glycine, 10% glycerol.

### Molecular Mass

48 kDa

### AA Sequence

MNRHLWKSQ LCEMVQPSGGPAADQDVLGEESPLGKPAMLHLPSEQGAPETLQRC  
LEENQELRDAIRQSNQ ILRERCEELLHFQASQREEKEFLMCKFQEARKLVERLGLEK  
LDLKRQKEQALREVEHLKRCQQQMAEDKA SVKAQVTSLLGELQESQSRLEAATKE  
CQALEGRARAASEQARQLESEREALQQQHSVQVDQLRMQGSVE AALRMERQA  
ASEEKRKLAQLQVAYHQLFQEYDNHIKSSVVGSEKRGMQLEDLKQQLQQAEEALV  
AKQEV IDKLKEEAQHKIVMETVPVLKAQADIYKADFQAERQAREKLAEEKELLQEQ

 Tel: 1-631-559-9269 1-516-512-3133

 Email: [info@creative-biomart.com](mailto:info@creative-biomart.com)  Fax: 1-631-938-8127

 45-1 Ramsey Road, Shirley, NY 11967, USA

LEQLQREYSKLIKASCQES ARIEDMRKRHVEVSQAPLPPAPAYLSSPLALPSQRRSP  
PEEPPDFCCPKCQYQAPDMDTLQIHVMECIETRTRPLEQKLISEEDLAANDILDYKDD  
DDKV

**Purity** > 80% as determined by SDS-PAGE and Coomassie blue staining.

**Stability** Stable for 12 months from the date of receipt of the product under proper storage and handling conditions. Avoid repeated freeze-thaw cycles.

**Storage** Store at -80 centigrade.

**Concentration** >50 ug/mL as determined by microplate BCA method.

**Preparation** Recombinant protein was captured through anti-DDK affinity column followed by conventional chromatography steps.

**Protein Families** Druggable Genome, Transcription Factors

**Protein Pathways** Acute myeloid leukemia, Adipocytokine signaling pathway, Apoptosis, B cell receptor signaling pathway, Chemokine signaling pathway, Chronic myeloid leukemia, Cytosolic DNA-sensing pathway, Epithelial cell signaling in Helicobacter pylori infection, MAPK signaling pathway, NOD-like receptor signaling pathway, Pancreatic cancer, Pathways in cancer, Primary immunodeficiency, Prostate cancer, RIG-I-like receptor signaling pathway, Small cell lung cancer, T cell receptor signaling pathway, Toll-like receptor signaling pathway

**Full Length** Full L.

## GENE INFORMATION

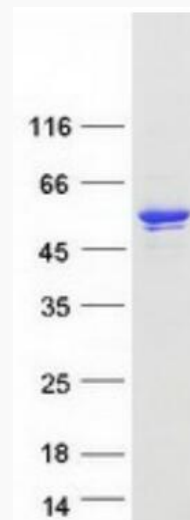
**Gene Name** [IKBKG inhibitor of nuclear factor kappa B kinase regulatory subunit gamma \[ Homo](#)

 Tel: 1-631-559-9269 1-516-512-3133

 Email: [info@creative-biomart.com](mailto:info@creative-biomart.com)  Fax: 1-631-938-8127

 45-1 Ramsey Road, Shirley, NY 11967, USA

	sapiens (human) ]
<b>Official Symbol</b>	<b>IKBKG</b>
<b>Synonyms</b>	IP; IP1; IP2; FIP3; IKKG; IPD2; NEMO; FIP-3; Fip3p; IMD33; SAIDX; AMCBX1; EDAID1; IKKAP1; ZC2HC9; IKK-gamma
<b>Gene ID</b>	<b>8517</b>
<b>mRNA Refseq</b>	<b>NM_003639.4</b>
<b>Protein Refseq</b>	<b>NP_003630.1</b>
<b>MIM</b>	<b>300248</b>
<b>UniProt ID</b>	<b>Q9Y6K9</b>



Coomassie blue staining of purified IKBKG protein.

 Tel: 1-631-559-9269 1-516-512-3133

 Email: [info@creative-biomart.com](mailto:info@creative-biomart.com)  Fax: 1-631-938-8127

 45-1 Ramsey Road, Shirley, NY 11967, USA