

# Recombinant Human IKBKG Protein, MYC/DDK-tagged, C13 and N15-labeled

Cat. No. IKBKG-360H Lot. No. (See product label)

## SPECIFICATION

### Product Overview

IKBKG MS Standard C13 and N15-labeled recombinant protein (NP\_003630) with a C-terminal MYC/DDK tag, was expressed in HEK293 cells.

### Species

Human

### Source

HEK293

### Description

This gene encodes the regulatory subunit of the inhibitor of kappaB kinase (IKK) complex, which activates NF-kappaB resulting in activation of genes involved in inflammation, immunity, cell survival, and other pathways. Mutations in this gene result in incontinentia pigmenti, hypohidrotic ectodermal dysplasia, and several other types of immunodeficiencies. A pseudogene highly similar to this locus is located in an adjacent region of the X chromosome. [provided by RefSeq, Mar 2016]

### Molecular Mass

48.2 kDa

### AA Sequence

MNRHLWKSQ LCEMVQPSGGPAADQDVLGEESPLGKPAMLHLPSEQGAPETLQRC  
LEENQELRDAIRQSNQILRERCEELLHFQASQREEKEFLMCKFQEARLVERLGLEK  
LDLKRQKEQALREVEHLKRCQQQMAEDKASVKAQVTSLLGELQESQSRLEAATKEC  
QALEGRARAASEQARQLESEREALQQQHSVQVDQLRMQGSVEAALRMERQAAS  
EEKRKLALQVAYHQLFQEYDNHIKSSVVGSERKRGMQLEDLKQQLQQAEEALVAK  
QEVIDKLKEEAEQHKIVMETVPVLKAQADIYKADFAERQAREKLAEKKELLQEQL  
QLQREYSK LKASCQESARIEDMRKRHVEVSQAPLPPAPAYLSSPLALPSQRRSPPE

 Tel: 1-631-559-9269 1-516-512-3133

 Email: [info@creative-biomart.com](mailto:info@creative-biomart.com)  Fax: 1-631-938-8127

 45-1 Ramsey Road, Shirley, NY 11967, USA

	EPPDFCCPKCQYQAPDMDTLQIHVMECIETRTRPLEQKLISEEDLAANDILDYKDDD DKV
<b>Purity</b>	> 80% as determined by SDS-PAGE and Coomassie blue staining
<b>Stability</b>	Stable for 3 months from receipt of products under proper storage and handling conditions.
<b>Storage</b>	Store at -80 centigrade. Avoid repeated freeze-thaw cycles.
<b>Concentration</b>	50 µg/mL as determined by BCA
<b>Storage Buffer</b>	100 mM glycine, 25 mM Tris-HCl, pH 7.3.
<b>GENE INFORMATION</b>	
<b>Gene Name</b>	IKBKG inhibitor of kappa light polypeptide gene enhancer in B-cells, kinase gamma [ Homo sapiens (human) ]
<b>Official Symbol</b>	IKBKG
<b>Synonyms</b>	IKBKG; inhibitor of kappa light polypeptide gene enhancer in B-cells, kinase gamma; incontinentia pigmenti, IP1, IP2; NF-kappa-B essential modulator; FIP 3; FIP3; Fip3p; IKK gamma; NEMO; IKKG; IKKAP1; incontinentia pigmenti; Ikb kinase gamma subunit; ikB kinase subunit gamma; NFkappaB essential modulator; NF-kappa-B essential modifier; I-kappa-B kinase subunit gamma; ikB kinase-associated protein 1; inhibitor of nuclear factor kappa-B kinase subunit gamma; IP; IP1; IP2; IPD2; FIP-3; AMCBX1; IKK-gamma;
<b>Gene ID</b>	8517

 Tel: 1-631-559-9269 1-516-512-3133

 Email: [info@creative-biomart.com](mailto:info@creative-biomart.com)  Fax: 1-631-938-8127

 45-1 Ramsey Road, Shirley, NY 11967, USA

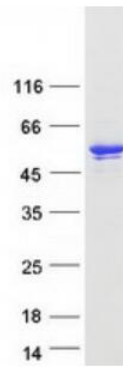
mRNA Refseq [NM\\_003639](#)


Protein Refseq [NP\\_003630](#)

MIM [300248](#)


UniProt ID [Q9Y6K9](#)

#### SDS-PAGE



 Tel: 1-631-559-9269 1-516-512-3133

 Email: [info@creative-biomart.com](mailto:info@creative-biomart.com)  Fax: 1-631-938-8127

 45-1 Ramsey Road, Shirley, NY 11967, USA