

## Recombinant Rhesus monkey IL10 protein, His-tagged

Cat. No. IL10-20R Lot. No. (See product label)

### SPECIFICATION

<b>Product Overview</b>	Recombinant Rhesus monkey IL10 protein is produced by E.coli expression system and is fused with a His tag at the N-terminal.
<b>Species</b>	Rhesus macaque
<b>Source</b>	E.coli
<b>ProteinLength</b>	Ser19-Asn178
<b>Form</b>	100 mM NaHCO <sub>3</sub> , 500 mM NaCl, pH 8.3, containing 1 mM EDTA, 1 mM DTT, 0.01 % SKL, 5 % Trehalose and Proclin 300.
<b>Molecular Mass</b>	23 kDa
<b>AA Sequence</b>	SPGQGTQSENSCTRFPGNLPHMLRDLRDAFSRVKTFQMKDQLDNILLKESLLEDF KGYLGQCQALSEMIQFYLEEVMQAENHDPDIKEHVNSLGENLKTLLRRLRRCHRFLP CENKSKAVEQVKNAFSLQKEKGVYKAMSEFDIFINYIEAYMTMKIQN
<b>Endotoxin</b>	<1.0EU per 1g (determined by the LAL method)
<b>Purity</b>	> 90 %, by SDS-PAGE with Coomassie Brilliant Blue staining.
<b>Applications</b>	Positive Control; Immunogen; SDS-PAGE; WB.
<b>Notes</b>	Avoid repeated freeze/thaw cycles.

 Tel: 1-631-559-9269 1-516-512-3133

 Email: [info@creative-biomart.com](mailto:info@creative-biomart.com)  Fax: 1-631-938-8127

 45-1 Ramsey Road, Shirley, NY 11967, USA

<b>Stability</b>	The thermal stability is described by the loss rate. The loss rate was determined by accelerated thermal degradation test, that is, incubate the protein at 37 centigrade for 48 h, and no obvious degradation and precipitation were observed. The loss rate is less than 5 % within the expiration date under appropriate storage condition.
<b>Storage</b>	Store at 2-8 centigrade for one month. Aliquot and store at -80 centigrade for 12 months.
<b>Reconstitution</b>	Reconstitute in 100mM NaHCO <sub>3</sub> , 500mM NaCl (pH8.3) to a concentration of 0.1-1.0 mg/mL. Do not vortex.

## GENE INFORMATION

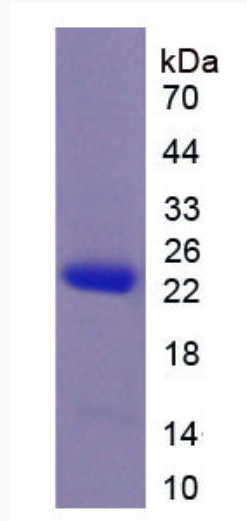
<b>Gene Name</b>	IL10 interleukin 10 [ <i>Macaca mulatta</i> ]
<b>Official Symbol</b>	IL10
<b>Synonyms</b>	CSIF; IL10A; TGIF; Cytokine Synthesis Inhibitory Factor; interleukin 10;
<b>Gene ID</b>	694931
<b>mRNA Refseq</b>	NM_001044727
<b>Protein Refseq</b>	NP_001038192

 Tel: 1-631-559-9269 1-516-512-3133

 Email: [info@creative-biomart.com](mailto:info@creative-biomart.com)  Fax: 1-631-938-8127

 45-1 Ramsey Road, Shirley, NY 11967, USA

IL10-20R, 1



 Tel: 1-631-559-9269 1-516-512-3133

 Email: [info@creative-biomart.com](mailto:info@creative-biomart.com)  Fax: 1-631-938-8127

 45-1 Ramsey Road, Shirley, NY 11967, USA