

Recombinant Rhesus monkey IL10 protein, His/GST-tagged

Cat. No. IL10-21R Lot. No. (See product label)

SPECIFICATION

Product Overview	Recombinant Rhesus monkey IL10 protein (Arg42~Ser159) was expressed in E. coli with Two N-terminal Tags, His-tag and GST-tag.
Species	Rhesus macaque
Source	E.coli
ProteinLength	42-159 a.a.
Description	IL-10 is a cytokine produced primarily by monocytes and to a lesser extent by lymphocytes. This cytokine has pleiotropic effects in immunoregulation and inflammation. It down-regulates the expression of Th1 cytokines, MHC class II Ags, and costimulatory molecules on macrophages. It also enhances B cell survival, proliferation, and antibody production. This cytokine can block NF-kappa B activity, and is involved in the regulation of the JAK-STAT signaling pathway.
Form	20mM Tris, 150mM NaCl, pH8.0, containing 1mM EDTA, 1mM DTT, 0.01% sarcosyl, 5% Trehalose and Proclin300.
Molecular Mass	42kDa as determined by SDS-PAGE reducing conditions.
AA Sequence	RELRFVAFGRVKTFQKQKQDLSMLLKESSLLEDFKGYLGQCQALSEMIQFYLEEVMPPQ AENHDPDIKEHVNSLGEKCLKTFRLRLRRCHRFLPCENKSKAVAQVKNVAVSKLQKEG VYKAMS

 Tel: 1-631-559-9269 1-516-512-3133

 Email: info@creative-biomart.com  Fax: 1-631-938-8127

 45-1 Ramsey Road, Shirley, NY 11967, USA

Purity	>92%
Applications	Positive Control; Immunogen; SDS-PAGE; WB
Stability	Samples are stable for up to twelve months from date of receipt at -70 centigrade.
Storage	Store it under sterile conditions at -20 centigrade to -80 centigrade upon receiving. Recommend to aliquot the protein into smaller quantities for optimal storage.
Concentration	200g/mL
Reconstitution	Reconstitute in 20mM Tris, 150mM NaCl (pH8.0) to a concentration of 0.1-1.0 mg/mL. Do not vortex.

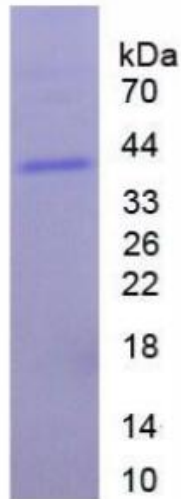
GENE INFORMATION

Gene Name	IL10 interleukin 10 [<i>Macaca mulatta</i> (Rhesus monkey)]
Official Symbol	IL10
Synonyms	IL10 Protein, CSIF Protein, GVHDS Protein, IL-10 Protein, IL10A Protein, Interleukin-10 Protein, Interleukin 10 Protein, TGIF Protein
Gene ID	694931
mRNA Refseq	NM_001044727
Protein Refseq	NP_001038192
UniProt ID	P51496

 Tel: 1-631-559-9269 1-516-512-3133

 Email: info@creative-biomart.com  Fax: 1-631-938-8127

 45-1 Ramsey Road, Shirley, NY 11967, USA



 Tel: 1-631-559-9269 1-516-512-3133

 Email: info@creative-biomart.com  Fax: 1-631-938-8127

 45-1 Ramsey Road, Shirley, NY 11967, USA