

Recombinant Human IL10 protein, His-Avi-tagged

Cat. No. IL10-301H Lot. No. (See product label)

SPECIFICATION

Product Overview	Recombinant Human IL10 protein(P22301)(Ser19-Asn178), fused with N-terminal His and Avi tag, was expressed in HEK293.
Species	Human
Source	HEK293
ProteinLength	Ser19-Asn178
Tag	N-His-Avi
Form	Lyophilized from 0.22µm filtered solution in PBS (pH 7.4). Normally 5% trehalose is added as protectant before lyophilization.
Bio-activity	Immobilized Human IL-10, His Tag at 1ug/ml (100ul/well) on the plate. Dose response curve for Biotinylated Human IL-10R alpha, His Tag with the EC50 of 28.7ng/ml determined by ELISA.
Molecular Mass	The protein has a predicted MW of 21.3 kDa. Due to glycosylation, the protein migrates to 23-25 kDa based on Tris-Bis PAGE result.
Endotoxin	Less than 1EU per µg by the LAL method.
Purity	> 95% as determined by Tris-Bis PAGE;> 95% as determined by HPLC

 Tel: 1-631-559-9269 1-516-512-3133

 Email: info@creative-biomart.com  Fax: 1-631-938-8127

 45-1 Ramsey Road, Shirley, NY 11967, USA

Storage Reconstituted protein stable at -80°C for 12 months, 4°C for 1 week. Use a manual defrost freezer and avoid repeated freeze-thaw cycles.

Reconstitution Centrifuge tubes before opening. Reconstituting to a concentration more than 100 µg/ml is recommended. Dissolve the lyophilized protein in distilled water.

GENE INFORMATION

Gene Name [IL10 interleukin 10 \[Homo sapiens \]](#)

Official Symbol [IL10](#)

Synonyms IL10; interleukin 10; interleukin-10; CSIF; cytokine synthesis inhibitory factor; IL 10; IL10A; T cell growth inhibitory factor; TGIF; T-cell growth inhibitory factor; GVHDS; IL-10; MGC126450; MGC126451;

Gene ID [3586](#)

mRNA Refseq [NM_000572](#)

Protein Refseq [NP_000563](#)

MIM [124092](#)

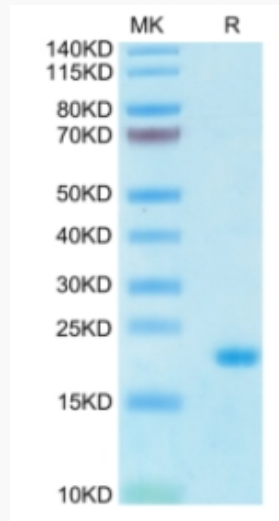
UniProt ID [P22301](#)

 Tel: 1-631-559-9269 1-516-512-3133

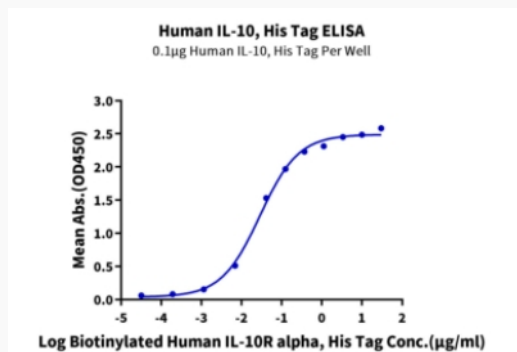
 Email: info@creative-biomart.com  Fax: 1-631-938-8127

 45-1 Ramsey Road, Shirley, NY 11967, USA

Tris-Bis PAGE



ELISA Data



 Tel: 1-631-559-9269 1-516-512-3133

 Email: info@creative-biomart.com  Fax: 1-631-938-8127

 45-1 Ramsey Road, Shirley, NY 11967, USA