

Recombinant Goat IL10 Protein, His-tagged

Cat. No. IL10-994G Lot. No. (See product label)

SPECIFICATION

Product Overview	Recombinant Goat IL10 Protein (Ser17-Met174) with His tag was expressed in E. coli.
Species	Goat
Source	E.coli
ProteinLength	Ser17-Met174
Description	This gene encodes an anti-inflammatory cytokine that is a member of the class-2 cytokine family. The encoded protein is secreted by cells of both the innate and adaptive immune systems and is crucial for limiting the immune response to a broad range of pathogens. It also has been shown to suppress autoimmune responses. This protein mediates it's immunosuppressive signal through a specific interleukin 10 receptor complex. Aberrant functioning of this gene is associated with numerous immune disorders including graft-versus-host disease, and increased susceptibility to HIV-1 infection and rheumatoid arthritis.
Form	Freeze-dried powder
Molecular Mass	Predicted Molecular Mass: 18.4 kDa; Accurate Molecular Mass: 22 kDa
Purity	> 97%
Applications	Positive Control; Immunogen; SDS-PAGE; WB.

 Tel: 1-631-559-9269 1-516-512-3133

 Email: info@creative-biomart.com  Fax: 1-631-938-8127

 45-1 Ramsey Road, Shirley, NY 11967, USA

Stability	The thermal stability is described by the loss rate. The loss rate was determined by accelerated thermal degradation test, that is, incubate the protein at 37 centigrade for 48h, and no obvious degradation and precipitation were observed. The loss rate is less than 5% within the expiration date under appropriate storage condition.
Storage	Avoid repeated freeze/thaw cycles. Store at 2-8 centigrade for one month. Aliquot and store at -80 centigrade for 12 months.
Storage Buffer	PBS, pH7.4, containing 0.01% SKL, 1mM DTT, 5% Trehalose and Proclin300.
Reconstitution	Reconstitute in 20mM Tris, 150mM NaCl (pH8.0) to a concentration of 0.1-1.0 mg/mL. Do not vortex.

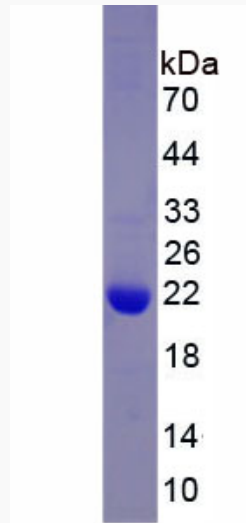
GENE INFORMATION

Gene Name	IL10 interleukin 10 [<i>Capra hircus</i> (goat)]
Official Symbol	IL10
Synonyms	IL10; interleukin 10;
Gene ID	100860746
mRNA Refseq	XM_005690416
Protein Refseq	XP_005690473
UniProt ID	A7Y3X5

 Tel: 1-631-559-9269 1-516-512-3133

 Email: info@creative-biomart.com  Fax: 1-631-938-8127

 45-1 Ramsey Road, Shirley, NY 11967, USA



Tel: 1-631-559-9269 1-516-512-3133

Email: info@creative-biomart.com Fax: 1-631-938-8127

45-1 Ramsey Road, Shirley, NY 11967, USA