

Recombinant Human Interleukin 10 Receptor, Alpha, Fc Chimera

Cat. No. IL10RA-492H **Lot. No.** (See product label)

SPECIFICATION

Product Overview Recombinant Human interleukin 10 receptor, alpha encoding the signal peptide of IL-10 receptor alpha chain was fused to the extracellular domain of human CD209L (aa 1-328), which was in turn fused to the Fc region of human IgG1 (aa 93-330). The chimeric protein was expressed in modified *human 293 cells*.

Species Human

Source HEK293

ProteinLength 1-328 a.a.

Description Interleukin 10 Receptor, Alpha, a member of the 'SIGN' family of C-type lectin receptors, is a type II membrane protein that is expressed on liver sinusoidal endothelial cells (LSEC), specialized capillary vessels that are involved in antigen presentation and hepatic immune surveillance. CD209L is also expressed by endothelial cells associated with lymph nodes and in the human lung on type II alveolar cells and endothelial cells.

Amino Acid Sequence HGTELPSPPSKLQVSKVPSSLSQEQSEQDAIYQNLTLKAAVGELSEKSKLQEIYQE
 LTQLKAAVGELPEKSKLQEIYQELTRLKAAVGELPEKSKLQEIYQELTRLKAAVGELP
 EKSKLQEIYQELTRLKAAVGELPEKSKLQEIYQELTELKAAVGELPEKSKLQEIYQELT
 QLKAAVGELPDQSKQQIYQELTDLKTAFERLCRHCPCDWTFFQGNCYFMSNSQR
 NWHDSVTACQEVRAQLVVIKTAEEQNFLQLQTSRSNRFSWGLSDLNQEQTWQW

 Tel: 1-631-559-9269 1-516-512-3133

 Email: info@creative-biomart.com  Fax: 1-631-938-8127

 45-1 Ramsey Road, Shirley, NY 11967, USA



VDGSPLSPSFQRYWNSGEPNNSGNEDCAEFSGSGWWDNRCDVDNYWICKKPAAC
 FRDGIPKVDKKVEPKSCDKTHTCPPCPAPPELLGGPSVFLFPPKPKDTLMISRTPEVT
 CVVVDVSHEDPEVKFNWYVDGVEVHNAKTKPREEQYNSTYRVVSVLTVLHQDWLN
 GKEYKCRVSNKALPAPIEKTISKAKGQPREPQVYTLPPSRDELTKNQVSLTCLVKGF
 YPSDIAVEWESNGQPENNYKTTTPVLDSGDSFFLYSKLTVDKSRWQQGNVFCSCV
 MHEALHNHYTQKSLSLSPGK.

Molecular Mass

Interleukin 10 Receptor, Alpha Chimera migrates as a broad band between 70 and 85 kDa in SDS-PAGE due to post-translation modifications, in particular glycosylation.

pI

Interleukin 10 Receptor, Alpha Chimera separates into a number of isoforms in 2D PAGE due to post-translational modifications, in particular glycosylation. The pI range is between 5.4 and 6.5.

% Carbohydrate

Interleukin 10 Receptor, Alpha Chimera consists of 5-25% carbohydrate by weight.

Glycosylation

Interleukin 10 Receptor, Alpha Chimera has N-linked and may have O-linked oligosaccharides.

Purity

>95%, as determined by SDS-PAGE and visualized by silver stain.

Formulation

The product is supplied as a 200ug/ml solution in sterile phosphate-buffered saline.

Storage

Short-term storage at 4°C is recommended, and longer-term storage of aliquots at -18 to -20°C. Repeated freeze thawing is not recommended.

GENE INFORMATION

Gene Name

IL10RA interleukin 10 receptor, alpha [Homo sapiens]

Synonyms

IL10RA; interleukin 10 receptor, alpha; IL10R; CDW210A; HIL-10R; IL-

Tel: 1-631-559-9269 1-516-512-3133

Email: info@creative-biomart.com Fax: 1-631-938-8127

45-1 Ramsey Road, Shirley, NY 11967, USA

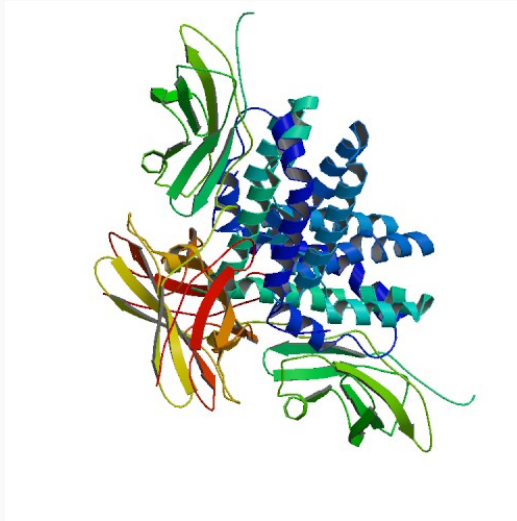
	10R1;Interleukin-10 receptor alpha chain;IL-10R-A; interleukin 10 receptor, alpha; CDw210a antigen
Gene ID	3587
mRNA Refseq	NM_001558
Protein Refseq	NP_001549
UniProt ID	Q13651
Chromosome Location	11q23
MIM	146933
Pathway	Cytokine-cytokine receptor interaction; Jak-STAT signaling pathway
Function	interleukin-10 receptor activity; protein binding; receptor activity

 Tel: 1-631-559-9269 1-516-512-3133

 Email: info@creative-biomart.com  Fax: 1-631-938-8127

 45-1 Ramsey Road, Shirley, NY 11967, USA

PDB rendering based
on 1j7v.



 Tel: 1-631-559-9269 1-516-512-3133

 Email: info@creative-biomart.com  Fax: 1-631-938-8127

 45-1 Ramsey Road, Shirley, NY 11967, USA