

Recombinant Human IL10RA protein, His-Avi-tagged

Cat. No. IL10RA-6744H Lot. No. (See product label)

SPECIFICATION

Product Overview	Recombinant Human IL10RA protein(Q13651)(His22-Asn235), fused with C-terminal His and Avi tag, was expressed in HEK293.
Species	Human
Source	HEK293
ProteinLength	His22-Asn235
Tag	C-His-Avi
Form	Lyophilized from 0.22µm filtered solution in PBS (pH 7.4). Normally 5% trehalose is added as protectant before lyophilization.
Bio-activity	Immobilized Human IL-10, No Tag at 2ug/ml (100ul/well) on the plate. Dose response curve for Human IL-10 R alpha, His Tag with the EC50 of 48.4ng/ml determined by ELISA (QC Test).
Molecular Mass	The protein has a predicted MW of 27 kDa. Due to glycosylation, the protein migrates to 40-48 kDa based on Tris-Bis PAGE result.
Endotoxin	Less than 1EU per µg by the LAL method.
Purity	> 95% as determined by Tris-Bis PAGE;> 95% as determined by HPLC

 Tel: 1-631-559-9269 1-516-512-3133

 Email: info@creative-biomart.com  Fax: 1-631-938-8127

 45-1 Ramsey Road, Shirley, NY 11967, USA

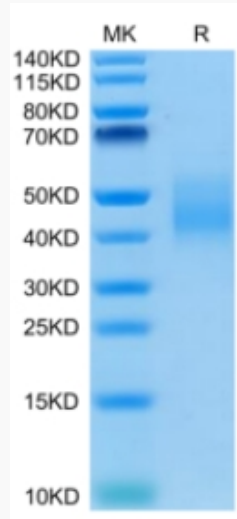
Storage	Reconstituted protein stable at -80°C for 12 months, 4°C for 1 week. Use a manual defrost freezer and avoid repeated freeze-thaw cycles.
Reconstitution	Centrifuge tubes before opening. Reconstituting to a concentration more than 100 µg/ml is recommended. Dissolve the lyophilized protein in distilled water.
GENE INFORMATION	
Gene Name	IL10RA interleukin 10 receptor, alpha [Homo sapiens]
Official Symbol	IL10RA
Synonyms	IL10RA; interleukin 10 receptor, alpha; IL10R; interleukin-10 receptor subunit alpha; CD210; CD210a; CDW210A; HIL 10R; IL-10RA; IL-10R subunit 1; IL-10R subunit alpha; IL-10 receptor subunit alpha; interleukin-10 receptor subunit 1; interleukin-10 receptor alpha chain; HIL-10R; IL-10R1;
Gene ID	3587
mRNA Refseq	NM_001558
Protein Refseq	NP_001549
MIM	146933
UniProt ID	Q13651

 Tel: 1-631-559-9269 1-516-512-3133

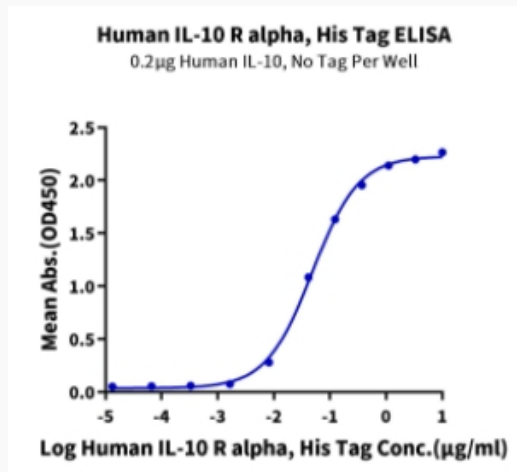
 Email: info@creative-biomart.com  Fax: 1-631-938-8127

 45-1 Ramsey Road, Shirley, NY 11967, USA

Tris-Bis PAGE



ELISA Data



Tel: 1-631-559-9269 1-516-512-3133

Email: info@creative-biomart.com Fax: 1-631-938-8127

45-1 Ramsey Road, Shirley, NY 11967, USA