

## Recombinant Human IL10RA protein, hFc-Myc-tagged

Cat. No. IL10RA-8675H Lot. No. (See product label)

### SPECIFICATION

<b>Product Overview</b>	Recombinant Human IL10RA protein(Q13651)(22-235aa), fused with C-terminal hFc and Myc tag, was expressed in HEK293.
<b>Species</b>	Human
<b>Source</b>	HEK293
<b>ProteinLength</b>	22-235aa
<b>Tag</b>	C-hFc-Myc
<b>Form</b>	If the delivery form is liquid, the default storage buffer is Tris/PBS-based buffer, 5%-50% glycerol. If the delivery form is lyophilized powder, the buffer before lyophilization is Tris/PBS-based buffer, 6% Trehalose, pH 8.0.
<b>Molecular Mass</b>	53.3 kDa
<b>Purity</b>	Greater than 90% as determined by SDS-PAGE. Greater than 90% as determined by SEC-HPLC.
<b>Storage</b>	Store at -20°C/-80°C upon receipt, aliquoting is necessary for mutiple use. Avoid repeated freeze-thaw cycles.
<b>Reconstitution</b>	We recommend that this vial be briefly centrifuged prior to opening to bring the contents to the bottom. Please reconstitute protein in deionized sterile water to a

 Tel: 1-631-559-9269 1-516-512-3133

 Email: [info@creative-biomart.com](mailto:info@creative-biomart.com)  Fax: 1-631-938-8127

 45-1 Ramsey Road, Shirley, NY 11967, USA

concentration of 0.1-1.0 mg/mL. We recommend to add 5-50% of glycerol (final concentration) and aliquot for long-term storage at -20°C/-80°C.

**AA Sequence**

HGTELPSPPSVWFEAFFHHILHWTPIPNQSESTCYEVALLRYGIESWNSISNCSQTL  
 SYDLTAVTLDLYHSNGYRARVRAVDGSRHSNWTVTNTRFSVDEVTLTVGSVNLEIH  
 NGFILGKIQLPRPKMAPANDTYESIFSHFREYEIAIRKVPGNFTFTHKKVKHENFSLLT  
 SGEVGEFCVQVKPSVASRSNKG MWSKEECISLTRQYFTVTN

## GENE INFORMATION

**Gene Name** [IL10RA interleukin 10 receptor, alpha \[ Homo sapiens \]](#)

**Official Symbol** [IL10RA](#)

**Synonyms**

IL10RA; interleukin 10 receptor, alpha; IL10R; interleukin-10 receptor subunit alpha; CD210; CD210a; CDW210A; HIL 10R; IL-10RA; IL-10R subunit 1; IL-10R subunit alpha; IL-10 receptor subunit alpha; interleukin-10 receptor subunit 1; interleukin-10 receptor alpha chain; HIL-10R; IL-10R1;

**Gene ID** [3587](#)

**mRNA Refseq** [NM\\_001558](#)

**Protein Refseq** [NP\\_001549](#)

**MIM** [146933](#)

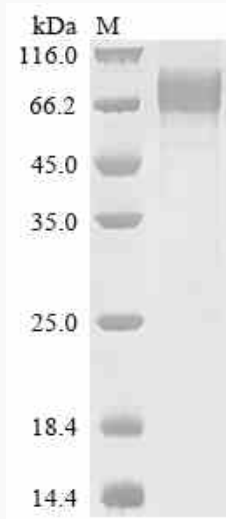
**UniProt ID** [Q13651](#)

 Tel: 1-631-559-9269 1-516-512-3133

 Email: [info@creative-biomart.com](mailto:info@creative-biomart.com)  Fax: 1-631-938-8127

 45-1 Ramsey Road, Shirley, NY 11967, USA

**SDS-PAGE**



 Tel: 1-631-559-9269 1-516-512-3133

 Email: [info@creative-biomart.com](mailto:info@creative-biomart.com)  Fax: 1-631-938-8127

 45-1 Ramsey Road, Shirley, NY 11967, USA