

## Active Recombinant Human IL10RB protein, His&hFc-tagged

Cat. No. IL10RB-176H Lot. No. (See product label)

### SPECIFICATION

<b>Product Overview</b>	Active Recombinant Human IL10RB protein(Met 1-Ser 220)(NP_000619.3) was expressed in HEK293, fused with the C-terminal polyhistidine-tagged Fc region of human IgG1 at the C-terminus.
<b>Species</b>	Human
<b>Source</b>	HEK293
<b>ProteinLength</b>	1-220 aa
<b>Form</b>	Lyophilized from sterile PBS, pH 7.4.
<b>Bio-activity</b>	Measured by its binding ability in a functional ELISA. Immobilized human IL28B at 20 µg/ml (100 µl/well) can bind human IL10RB-Fc with a linear ranger of 3.125-25 µg/ml.
<b>Molecular Mass</b>	The recombinant human IL10Rβ/Fc is a disulfide-linked homodimer. The reduced monomer consists of 449 amino acids and has a predicted molecular mass of 51.7 kDa. In SDS-PAGE under reducing conditions, the apparent molecular mass of rhIL10Rβ/Fc monomer is apximately 75-85 kDa due to glycosylation.
<b>Endotoxin</b>	< 1.0 EU per µg of the protein as determined by the LAL method.
<b>Purity</b>	> 92 % as determined by SDS-PAGE
<b>Storage</b>	Store it under sterile conditions at -20°C to -80°C upon receiving. Recommend to

 Tel: 1-631-559-9269 1-516-512-3133

 Email: [info@creative-biomart.com](mailto:info@creative-biomart.com)  Fax: 1-631-938-8127

 45-1 Ramsey Road, Shirley, NY 11967, USA

aliquot the protein into smaller quantities for optimal storage. Avoid repeated freeze-thaw cycles.

**Reconstitution**

It is recommended that sterile water be added to the vial to prepare a stock solution of 0.2 ug/ul. Centrifuge the vial at 4°C before opening to recover the entire contents.

**protein Refseq-Weblink**

[http://www.ncbi.nlm.nih.gov/protein/NP\\_000619.3](http://www.ncbi.nlm.nih.gov/protein/NP_000619.3)

**Unit ID**

Q08334

**Unit ID-Weblink**

<http://www.uniprot.org/uniprot/Q08334>

## GENE INFORMATION

**Gene Name**

IL10RB interleukin 10 receptor, beta [ Homo sapiens ]

**Official Symbol**

IL10RB

**Synonyms**

IL10RB; interleukin 10 receptor, beta; CRFB4, D21S58, D21S66; interleukin-10 receptor subunit beta; CDW210B; CRF2 4; IL 10R2; IL-10RB; IL-10R subunit 2; IL-10R subunit beta; IL-10 receptor subunit beta; cytokine receptor class-II CRF2-4; interleukin-10 receptor subunit 2; cytokine receptor class-II member 4; cytokine receptor family 2 member 4; cytokine receptor family II, member 4; CRFB4; CRF2-4; D21S58; D21S66; IL-10R2;

**Gene ID**

3588

**mRNA Refseq**

NM\_000628

**protein Refseq**

NP\_000619

 Tel: 1-631-559-9269 1-516-512-3133

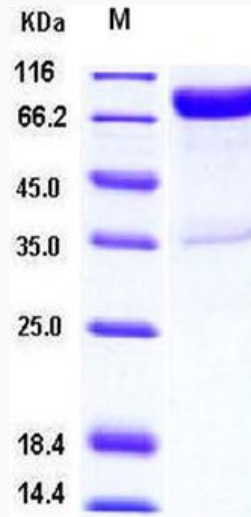
 Email: [info@creative-biomart.com](mailto:info@creative-biomart.com)  Fax: 1-631-938-8127

 45-1 Ramsey Road, Shirley, NY 11967, USA

MIM

123889

SDS-PAGE



 Tel: 1-631-559-9269 1-516-512-3133

 Email: [info@creative-biomart.com](mailto:info@creative-biomart.com)  Fax: 1-631-938-8127

 45-1 Ramsey Road, Shirley, NY 11967, USA