

## Recombinant Human IL10RB Protein, Met20-Ser220, C-Fc tagged

Cat. No. IL10RB-202H Lot. No. (See product label)

### SPECIFICATION

<b>Product Overview</b>	Recombinant Human IL-10 R beta Protein (Met20-Ser220) with Human IgG1 (Pro100-Lys330) Fc tag at C-terminus was expressed in Chinese Hamster Ovary cell line.
<b>Species</b>	Human
<b>Source</b>	CHO
<b>ProteinLength</b>	20-220 a.a.
<b>Description</b>	<p>The protein encoded by this gene belongs to the cytokine receptor family. It is an accessory chain essential for the active interleukin 10 receptor complex.</p> <p>Coexpression of this and IL10RA proteins has been shown to be required for IL10-induced signal transduction. This gene and three other interferon receptor genes, IFAR2, IFNAR1, and IFNGR2, form a class II cytokine receptor gene cluster located in a small region on chromosome 21.</p>
<b>Form</b>	Disulfide-linked homodimer
<b>Bio-activity</b>	Measured by its binding ability in a functional ELISA. Recombinant Human IL-10 R beta Fc Chimera binds Recombinant Human IL-28 R alpha/IFN-lambda R1 Fc Chimera in the presence of Recombinant Human IL-28B/IFN-lambda 3 with an ED50 of 0.250-3.00 µg/mL.

 Tel: 1-631-559-9269 1-516-512-3133

 Email: [info@creative-biomart.com](mailto:info@creative-biomart.com)  Fax: 1-631-938-8127

 45-1 Ramsey Road, Shirley, NY 11967, USA

<b>Molecular Mass</b>	Predicted Molecular Mass: 50 kDa SDS-PAGE: 72-82 kDa, under reducing conditions.
<b>Endotoxin</b>	< 0.10 EU/μg of the protein by the LAL method.
<b>Purity</b>	> 95%, by SDS-PAGE visualized with Silver Staining and quantitative densitometry by Coomassie Blue Staining.
<b>N-terminal Sequence Analysis</b>	Met20
<b>Storage</b>	Use a manual defrost freezer and avoid repeated freeze-thaw cycles. 12 months from date of receipt, -20 to -70 centigrade as supplied. 1 month, 2 to 8 centigrade under sterile conditions after reconstitution. 3 months, -20 to -70 centigrade under sterile conditions after reconstitution.
<b>Storage Buffer</b>	Lyophilized from a 0.2 μm filtered solution in PBS.
<b>Shipping</b>	The product is shipped at ambient temperature.
<b>Reconstitution</b>	Reconstitute at 500 μg/mL in PBS.
<b>References</b>	<ol style="list-style-type: none"> <li>1. Commins, S. et al. (2008) J. Allergy Clin. Immunol. 121:1108.</li> <li>2. Pestka, S. et al. (2004) Annu. Rev. Immunol. 22:929.</li> <li>3. Kotenko, S.V. et al. (1997) EMBO J. 16:5894.</li> </ol>

## GENE INFORMATION

<b>Gene Name</b>	IL10RB interleukin 10 receptor, beta [ Homo sapiens (human) ]
<b>Official Symbol</b>	IL10RB

 Tel: 1-631-559-9269 1-516-512-3133

 Email: [info@creative-biomart.com](mailto:info@creative-biomart.com)  Fax: 1-631-938-8127

 45-1 Ramsey Road, Shirley, NY 11967, USA

**Synonyms**

IL10RB; interleukin 10 receptor, beta; CRFB4, D21S58, D21S66; interleukin-10 receptor subunit beta; CDW210B; CRF2 4; IL 10R2; IL-10RB; IL-10R subunit 2; IL-10R subunit beta; IL-10 receptor subunit beta; cytokine receptor class-II CRF2-4; interleukin-10 receptor subunit 2; cytokine receptor class-II member 4; cytokine receptor family 2 member 4; cytokine receptor family II, member 4; CRFB4; CRF2-4; D21S58; D21S66; IL-10R2

**Gene ID**

3588

**mRNA Refseq**

NM\_000628

**Protein Refseq**

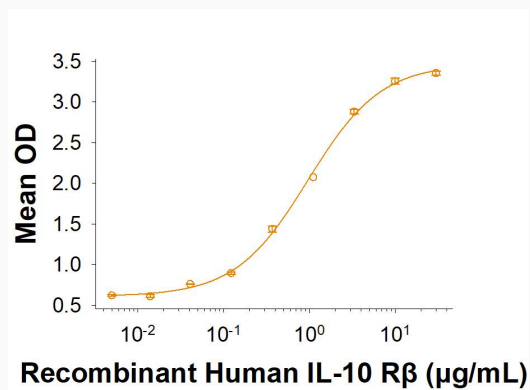
NP\_000619

**MIM**

123889

**UniProt ID**

Q08334

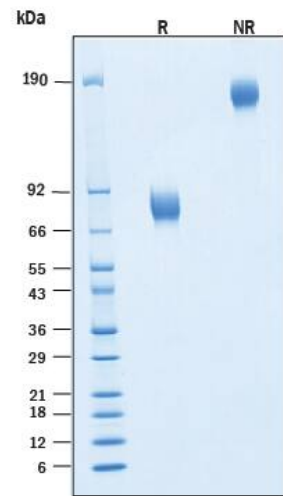
**Binding Activity**


 Tel: 1-631-559-9269 1-516-512-3133

 Email: [info@creative-biomart.com](mailto:info@creative-biomart.com)  Fax: 1-631-938-8127

 45-1 Ramsey Road, Shirley, NY 11967, USA

**SDS-PAGE**



 Tel: 1-631-559-9269 1-516-512-3133

 Email: [info@creative-biomart.com](mailto:info@creative-biomart.com)  Fax: 1-631-938-8127

 45-1 Ramsey Road, Shirley, NY 11967, USA