

Recombinant Human IL10RB Protein, hlgG-His-tagged

Cat. No. IL10RB-217H Lot. No. (See product label)

SPECIFICATION

Product Overview	Recombinant Human IL10RB(113-201aa) fused with hlgG-His tag at C-terminal was expressed in Insect cells.
Species	Human
Source	Insect Cells
ProteinLength	20-220aa
Description	IL10RB, also known as interleukin-10 receptor subunit beta, is a transmembrane glycoprotein that functions as a co-receptor for several class 2 cytokines including Interleukins-10, -22, -26, -28A/IFN-lambda 2, -28B/IFN-lambda 3, and -29/IFN-lambda. Co-expression of this and IL10RA proteins has been shown to be required for IL10-induced signal transduction.
Form	Liquid. In Phosphate Buffered Saline (pH 7.4) containing 10% glycerol.
Molecular Mass	50.5kDa (440aa) 50-70KDa (SDS-PAGE under reducing conditions.)
AA Sequence	MVPPPENVRM NSVNFKNILQ WESPAFAKGN LTFTAQYLSY RIFQDKCMNT TLTECDFSSL SKYGDHTLRV RAEFADEHSD WVNITFCPVD DTIIGPPGMQ VEVLADSLHM RFLAPKIENE YETWTMKNVY NSWTYNVQYW KNGTDEKFQI TPQYDFEVLN NLEPWTTYCV QVRGFLPDRN KAGEWSEPMC EQTTHDETVP SLEPKSCDKT HTCPPCPAPE LLGGPSVFLF PPKPKDTLMI SRTPEVTCVV VDVSHEDPEV KFNWYVDGVE

 Tel: 1-631-559-9269 1-516-512-3133

 Email: info@creative-biomart.com  Fax: 1-631-938-8127

 45-1 Ramsey Road, Shirley, NY 11967, USA

VHNAKTKPRE EQYNSTYRVV SVLTVLHQDW LNGKEYKCKV SNKALPAPIE
 KTISKAKGQP REPQVYTLPP SRDELTKNQV SLTCLVKGFY
 PSDIAVEWES NGQPENNYKT TPPVLDSGGS FFLYSKLTVD KSRWQQGNVF
 SCSVMHEALH NHYTQKSLSL SPGKHHHHHHH

Purity > 95% by SDS - PAGE

Applications SDS-PAGE

Storage Can be stored at +4 centigrade short term (1-2 weeks). For long term storage, aliquot and store at -20 centigrade or -70 centigrade. Avoid repeated freezing and thawing cycles.

Concentration 1mg/ml (determined by Absorbance at 280nm)

GENE INFORMATION

Gene Name [IL10RB interleukin 10 receptor, beta \[Homo sapiens \]](#)

Official Symbol [IL10RB](#)

Synonyms IL10RB; interleukin 10 receptor, beta; CRFB4, D21S58, D21S66; interleukin-10 receptor subunit beta; CDW210B; CRF2 4; IL 10R2; IL-10RB; IL-10R subunit 2; IL-10R subunit beta; IL-10 receptor subunit beta; cytokine receptor class-II CRF2-4; interleukin-10 receptor subunit 2; cytokine receptor class-II member 4; cytokine receptor family 2 member 4; cytokine receptor family II, member 4; CRFB4; CRF2-4; D21S58; D21S66; IL-10R2;

Gene ID [3588](#)

mRNA Refseq [NM_000628](#)

 Tel: 1-631-559-9269 1-516-512-3133

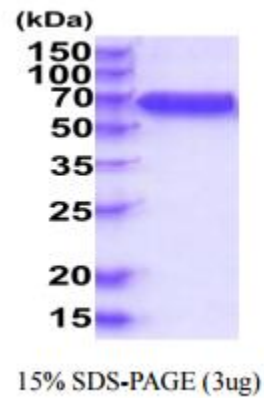
 Email: info@creative-biomart.com  Fax: 1-631-938-8127

 45-1 Ramsey Road, Shirley, NY 11967, USA

Protein Refseq NP_000619

MIM 123889

UniProt ID Q08334



 Tel: 1-631-559-9269 1-516-512-3133

 Email: info@creative-biomart.com  Fax: 1-631-938-8127

 45-1 Ramsey Road, Shirley, NY 11967, USA