

Recombinant Human IL10RB protein, His-tagged

Cat. No. IL10RB-2251H Lot. No. (See product label)

SPECIFICATION

Product Overview	Recombinant Human IL10RB protein(NP_000619.3) (Met 1-Ser 220) was expressed in HEK293, fused with a polyhistidine tag at the C-terminus.
Species	Human
Source	HEK293
ProteinLength	1-220 aa
Form	Lyophilized from sterile PBS, pH 7.4.
Molecular Mass	The recombinant human IL10R β comprises 212 amino acids and has a predicted molecular mass of 25 kDa. In SDS-PAGE under reducing conditions, the apparent molecular mass of rhIL10R β is approximately 45-48 kDa due to glycosylation.
Endotoxin	< 1.0 EU per μ g of the protein as determined by the LAL method.
Purity	> 92 % as determined by SDS-PAGE
Storage	Store it under sterile conditions at -20°C to -80°C upon receiving. Recommend to aliquot the protein into smaller quantities for optimal storage. Avoid repeated freeze-thaw cycles.
Reconstitution	It is recommended that sterile water be added to the vial to prepare a stock solution of 0.2 ug/ul. Centrifuge the vial at 4°C before opening to recover the entire contents.

 Tel: 1-631-559-9269 1-516-512-3133

 Email: info@creative-biomart.com  Fax: 1-631-938-8127

 45-1 Ramsey Road, Shirley, NY 11967, USA

protein Refseq-Weblink http://www.ncbi.nlm.nih.gov/protein/NP_000619.3

Unit ID Q08334

Unit ID-Weblink <http://www.uniprot.org/uniprot/Q08334>

GENE INFORMATION

Gene Name [IL10RB interleukin 10 receptor, beta \[Homo sapiens \]](#)

Official Symbol [IL10RB](#)

Synonyms IL10RB; interleukin 10 receptor, beta; CRFB4, D21S58, D21S66; interleukin-10 receptor subunit beta; CDW210B; CRF2 4; IL 10R2; IL-10RB; IL-10R subunit 2; IL-10R subunit beta; IL-10 receptor subunit beta; cytokine receptor class-II CRF2-4; interleukin-10 receptor subunit 2; cytokine receptor class-II member 4; cytokine receptor family 2 member 4; cytokine receptor family II, member 4; CRFB4; CRF2-4; D21S58; D21S66; IL-10R2;

Gene ID [3588](#)

mRNA Refseq [NM_000628](#)

protein Refseq [NP_000619](#)

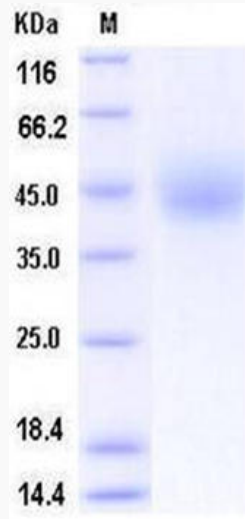
MIM [123889](#)

 Tel: 1-631-559-9269 1-516-512-3133

 Email: info@creative-biomart.com  Fax: 1-631-938-8127

 45-1 Ramsey Road, Shirley, NY 11967, USA

SDS-PAGE



 Tel: 1-631-559-9269 1-516-512-3133

 Email: info@creative-biomart.com  Fax: 1-631-938-8127

 45-1 Ramsey Road, Shirley, NY 11967, USA