

# Recombinant Human IL10RB Protein, His (Fc)-Avi tagged, Biotinylated

Cat. No. IL10RB-4431H Lot. No. (See product label)

## SPECIFICATION

### Product Overview

Biotinylated Recombinant Human IL10RB Protein with His (Fc)-Avi tag was expressed in HEK293.

### Species

Human

### Source

HEK293

### Description

The protein encoded by this gene belongs to the cytokine receptor family. It is an accessory chain essential for the active interleukin 10 receptor complex. Coexpression of this and IL10RA proteins has been shown to be required for IL10-induced signal transduction. This gene and three other interferon receptor genes, IFAR2, IFNAR1, and IFNGR2, form a class II cytokine receptor gene cluster located in a small region on chromosome 21.

### Molecular Mass

The protein has a calculated MW of 50 kDa.

### AA Sequence

MVPPPENVRMNSVNFKNILQWESPAFAKGNLTFTAQYLSYRIFQDKCMNTTLTECD  
 FSSLSKYGDHTLRVRAEFADEHSDWVNITFCPVDDTIIGPPGMQVEVLADSLHMRFL  
 APKIENEYETWTMKNVYNSWTYNVQYWKNGTDEKFQITPQYDFEVLRLNLEPWTTY  
 CVQVRGFLPDRNKAGEWSEPVCEQTTHDETVPSPKSCDKTHTCPPCPAPELLGGP  
 SVFLFPPKPKDTLMISRTPEVTCVVVDVSHEDPEVKFNWYVDGVEVHNAKTKPREE  
 QYNSTYRVVSVLTVLHQDWLNGKEYKCKVSNKALPAPIEKTISKAKGQPREPQVYTL  
 PPSRDELTKNQVSLTCLVKGFYPSDIAVEWESNGQPENNYKTTTPVLDSDGSFFLY

 Tel: 1-631-559-9269 1-516-512-3133

 Email: [info@creative-biomart.com](mailto:info@creative-biomart.com)  Fax: 1-631-938-8127

 45-1 Ramsey Road, Shirley, NY 11967, USA

	SKLTVDKSRWQQGNVFSCSVMHEALHNHYTQKSLSLSPGKHHHHHH
<b>Endotoxin</b>	< 1 EU/μg by LAL
<b>Purity</b>	> 85% by SDS-PAGE
<b>Storage</b>	Store it under sterile conditions at -20 to -80 centigrade. It is recommended that the protein be aliquoted for optimal storage. Avoid repeated freeze-thaw cycles.
<b>Concentration</b>	0.323 mg/mL by BCA
<b>Storage Buffer</b>	Sterile PBS, pH 7.4
<b>Conjugation</b>	Biotin
<b>GENE INFORMATION</b>	
<b>Gene Name</b>	IL10RB interleukin 10 receptor, beta [ Homo sapiens ]
<b>Official Symbol</b>	IL10RB
<b>Synonyms</b>	IL10RB; interleukin 10 receptor, beta; CRFB4, D21S58, D21S66; interleukin-10 receptor subunit beta; CDW210B; CRF2 4; IL 10R2; IL-10RB; IL-10R subunit 2; IL-10R subunit beta; IL-10 receptor subunit beta; cytokine receptor class-II CRF2-4; interleukin-10 receptor subunit 2; cytokine receptor class-II member 4; cytokine receptor family 2 member 4; cytokine receptor family II, member 4; CRFB4; CRF2-4; D21S58; D21S66; IL-10R2;
<b>Gene ID</b>	3588
<b>mRNA Refseq</b>	NM_000628

 Tel: 1-631-559-9269 1-516-512-3133

 Email: [info@creative-biomart.com](mailto:info@creative-biomart.com)  Fax: 1-631-938-8127

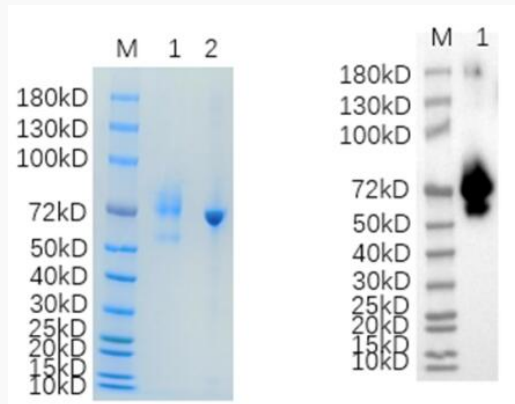
 45-1 Ramsey Road, Shirley, NY 11967, USA

**Protein Refseq** NP\_000619

**MIM** 123889

**UniProt ID** Q08334

**Reducing 12% SDS-PAGE (CBB stained) and WB (Anti-His Mouse Monoclonal antibody) analysis profiles of purified IL10RB.**



1. IL10RB-4431H  
2. BSA

 Tel: 1-631-559-9269 1-516-512-3133

 Email: [info@creative-biomart.com](mailto:info@creative-biomart.com)  Fax: 1-631-938-8127

 45-1 Ramsey Road, Shirley, NY 11967, USA