

## Recombinant Human IL11 Protein (Met1-Leu199), C-His tagged

Cat. No. IL11-4299H Lot. No. (See product label)

### SPECIFICATION

<b>Product Overview</b>	Recombinant human IL11 (Met1-Leu199) fused with the C-terminal His tag was expressed in Mammalian cells.
<b>Species</b>	Human
<b>Source</b>	Mammalian Cells
<b>ProteinLength</b>	Met1-Leu199
<b>Form</b>	Lyophilized powder/frozen liquid
<b>Molecular Mass</b>	21.89 kDa
<b>Endotoxin</b>	< 1.0 EU/μg of the protein as determined by the LAL method.
<b>Purity</b>	>90% as determined by SDS-PAGE.
<b>Notes</b>	For research use only.
<b>Storage</b>	Use a manual defrost freezer and avoid repeated freeze thaw cycles. Store at 2 to 8 centigrade for one week. Store at -20 to -80 centigrade for twelve months from the date of receipt.
<b>Storage Buffer</b>	Supplied as solution form in PBS or lyophilized from PBS.

 Tel: 1-631-559-9269 1-516-512-3133

 Email: [info@creative-biomart.com](mailto:info@creative-biomart.com)  Fax: 1-631-938-8127

 45-1 Ramsey Road, Shirley, NY 11967, USA

**Reconstitution** Reconstitute in sterile water for a stock solution.

**Shipping** They are shipped out with dry ice/blue ice unless customers require otherwise.

## GENE INFORMATION

**Gene Name** IL11 interleukin 11 [ Homo sapiens (human) ]

**Official Symbol** IL11

**Synonyms** IL11; interleukin 11; interleukin-11; adipogenesis inhibitory factor; AGIF; IL 11; oprelvekin; IL-11;

**Gene ID** 3589

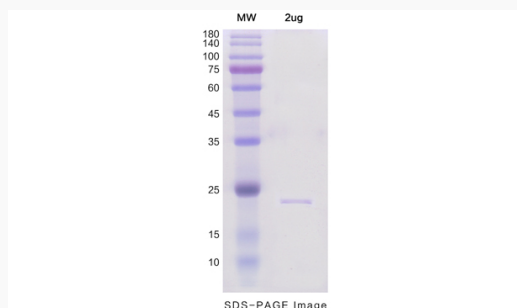
**mRNA Refseq** NM\_000641

**Protein Refseq** NP\_000632

**MIM** 147681

**UniProt ID** P20809

### SDS-PAGE



 Tel: 1-631-559-9269 1-516-512-3133

 Email: [info@creative-biomart.com](mailto:info@creative-biomart.com)  Fax: 1-631-938-8127

 45-1 Ramsey Road, Shirley, NY 11967, USA