

Recombinant Human IL12 Protein, His-tagged

Cat. No. IL12-12H Lot. No. (See product label)

SPECIFICATION

Product Overview	Recombinant Human IL12 Protein with His tag was expressed in HEK293.
Species	Human
Source	HEK293
Description	<p>This gene encodes a subunit of a cytokine that acts on T and natural killer cells, and has a broad array of biological activities. The cytokine is a disulfide-linked heterodimer composed of the 35-kD subunit encoded by this gene, and a 40-kD subunit that is a member of the cytokine receptor family. This cytokine is required for the T-cell-independent induction of interferon (IFN)-gamma, and is important for the differentiation of both Th1 and Th2 cells. The responses of lymphocytes to this cytokine are mediated by the activator of transcription protein STAT4. Nitric oxide synthase 2A (NOS2A/NOS2) is found to be required for the signaling process of this cytokine in innate immunity.</p>
Form	Liquid
AA Sequence	<p>Alpha-chainRNLPVATPDPGMFPCLHHSQNLLRAVSNMLQKARQTLEFYPTCTSEEID HEDITKDKTSTVEACLPLELTKNESCLNSRETSFITNGSCLASRKTSFMMALCLSSIYE DLKMYQVEFKTMNAKLLMDPKRQIFLDQNMLAVIDELMQALNFNSETVPQKSSLEEP DFYKTKIKLCILLHAFRIRAVTIDRVMSYLNASGGGGSHHHHHH</p> <p>Beta-chain IWELKKDVYVVELDWYPDAPGEMVVLTCDTPEEDGITWTLDSSEVLGSGKTLTIQV</p>

 Tel: 1-631-559-9269 1-516-512-3133

 Email: info@creative-biomart.com  Fax: 1-631-938-8127

 45-1 Ramsey Road, Shirley, NY 11967, USA

KEFGDAGQYTCHKGGEVLSHSLLLLHKKEDGIWSTDILKDQKEPKNKTFLRCEAKNY
 SGRFTCWWLTTISTDLTFSVKSSRGSSDPQGVTCGAATLSAERVRGDNKEYEYSVE
 CQEDSACPAAEESLPIEVMVDAVHKLKYENYTSSFFIRDIIKPDPPKNLQLKPLKNSR
 QVEVSWEYPDTWSTPHSYFSLTFCVQVQGKSKREKKDRVFTDKTSATVICRKNASI
 SVRAQDRYYSSSWSEWASVPCS

Purity > 90% determined by SDS-PAGE (Reduced)

Storage Store at -20 to -80 centigrade.

Storage Buffer PBS, pH 6.8

GENE INFORMATION

Gene Name [IL12A interleukin 12A \[Homo sapiens \(human\) \]](#)

Official Symbol [IL12A](#)

Synonyms

IL12A; interleukin 12A; P35; CLMF; NFSK; NKSF1; IL-12A; interleukin-12 subunit alpha; CLMF p35; IL-12, subunit p35; IL35 subunit; NF cell stimulatory factor chain 1; NK cell stimulatory factor chain 1; cytotoxic lymphocyte maturation factor 1, p35; cytotoxic lymphocyte maturation factor 35 kDa subunit; interleukin 12, p35; interleukin 12A (natural killer cell stimulatory factor 1, cytotoxic lymphocyte maturation factor 1, p35); interleukin-12 alpha chain

Gene ID [3592](#)

mRNA Refseq [NM_000882](#)

Protein Refseq [NP_000873](#)

 Tel: 1-631-559-9269 1-516-512-3133

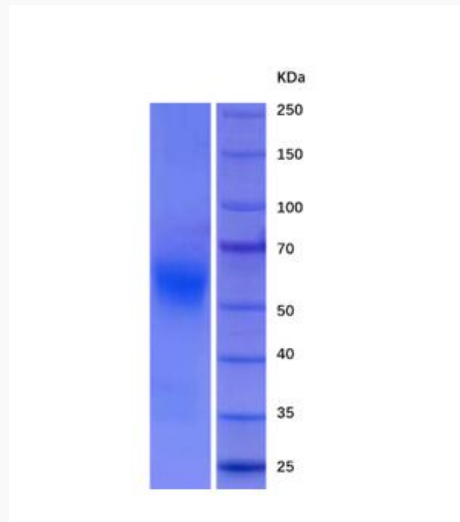
 Email: info@creative-biomart.com  Fax: 1-631-938-8127

 45-1 Ramsey Road, Shirley, NY 11967, USA

MIM 161560

UniProt ID P29459

SDS-PAGE



 Tel: 1-631-559-9269 1-516-512-3133

 Email: info@creative-biomart.com  Fax: 1-631-938-8127

 45-1 Ramsey Road, Shirley, NY 11967, USA