

Recombinant Human IL12A&IL12B heterodimer protein

Cat. No. IL12-4327H Lot. No. (See product label)

SPECIFICATION

Product Overview	Recombinant Human IL12A&IL12B heterodimer protein was expressed in CHO.
Species	Human
Source	CHO
Form	Liquid in sterile 50mM PB, 300mM NaCl, pH7.0.
Bio-activity	Measured by its ability to enhance IFN-gamma secretion in NK-92 human natural killer lymphoma cells. The ED50 for this effect is 3.486ng/ml.
Molecular Mass	The protein has a calculated MW of 56.9 kDa.
AA Sequence	<p>p35 Subunit: RNLPVATPDPGMFPCLHHSQNLLRAVSNMLQKARQTLEFYPTSEEID HEDITKDKTSTVEACLPLELTKNESCLNSRETSFITNGSCLASRKTSFMMALCLSSIYE DLKMYQVEFKTMNAKLLMDPKRQIFLDQNMLAVIDELMQALNFNSETVPQKSSLEEP DFYKTKIKLKCILLHAFRIRAVTIDRVMSYLNAS</p> <p>p40 Subunit: ELKKDVYVVELDWYPDAPGEMVVLTCDTPEEDGITWTLDQSSEVLGS GKTLTIQVKEFGDAGQYTCHKGGEVLSHSLLLLHKKEDGIWSTDILKDQKEPKNKFTL RCEAKNYSGRFTCWWLTTISTDLTFSVKSSRGSSDPQGVTCGAATLSAERVGRDN KEYEYSVEQCEDSACPAAEESLPIEVMDAVHKLKYENYTSSFFIRDIIKPDPPKNLQ LKPLKNSRQVEVSWEYPDTWSTPHSYFSLTFCVQVQGKSKREKKDRVFTDKTSATV ICRKNASISVRAQDRYYSSSWSEWASVPCS</p>
Endotoxin	<1.0 EU per 1µg (determined by the LAL method)

Tel: 1-631-559-9269 1-516-512-3133

Email: info@creative-biomart.com Fax: 1-631-938-8127

45-1 Ramsey Road, Shirley, NY 11967, USA

Purity	> 90% as determined by SDS-PAGE; > 95% as determined by HPLC.
Storage	Store it under sterile conditions at -80°C. It is recommended that the protein be aliquoted for optimal storage. Avoid repeated freeze-thaw cycles.
Concentration	0.5 ug/ul. Centrifuge the vial at 4°C before opening to recover the entire contents.
GENE INFORMATION	
Gene Name	IL12A interleukin 12A (natural killer cell stimulatory factor 1, cytotoxic lymphocyte maturation factor 1, p35) [Homo sapiens]
Official Symbol	IL12A
Synonyms	IL12A; interleukin 12A (natural killer cell stimulatory factor 1, cytotoxic lymphocyte maturation factor 1, p35); NKSF1; interleukin-12 subunit alpha; CLMF; cytotoxic lymphocyte maturation factor 1; p35; IL 12; subunit p35; IL 12A; IL35 subunit; interleukin 12; interleukin 12 alpha chain; natural killer cell stimulatory factor 1; 35 kD subunit; NF cell stimulatory factor chain 1; NFSK; CLMF p35; IL-12 subunit p35; IL-12, subunit p35; interleukin 12, p35; interleukin-12 alpha chain; NK cell stimulatory factor chain 1; cytotoxic lymphocyte maturation factor 1, p35; cytotoxic lymphocyte maturation factor 35 kDa subunit; natural killer cell stimulatory factor 1, 35 kD subunit; P35; IL-12A;
Gene ID	3592
mRNA Refseq	NM_000882
Protein Refseq	NP_000873
MIM	161560

 Tel: 1-631-559-9269 1-516-512-3133

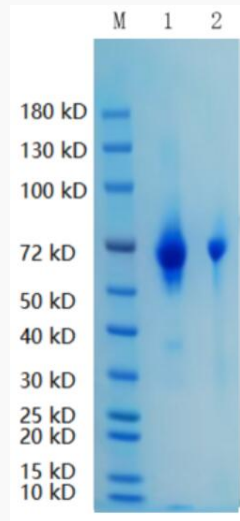
 Email: info@creative-biomart.com  Fax: 1-631-938-8127

 45-1 Ramsey Road, Shirley, NY 11967, USA

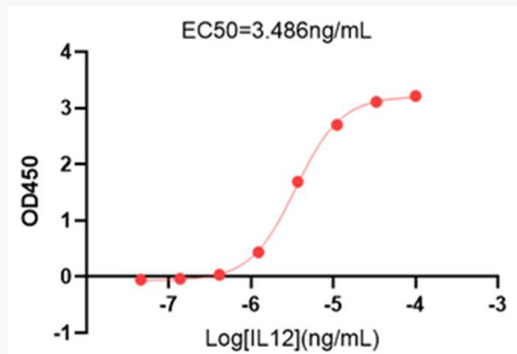
UniProt ID

P29459

SDS-PAGE



Activity



 Tel: 1-631-559-9269 1-516-512-3133

 Email: info@creative-biomart.com  Fax: 1-631-938-8127

 45-1 Ramsey Road, Shirley, NY 11967, USA