

## Recombinant Human IL12A protein, Fc-tagged

**Cat. No.** IL12A-309H    **Lot. No.** (See product label)

### SPECIFICATION

#### Product Overview

Recombinant Human IL12A (Arg23-Ser219) protein was fused to human IgG1 Fc tag at C-terminus and expressed in human 293 cells (HEK293).

#### Species

Human

#### Source

HEK293

#### ProteinLength


Arg23-Ser219

#### Description

Interleukin-12 (IL12) is also known as natural killer cell stimulatory factor (NKSF), cytotoxic lymphocyte maturation factor (CLMF), is a heterodimeric cytokine encoded by two separate genes, IL-12A (p35) and IL-12B (p40). IL12 is naturally produced by dendritic cells, macrophages and human B-lymphoblastoid cells (NC-37) in response to antigenic stimulation. IL-12 is involved in the differentiation of naive T cells into Th0 cells and plays an important role in the activities of natural killer cells and T lymphocytes. IL-12 also has anti-angiogenic activity, which means it can block the formation of new blood vessels. Interleukin-12 subunit alpha (IL12A) also known as NKSF1, CLMF1 and P35, IL12A shows significant sequence similarity to IL-6, G-CSF, and exerts biological activities only when the IL12B is co-expressed. IL12B deficient mice are resistant to the induction of experimental chronic inflammatory diseases whereas IL12A knock-out mice develop more severe forms, suggesting opposite functions of the two subunits in the outcome of chronic inflammatory diseases.

#### Predicted N Terminal

Arg23

 Tel: 1-631-559-9269    1-516-512-3133

 Email: [info@creative-biomart.com](mailto:info@creative-biomart.com)     Fax: 1-631-938-8127

 45-1 Ramsey Road, Shirley, NY 11967, USA

<b>Form</b>	Lyophilized from 0.22 µm filtered solution in Tris with Glycine, Arginine and NaCl, pH7.5, 10% trehalose.
<b>Molecular Mass</b>	The protein has a calculated MW of 49.2 kDa. The protein migrates as 65-80 kDa under reducing (R) condition (SDS-PAGE) due to glycosylation.
<b>Endotoxin</b>	Less than 1.0 EU per µg by the LAL method.
<b>Purity</b>	>92% as determined by SDS-PAGE.
<b>Storage</b>	<p>For long term storage, the product should be stored at lyophilized state at -20 centigrade or lower.</p> <p>Please avoid repeated freeze-thaw cycles.</p> <p>This product is stable after storage at:</p> <p>-20 to -70 centigrade for 12 months in lyophilized state;</p> <p>-70 centigrade for 3 months under sterile conditions after reconstitution.</p>
<b>Reconstitution</b>	It is recommended that sterile water be added to the vial to prepare a stock solution of 0.2 ug/ul. Centrifuge the vial at 4°C before opening to recover the entire contents.

## GENE INFORMATION

<b>Gene Name</b>	IL12A
<b>Official Symbol</b>	IL12A
<b>Synonyms</b>	IL12A; interleukin 12A (natural killer cell stimulatory factor 1, cytotoxic lymphocyte maturation factor 1, p35); NKSF1; interleukin-12 subunit alpha; CLMF; cytotoxic lymphocyte maturation factor 1; p35; IL 12; subunit p35; IL 12A; IL35 subunit; interleukin 12; interleukin 12 alpha chain; natural killer cell stimulatory factor 1; 35 kD subunit; NF cell stimulatory factor chain 1; NFSK; CLMF p35; IL-12 subunit p35; IL-

 Tel: 1-631-559-9269 1-516-512-3133

 Email: [info@creative-biomart.com](mailto:info@creative-biomart.com)  Fax: 1-631-938-8127

 45-1 Ramsey Road, Shirley, NY 11967, USA

12, subunit p35; interleukin 12, p35; interleukin-12 alpha chain; NK cell stimulatory factor chain 1; cytotoxic lymphocyte maturation factor 1, p35; cytotoxic lymphocyte maturation factor 35 kDa subunit; natural killer cell stimulatory factor 1, 35 kD subunit; P35; IL-12A

**Gene ID** [3592](#)

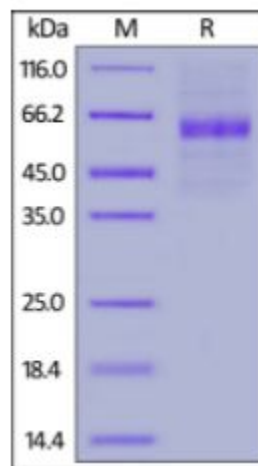
**mRNA Refseq** [NM\\_000882](#)

**Protein Refseq** [NP\\_000873](#)

**MIM** [161560](#)

**UniProt ID** [P29459](#)


**SDS-PAGE of IL12A-309H**



Human IL-12A, Fc Tag on SDS-PAGE under reducing (R) condition. The gel was stained overnight with Coomassie Blue. The purity of the protein is greater than 92%.

 Tel: 1-631-559-9269 1-516-512-3133

 Email: [info@creative-biomart.com](mailto:info@creative-biomart.com)  Fax: 1-631-938-8127

 45-1 Ramsey Road, Shirley, NY 11967, USA