

Recombinant Human IL12A protein, His-tagged

Cat. No. IL12A-315H Lot. No. (See product label)

SPECIFICATION

Product Overview	Recombinant Human IL12A protein(P29459) (Met 1-Ser 219) was expressed in Human Cells, fused with a polyhistidine tag at the C-terminus.
Species	Human
Source	Human Cells
ProteinLength	1-219 aa
Form	Lyophilized from sterile PBS, pH 7.4.
Bio-activity	Measured by its ability to bind Human IL12B-his in functional ELISA.
Molecular Mass	The recombinant human IL12A consists of 208 amino acids and has a predicted molecular mass of 24 kDa. As a result of glycosylation, the rhIL12A migrates as an approximately 35-40 kDa band in SDS-PAGE under reducing conditions.
Endotoxin	Less than 0.1 EU per µg by the LAL method.
Purity	> 92 % as determined by SDS-PAGE
Storage	Store it under sterile conditions at -20°C to -80°C upon receiving. Recommend to aliquot the protein into smaller quantities for optimal storage. Avoid repeated freeze-thaw cycles.

 Tel: 1-631-559-9269 1-516-512-3133

 Email: info@creative-biomart.com  Fax: 1-631-938-8127

 45-1 Ramsey Road, Shirley, NY 11967, USA

Reconstitution It is recommended that sterile water be added to the vial to prepare a stock solution of 0.2 ug/ul. Centrifuge the vial at 4°C before opening to recover the entire contents.

GENE INFORMATION

Gene Name IL12A interleukin 12A (natural killer cell stimulatory factor 1, cytotoxic lymphocyte maturation factor 1, p35) [Homo sapiens]

Official Symbol IL12A

Synonyms IL12A; interleukin 12A (natural killer cell stimulatory factor 1, cytotoxic lymphocyte maturation factor 1, p35); NKSF1; interleukin-12 subunit alpha; CLMF; cytotoxic lymphocyte maturation factor 1; p35; IL 12; subunit p35; IL 12A; IL35 subunit; interleukin 12; interleukin 12 alpha chain; natural killer cell stimulatory factor 1; 35 kD subunit; NF cell stimulatory factor chain 1; NFSK; CLMF p35; IL-12 subunit p35; IL-12, subunit p35; interleukin 12, p35; interleukin-12 alpha chain; NK cell stimulatory factor chain 1; cytotoxic lymphocyte maturation factor 1, p35; cytotoxic lymphocyte maturation factor 35 kDa subunit; natural killer cell stimulatory factor 1, 35 kD subunit; P35; IL-12A;

Gene ID 3592

mRNA Refseq NM_000882

Protein Refseq NP_000873

MIM 161560

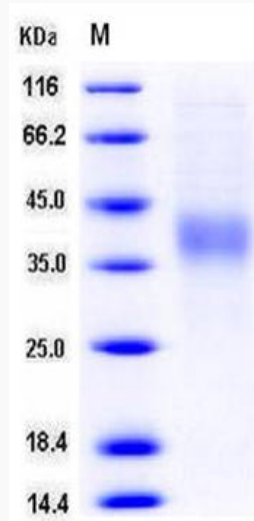
UniProt ID P29459

 Tel: 1-631-559-9269 1-516-512-3133

 Email: info@creative-biomart.com  Fax: 1-631-938-8127

 45-1 Ramsey Road, Shirley, NY 11967, USA

SDS-PAGE



 Tel: 1-631-559-9269 1-516-512-3133

 Email: info@creative-biomart.com  Fax: 1-631-938-8127

 45-1 Ramsey Road, Shirley, NY 11967, USA