

Active Recombinant Human IL12A protein, His-tagged

Cat. No. IL12A-5633H **Lot. No.** (See product label)

SPECIFICATION

Product Overview	Active Recombinant Human IL12A protein(P29459)(23~219 aa), fused with N-terminal His tag, was expressed in E.coli.
Species	Human
Source	E.coli
ProteinLength	23-219 aa
Form	Lyophilized from sterile PBS, pH7.4, containing 0.01% SKL, 1mM DTT, 5% Trehalose and Proclin300.
Bio-activity	human IL12A is a subunit of interleukin 12, a cytokine that acts on T and natural killer cells, and has a broad array of biological activities. Interleukin 12 is a disulfide-linked heterodimer composed of the 40 kD cytokine receptor like subunit encoded by this gene, and a 35 kD subunit encoded by IL12A. This cytokine is expressed by activated macrophages that serve as an essential inducer of Th1 cells development. Interleukin 12A can combine with Epstein Barr Virus Induced Protein 3 (EBI3). Thus a functional binding ELISA assay was conducted to detect the interaction of recombinant human IL12A and recombinant human EBI3. Briefly, IL12A were diluted serially in PBS, with 0.01% BSA (pH 7.4). Duplicate samples of 100 μ were then transferred to EBI3-coated microtiter wells and incubated for 2h at 37°C. Wells were washed with PBST and incubated for 1h with anti-IL12A pAb, then aspirated and washed 3 times. After incubation with HRP labelled secondary antibody, wells were aspirated and washed 3

 Tel: 1-631-559-9269 1-516-512-3133

 Email: info@creative-biomart.com  Fax: 1-631-938-8127

 45-1 Ramsey Road, Shirley, NY 11967, USA

times. With the addition of substrate solution, wells were incubated 15-25 minutes at 37°C. Finally, add 50 μ stop solution to the wells and read at 450 nm immediately. The binding activity of recombinant human IL12A and recombinant human EB13 was shown, the EC50 for this effect is 38.3 ng/mL.

Molecular Mass	29.2kDa
Endotoxin	<1.0EU per 1μg (determined by the LAL method).
Purity	> 90% as determined by SDS-PAGE.
Storage	Avoid repeated freeze/thaw cycles. Store at -20°C for 12 months. Aliquot and store at -80°C for 12 months.
Reconstitution	Reconstitute in 20mM Tris, 150mM NaCl (PH8.0) to a concentration of 0.1-1.0 mg/mL. Do not vortex.

GENE INFORMATION

Gene Name	IL12A interleukin 12A (natural killer cell stimulatory factor 1, cytotoxic lymphocyte maturation factor 1, p35) [Homo sapiens]
Official Symbol	IL12A
Synonyms	IL12A; interleukin 12A (natural killer cell stimulatory factor 1, cytotoxic lymphocyte maturation factor 1, p35); NKSF1; interleukin-12 subunit alpha; CLMF; cytotoxic lymphocyte maturation factor 1; p35; IL 12; subunit p35; IL 12A; IL35 subunit; interleukin 12; interleukin 12 alpha chain; natural killer cell stimulatory factor 1; 35 kD subunit; NF cell stimulatory factor chain 1; NFSK; CLMF p35; IL-12 subunit p35; IL-12, subunit p35; interleukin 12, p35; interleukin-12 alpha chain; NK cell stimulatory factor chain 1; cytotoxic lymphocyte maturation factor 1, p35; cytotoxic lymphocyte

 Tel: 1-631-559-9269 1-516-512-3133

 Email: info@creative-biomart.com  Fax: 1-631-938-8127

 45-1 Ramsey Road, Shirley, NY 11967, USA

maturation factor 35 kDa subunit; natural killer cell stimulatory factor 1, 35 kD subunit; P35; IL-12A;

Gene ID [3592](#)

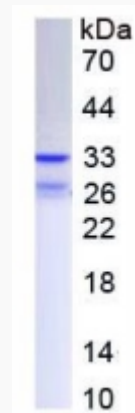
mRNA Refseq [NM_000882](#)

Protein Refseq [NP_000873](#)

MIM [161560](#)

UniProt ID [P29459](#)

SDS-PAGE

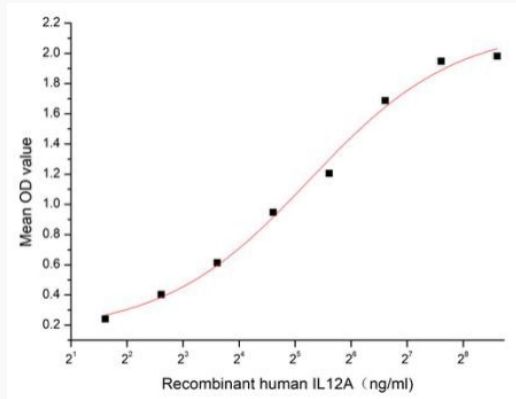


 Tel: 1-631-559-9269 1-516-512-3133

 Email: info@creative-biomart.com  Fax: 1-631-938-8127

 45-1 Ramsey Road, Shirley, NY 11967, USA

Activity



 Tel: 1-631-559-9269 1-516-512-3133

 Email: info@creative-biomart.com  Fax: 1-631-938-8127

 45-1 Ramsey Road, Shirley, NY 11967, USA