

Recombinant Ferret IL12B Protein, Met1-Ser329, C-His tagged

Cat. No. IL12B-014F Lot. No. (See product label)

SPECIFICATION

Product Overview	Recombinant Ferret IL12B Protein (Met1-Ser329) with C-His tag was expressed in HEK293.
Species	Ferret
Source	HEK293
ProteinLength	Met1-Ser329
Description	Interleukin 12 p40 subunit (IL-12p40) is a component of the bioactive cytokines IL-12 and IL-23. Existing in either a monomeric or homodimeric form it is induced in excess of the other subunits of IL-12 and IL-23. Most known for providing negative feedback by competing for the IL-12 receptor it also functions as a chemoattractant for macrophages and is associated with several pathogenic inflammatory responses.
Form	Lyophilized
Molecular Mass	Predicted Molecular Mass: 39.1 kDa SDS-PAGE: 41.7 kDa
Purity	> 99% by SDS-PAGE
Applications	ELISA and Western Blot Analysis
Notes	For Research Use Only.

 Tel: 1-631-559-9269 1-516-512-3133

 Email: info@creative-biomart.com  Fax: 1-631-938-8127

 45-1 Ramsey Road, Shirley, NY 11967, USA

Storage	2 years at -20 to -80 centigrade as supplied. 1 month at 4 centigrade after reconstitution with preservative. 1 year at -20 to -80 centigrade after reconstitution.
Storage Buffer	Lyophilized from 1xPBS with Trelahose
Shipping	Ambient
Reconstitution	Reconstitute at 25 µg/mL in sterile PBS containing at least 0.1% protein

GENE INFORMATION

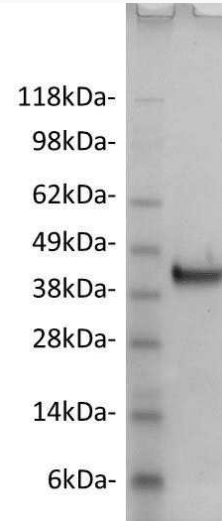
Gene Name	IL12B interleukin 12B [<i>Mustela putorius furo</i> (domestic ferret)]
Official Symbol	IL12B
Synonyms	IL12B; interleukin 12B; IL-12; IL12p40; interleukin-12 subunit beta; interleukin 12B (natural killer cell stimulatory factor 2, cytotoxic lymphocyte maturation factor 2, p40); interleukin 12p40; interleukin-12
Gene ID	101676232
mRNA Refseq	XM_004737709
Protein Refseq	XP_004737766
UniProt ID	A0A8U0MDC4

 Tel: 1-631-559-9269 1-516-512-3133

 Email: info@creative-biomart.com  Fax: 1-631-938-8127

 45-1 Ramsey Road, Shirley, NY 11967, USA

**Ferret IL-12p40 (2
µg) on a Coomassie
stained 4-12% SDS-
PAGE gel, reducing
conditions.**



 Tel: 1-631-559-9269 1-516-512-3133

 Email: info@creative-biomart.com  Fax: 1-631-938-8127

 45-1 Ramsey Road, Shirley, NY 11967, USA