

## Recombinant Chicken IL12B Protein, His-tagged

**Cat. No.** IL12B-1001C    **Lot. No.** (See product label)

### SPECIFICATION

<b>Product Overview</b>	Recombinant Chicken IL12B Protein (Gln21-Arg315) with His tag was expressed in E. coli.
<b>Species</b>	Chicken
<b>Source</b>	E.coli
<b>ProteinLength</b>	Gln21-Arg315
<b>Description</b>	<p>This gene encodes a subunit of interleukin 12, a cytokine that acts on T and natural killer cells, and has a broad array of biological activities. Interleukin 12 is a disulfide-linked heterodimer composed of the 40 kD cytokine receptor like subunit encoded by this gene, and a 35 kD subunit encoded by IL12A. This cytokine is expressed by activated macrophages that serve as an essential inducer of Th1 cells development. This cytokine has been found to be important for sustaining a sufficient number of memory/effector Th1 cells to mediate long-term protection to an intracellular pathogen. Overexpression of this gene was observed in the central nervous system of patients with multiple sclerosis (MS), suggesting a role of this cytokine in the pathogenesis of the disease. The promoter polymorphism of this gene has been reported to be associated with the severity of atopic and non-atopic asthma in children.</p>
<b>Form</b>	Freeze-dried powder
<b>Molecular Mass</b>	Predicted Molecular Mass: 37.7 kDa; Accurate Molecular Mass: 40 kDa

 Tel: 1-631-559-9269    1-516-512-3133

 Email: [info@creative-biomart.com](mailto:info@creative-biomart.com)     Fax: 1-631-938-8127

 45-1 Ramsey Road, Shirley, NY 11967, USA

<b>Purity</b>	> 97%
<b>Applications</b>	Positive Control; Immunogen; SDS-PAGE; WB.
<b>Stability</b>	The thermal stability is described by the loss rate. The loss rate was determined by accelerated thermal degradation test, that is, incubate the protein at 37 centigrade for 48h, and no obvious degradation and precipitation were observed. The loss rate is less than 5% within the expiration date under appropriate storage condition.
<b>Storage</b>	Avoid repeated freeze/thaw cycles. Store at 2-8 centigrade for one month. Aliquot and store at -80 centigrade for 12 months.
<b>Storage Buffer</b>	PBS, pH7.4, containing 0.01% SKL, 1mM DTT, 5% Trehalose and Proclin300.
<b>Reconstitution</b>	Reconstitute in PBS or others.

## GENE INFORMATION

<b>Gene Name</b>	IL12B interleukin 12B [ <a href="#">Gallus gallus (chicken)</a> ]
<b>Official Symbol</b>	<a href="#">IL12B</a>
<b>Synonyms</b>	IL12B; interleukin 12B; IL-12B; IL-12p40; interleukin-12 subunit beta; IL-12 p40 subunit; interleukin 12B (natural killer cell stimulatory factor 2, cytotoxic lymphocyte maturation factor 2, p40); interleukin-12 beta chain; interleukin-12 p40 subunit; interleukin-12p40
<b>Gene ID</b>	<a href="#">404671</a>
<b>mRNA Refseq</b>	<a href="#">NM_213571</a>

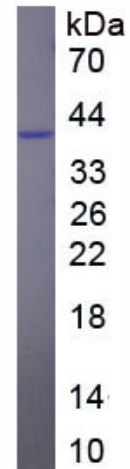
 Tel: 1-631-559-9269 1-516-512-3133

 Email: [info@creative-biomart.com](mailto:info@creative-biomart.com)  Fax: 1-631-938-8127

 45-1 Ramsey Road, Shirley, NY 11967, USA

Protein Refseq NP\_998736

UniProt ID Q6X0K9



Tel: 1-631-559-9269 1-516-512-3133

Email: [info@creative-biomart.com](mailto:info@creative-biomart.com) Fax: 1-631-938-8127

45-1 Ramsey Road, Shirley, NY 11967, USA