

Recombinant Full Length Human IL12B Protein, C-Flag-tagged

Cat. No. IL12B-1267HFL Lot. No. (See product label)

SPECIFICATION

Product Overview	Recombinant Full Length Human IL12B Protein, fused to Flag-tag at C-terminus, was expressed in Mammalian cells.
Species	Human
Source	Mammalian Cells
Description	<p>This gene encodes a subunit of interleukin 12, a cytokine that acts on T and natural killer cells, and has a broad array of biological activities. Interleukin 12 is a disulfide-linked heterodimer composed of the 40 kD cytokine receptor like subunit encoded by this gene, and a 35 kD subunit encoded by IL12A. This cytokine is expressed by activated macrophages that serve as an essential inducer of Th1 cells development. This cytokine has been found to be important for sustaining a sufficient number of memory/effector Th1 cells to mediate long-term protection to an intracellular pathogen. Overexpression of this gene was observed in the central nervous system of patients with multiple sclerosis (MS), suggesting a role of this cytokine in the pathogenesis of the disease. The promoter polymorphism of this gene has been reported to be associated with the severity of atopic and non-atopic asthma in children.</p>
Form	25 mM Tris HCl, pH 7.3, 100 mM glycine, 10% glycerol.
Molecular Mass	34.6 kDa
AA Sequence	MCHQQLVISWFSLVFLASPLVAIWELKKDVYVVELDWYPDAPGEMVVLTCDTPEED

 Tel: 1-631-559-9269 1-516-512-3133

 Email: info@creative-biomart.com  Fax: 1-631-938-8127

 45-1 Ramsey Road, Shirley, NY 11967, USA

GITWTLDQSSEVLG SGKTLTIQVKEFGDAGQYTCHKGGEVLSHSLLLLHKKEDGIW
 STDILKDQKEPKNKTFLRCEAKNYSGRF TCWWLTTISTDLTFSVKSSRGSSDPQGV
 TCGAATLSAERVGRDNKEYEYSVEQCQEDSACPAAEESLPIEV MVDVHKLKYENYT
 SSFFIRDIIKPDPPKNLQLKPLKNSRQVEVSWEYPDTWSTPHSYFSLTFCVQVQGGK
 SKREKKDRVFTDKTSATVICRKNASISVRAQDRYYSSSWSEWASVPCSTRTRPLEQ
 KLISEEDLAANDILDYKDDDDKV

Purity	> 80% as determined by SDS-PAGE and Coomassie blue staining.
Stability	Stable for 12 months from the date of receipt of the product under proper storage and handling conditions. Avoid repeated freeze-thaw cycles.
Storage	Store at -80 centigrade.
Concentration	>50 ug/mL as determined by microplate BCA method.
Preparation	Recombinant protein was captured through anti-DDK affinity column followed by conventional chromatography steps.
Protein Families	Druggable Genome, Secreted Protein, Transmembrane
Protein Pathways	Allograft rejection, Cytokine-cytokine receptor interaction, Jak-STAT signaling pathway, RIG-I-like receptor signaling pathway, Toll-like receptor signaling pathway, Type I diabetes mellitus
Full Length	Full L.

GENE INFORMATION

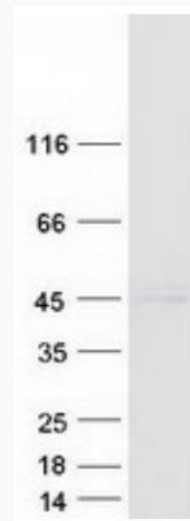
Gene Name [IL12B interleukin 12B \[Homo sapiens \(human\) \]](#)

 Tel: 1-631-559-9269 1-516-512-3133

 Email: info@creative-biomart.com  Fax: 1-631-938-8127

 45-1 Ramsey Road, Shirley, NY 11967, USA

Official Symbol	IL12B
Synonyms	CLMF; NKSF; CLMF2; IMD28; IMD29; NKSF2; IL-12B
Gene ID	3593
mRNA Refseq	NM_002187.3
Protein Refseq	NP_002178.2
MIM	161561
UniProt ID	P29460



Coomassie blue staining of purified IL12B protein.

 Tel: 1-631-559-9269 1-516-512-3133

 Email: info@creative-biomart.com  Fax: 1-631-938-8127

 45-1 Ramsey Road, Shirley, NY 11967, USA