

## Recombinant Human IL12B protein, His-tagged

Cat. No. IL12B-172H Lot. No. (See product label)

### SPECIFICATION

<b>Product Overview</b>	Recombinant Human IL12B protein(P29460)(Ile23-Ser328), fused with C-terminal His tag, was expressed in HEK293.
<b>Species</b>	Human
<b>Source</b>	HEK293
<b>ProteinLength</b>	Ile23-Ser328
<b>Tag</b>	C-His
<b>Form</b>	Lyophilized from 0.22µm filtered solution in PBS (pH 7.4). Normally 5% trehalose is added as protectant before lyophilization.
<b>Bio-activity</b>	Immobilized Human IL-12B, His Tag at 5µg/ml (100µl/well) on the plate. Dose response curve for Human IL-12 R beta 1, hFc Tag with the EC50 of 0.11µg/ml determined by ELISA.
<b>Molecular Mass</b>	The protein has a predicted MW of 34.7 kDa. Due to glycosylation, the protein migrates to 40-50 kDa based on Tris-Bis PAGE result.
<b>Endotoxin</b>	Less than 1EU per µg by the LAL method.
<b>Purity</b>	> 95% as determined by Tris-Bis PAGE

 Tel: 1-631-559-9269 1-516-512-3133

 Email: [info@creative-biomart.com](mailto:info@creative-biomart.com)  Fax: 1-631-938-8127

 45-1 Ramsey Road, Shirley, NY 11967, USA

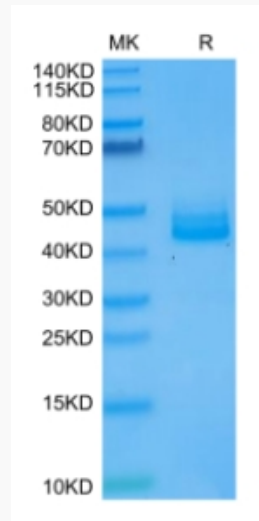
<b>Storage</b>	Reconstituted protein stable at -80°C for 12 months, 4°C for 1 week. Use a manual defrost freezer and avoid repeated freeze-thaw cycles.
<b>Reconstitution</b>	Centrifuge tubes before opening. Reconstituting to a concentration more than 100 µg/ml is recommended. Dissolve the lyophilized protein in distilled water.
<b>GENE INFORMATION</b>	
<b>Gene Name</b>	IL12B interleukin 12B (natural killer cell stimulatory factor 2, cytotoxic lymphocyte maturation factor 2, p40) [ Homo sapiens ]
<b>Official Symbol</b>	IL12B
<b>Synonyms</b>	IL12B; interleukin 12B (natural killer cell stimulatory factor 2, cytotoxic lymphocyte maturation factor 2, p40); NKSF2; interleukin-12 subunit beta; CLMF; CLMF2; cytotoxic lymphocyte maturation factor 2; p40; IL 12B; IL12; subunit p40; interleukin 12; interleukin 12 beta chain; natural killer cell stimulatory factor; 40 kD subunit; natural killer cell stimulatory factor 2; NKSF; CLMF p40; IL-12 subunit p40; IL12, subunit p40; interleukin 12, p40; interleukin-12 beta chain; NK cell stimulatory factor chain 2; cytotoxic lymphocyte maturation factor 40 kDa subunit; natural killer cell stimulatory factor, 40 kD subunit; IL-12B;
<b>Gene ID</b>	3593
<b>mRNA Refseq</b>	NM_002187
<b>Protein Refseq</b>	NP_002178
<b>MIM</b>	161561
<b>UniProt ID</b>	P29460

 Tel: 1-631-559-9269 1-516-512-3133

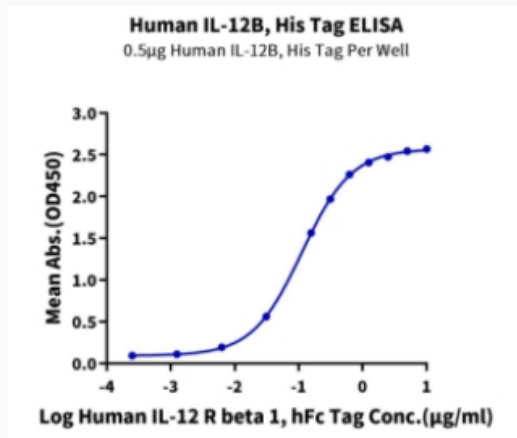
 Email: [info@creative-biomart.com](mailto:info@creative-biomart.com)  Fax: 1-631-938-8127

 45-1 Ramsey Road, Shirley, NY 11967, USA

**Tris-Bis PAGE**



**ELISA Data**



 Tel: 1-631-559-9269 1-516-512-3133

 Email: [info@creative-biomart.com](mailto:info@creative-biomart.com)  Fax: 1-631-938-8127

 45-1 Ramsey Road, Shirley, NY 11967, USA