

Active Recombinant Human IL12B Protein (Ile23-Ser328), C-His tagged, Animal-free, Carrier-free

Cat. No. IL12B-180H Lot. No. (See product label)

SPECIFICATION

Product Overview	Recombinant Human IL12B Protein (Ile23-Ser328) with C-His tag was expressed in E. coli and Animal-free as well as Carrier-free.
Species	Human
Source	E.coli
ProteinLength	Ile23-Ser328
Description	Interleukin 12 (IL-12) is a pro-inflammatory cytokine with a molecular weight of 70 kDa composed of two subunits, IL-12p35 (35 kDa) and IL-12p40 (40 kDa). IL-12p40 is induced in excess over the other subunits of IL-12 and IL-23 and can exist in a monomeric or homodimer form.
Form	Lyophilized
Bio-activity	Measure by its ability to induce cell proliferation in PHA-activated human peripheral blood lymphocytes (PBMC) using a concentration range of 5-50 ng/mL. Note: Results may vary from different PBMC donors.
Molecular Mass	The protein has a calculated MW of 35.64 kDa. The protein migrates as 45 kDa under reducing condition (SDS-PAGE analysis).
Endotoxin	< 0.1 EU/μg of the protein by the LAL method.

 Tel: 1-631-559-9269 1-516-512-3133

 Email: info@creative-biomart.com  Fax: 1-631-938-8127

 45-1 Ramsey Road, Shirley, NY 11967, USA

Purity	>98% as determined by SDS-PAGE analysis.
Storage	This product is stable after storage at: -20 centigrade for 12 months in lyophilized state from date of receipt. -20 or -80 centigrade for 1 month under sterile conditions after reconstitution. Avoid repeated freeze/thaw cycles.
Storage Buffer	Lyophilized from a 0.2 µm filtered solution of PBS, pH 8.0.
Reconstitution	It is recommended to reconstitute the lyophilized protein in sterile H2O to a concentration not less than 200 µg/mL and incubate the stock solution for at least 20 min to ensure sufficient re-dissolved.
Shipping	The product is shipped with polar packs. Upon receipt, store it immediately at -20 centigrade or lower for long term storage.

GENE INFORMATION

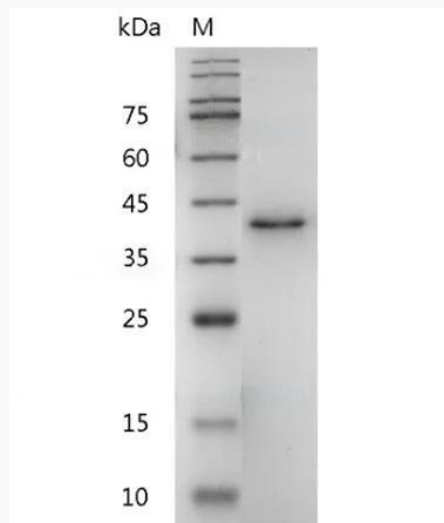
Gene Name	IL12B interleukin 12B (natural killer cell stimulatory factor 2, cytotoxic lymphocyte maturation factor 2, p40) [Homo sapiens (human)]
Official Symbol	IL12B
Synonyms	IL12B; interleukin 12B (natural killer cell stimulatory factor 2, cytotoxic lymphocyte maturation factor 2, p40); NKSF2; interleukin-12 subunit beta; CLMF; CLMF2; cytotoxic lymphocyte maturation factor 2; p40; IL 12B; IL12; subunit p40; interleukin 12; interleukin 12 beta chain; natural killer cell stimulatory factor; 40 kD subunit; natural killer cell stimulatory factor 2; NKSF; CLMF p40; IL-12 subunit p40; IL12, subunit p40; interleukin 12, p40; interleukin-12 beta chain; NK cell stimulatory factor chain 2; cytotoxic lymphocyte maturation factor 40 kDa subunit; natural killer cell

 Tel: 1-631-559-9269 1-516-512-3133

 Email: info@creative-biomart.com  Fax: 1-631-938-8127

 45-1 Ramsey Road, Shirley, NY 11967, USA

stimulatory factor, 40 kD subunit; IL-12B;

Gene ID 3593**mRNA Refseq** NM_002187**Protein Refseq** NP_002178**MIM** 161561**UniProt ID** P29460**SDS-PAGE analysis
of recombinant
human IL-12 (p40).** Tel: 1-631-559-9269 1-516-512-3133 Email: info@creative-biomart.com  Fax: 1-631-938-8127 45-1 Ramsey Road, Shirley, NY 11967, USA