

## Active Recombinant Human IL12B protein, His-tagged

**Cat. No.** IL12B-2290H    **Lot. No.** (See product label)

### SPECIFICATION

<b>Product Overview</b>	Active Recombinant Human IL12B protein(P29460)(30~320 aa), fused with N-terminal His tag, was expressed in E.coli.
<b>Species</b>	Human
<b>Source</b>	E.coli
<b>ProteinLength</b>	30-320 aa
<b>Form</b>	Lyophilized from sterile 20mM Tris, 150mM NaCl, pH8.0, containing 1mM EDTA, 1mM DTT, 0.01% SKL, 5% Trehalose and Proclin300.
<b>Bio-activity</b>	<p>Interleukin 12B (IL12B) encodes a subunit of interleukin 12, a cytokine that acts on T and natural killer cells, and has a broad array of biological activities. Interleukin 12 is a disulfide-linked heterodimer composed of the 40 kD cytokine receptor like subunit encoded by this gene, and a 35 kD subunit encoded by IL12A. This cytokine is expressed by activated macrophages that serve as an essential inducer of Th1 cells development. Interleukin 12B can combine with Interleukin 12 Receptor Beta 1 (IL12Rb1). Thus a binding ELISA assay was conducted to detect the interaction of recombinant human IL12B and recombinant human IL12Rb1. Briefly, biotin-linked recombinant human IL12B were diluted serially in PBS, with 0.01% BSA (pH 7.4). Duplicate samples of 100µl then transferred to IL12Rb1-coated microtiter wells and incubated for 1h at 37°C. Wells were washed with PBST 3 times and incubation with HRP conjugate for 30min, then wells were aspirated and washed 5 times. With the</p>

 Tel: 1-631-559-9269    1-516-512-3133

 Email: [info@creative-biomart.com](mailto:info@creative-biomart.com)     Fax: 1-631-938-8127

 45-1 Ramsey Road, Shirley, NY 11967, USA

addition of substrate solution, wells were incubated 15-25 minutes at 37°C. Finally, add 50µstop solution to the wells and read at 450nm immediately. The binding activity of IL12B and IL12Rb1 was shown, and this effect was in a dose dependent manner.

**Molecular Mass** 36.6kDa

**Endotoxin** <1.0EU per 1µg (determined by the LAL method).

**Purity** > 95% as determined by SDS-PAGE.

**Storage** Avoid repeated freeze/thaw cycles. Store at -20°C for 12 months. Aliquot and store at -80°C for 12 months.

**Reconstitution** Reconstitute in 20mM Tris, 150mM NaCl (PH8.0) to a concentration of 0.1-1.0 mg/mL. Do not vortex.

## GENE INFORMATION

**Gene Name** IL12B interleukin 12B (natural killer cell stimulatory factor 2, cytotoxic lymphocyte maturation factor 2, p40) [ Homo sapiens ]

**Official Symbol** IL12B

**Synonyms** IL12B; interleukin 12B (natural killer cell stimulatory factor 2, cytotoxic lymphocyte maturation factor 2, p40); NKSF2; interleukin-12 subunit beta; CLMF; CLMF2; cytotoxic lymphocyte maturation factor 2; p40; IL 12B; IL12; subunit p40; interleukin 12; interleukin 12 beta chain; natural killer cell stimulatory factor; 40 kD subunit; natural killer cell stimulatory factor 2; NKSF; CLMF p40; IL-12 subunit p40; IL12, subunit p40; interleukin 12, p40; interleukin-12 beta chain; NK cell stimulatory factor chain 2; cytotoxic lymphocyte maturation factor 40 kDa subunit; natural killer cell stimulatory factor, 40 kD subunit; IL-12B;

 Tel: 1-631-559-9269 1-516-512-3133

 Email: [info@creative-biomart.com](mailto:info@creative-biomart.com)  Fax: 1-631-938-8127

 45-1 Ramsey Road, Shirley, NY 11967, USA

**Gene ID** 3593

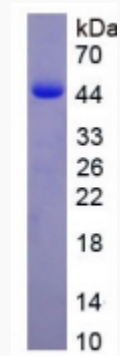
**mRNA Refseq** NM\_002187

**Protein Refseq** NP\_002178

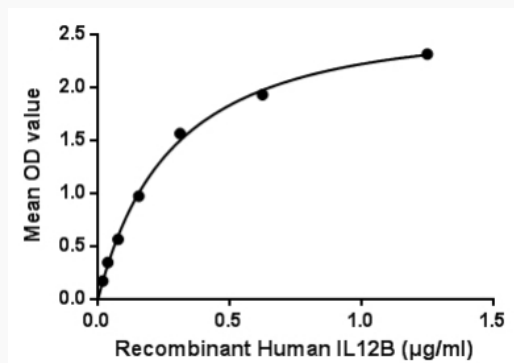
**MIM** 161561

**UniProt ID** P29460

**SDS-PAGE**



**Activity**



 Tel: 1-631-559-9269 1-516-512-3133

 Email: [info@creative-biomart.com](mailto:info@creative-biomart.com)  Fax: 1-631-938-8127

 45-1 Ramsey Road, Shirley, NY 11967, USA