

Active Recombinant Human IL12B protein, Fc-tagged

Cat. No. IL12B-310H Lot. No. (See product label)

SPECIFICATION

Product Overview	Active Recombinant Human IL12B protein(NP_002178.2) (Met 1-Ser 328) was expressed in Human Cells, fused with the Fc region of human IgG1 at the C-terminus.
Species	Human
Source	Human Cells
ProteinLength	1-328 aa
Form	Lyophilized from sterile 100mM Glycine, 10mM NaCl, 50mM Tris, pH 7.5.
Bio-activity	Measured by its binding ability in a functional ELISA. Immobilized human IL12RB1 at 20 µg/ml (100 µl/well) can bind human IL12B with a linear ranger of 2.56-64 ng/ml.
Molecular Mass	The recombinant human IL12B/Fc is a disulfide-linked homodimer. The reduced monomer consists of 544 amino acids and has a predicted molecular mass of 61.4 kDa. As a result of glycosylation, the rhIL12B/Fc monomer migrates as an approximately 70-80 kDa band in SDS-PAGE under reducing conditions.
Endotoxin	< 1.0 EU per µg of the protein as determined by the LAL method.
Purity	> 95 % as determined by SDS-PAGE
Storage	Store it under sterile conditions at -20°C to -80°C upon receiving. Recommend to aliquot the protein into smaller quantities for optimal storage. Avoid repeated freeze-

 Tel: 1-631-559-9269 1-516-512-3133

 Email: info@creative-biomart.com  Fax: 1-631-938-8127

 45-1 Ramsey Road, Shirley, NY 11967, USA

thaw cycles.

Reconstitution

It is recommended that sterile water be added to the vial to prepare a stock solution of 0.2 ug/ul. Centrifuge the vial at 4°C before opening to recover the entire contents.

GENE INFORMATION

Gene Name

IL12B interleukin 12B (natural killer cell stimulatory factor 2, cytotoxic lymphocyte maturation factor 2, p40) [Homo sapiens]

Official Symbol

IL12B

Synonyms

IL12B; interleukin 12B (natural killer cell stimulatory factor 2, cytotoxic lymphocyte maturation factor 2, p40); NKSF2; interleukin-12 subunit beta; CLMF; CLMF2; cytotoxic lymphocyte maturation factor 2; p40; IL 12B; IL12; subunit p40; interleukin 12; interleukin 12 beta chain; natural killer cell stimulatory factor; 40 kD subunit; natural killer cell stimulatory factor 2; NKSF; CLMF p40; IL-12 subunit p40; IL12, subunit p40; interleukin 12, p40; interleukin-12 beta chain; NK cell stimulatory factor chain 2; cytotoxic lymphocyte maturation factor 40 kDa subunit; natural killer cell stimulatory factor, 40 kD subunit; IL-12B;

Gene ID

3593

mRNA Refseq

NM_002187

Protein Refseq

NP_002178

MIM

161561

UniProt ID

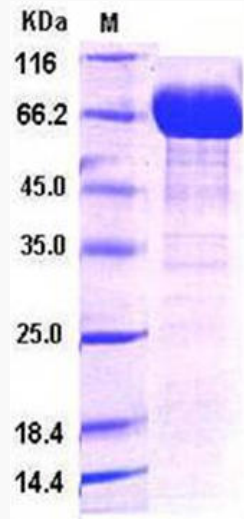
P29460

 Tel: 1-631-559-9269 1-516-512-3133

 Email: info@creative-biomart.com  Fax: 1-631-938-8127

 45-1 Ramsey Road, Shirley, NY 11967, USA

SDS-PAGE



 Tel: 1-631-559-9269 1-516-512-3133

 Email: info@creative-biomart.com  Fax: 1-631-938-8127

 45-1 Ramsey Road, Shirley, NY 11967, USA