

Recombinant Human IL12B protein, His-tagged

Cat. No. IL12B-3433H **Lot. No.** (See product label)

SPECIFICATION

Product Overview	Recombinant Human IL12B protein(P29460)(23-328aa), fused with C-terminal His tag, was expressed in Yeast.
Species	Human
Source	Yeast
ProteinLength	23-328aa
Tag	C-His
Form	If the delivery form is liquid, the default storage buffer is Tris/PBS-based buffer, 5%-50% glycerol. If the delivery form is lyophilized powder, the buffer before lyophilization is Tris/PBS-based buffer, 6% Trehalose, pH 8.0.
Molecular Mass	36.8 kDa
Purity	Greater than 85% as determined by SDS-PAGE.
Storage	Store at -20°C/-80°C upon receipt, aliquoting is necessary for mutiple use. Avoid repeated freeze-thaw cycles.
Reconstitution	We recommend that this vial be briefly centrifuged prior to opening to bring the contents to the bottom. Please reconstitute protein in deionized sterile water to a concentration of 0.1-1.0 mg/mL. We recommend to add 5-50% of glycerol (final

 Tel: 1-631-559-9269 1-516-512-3133

 Email: info@creative-biomart.com  Fax: 1-631-938-8127

 45-1 Ramsey Road, Shirley, NY 11967, USA

concentration) and aliquot for long-term storage at -20°C/-80°C.

AA Sequence

IWELKKDVYVVELDWYPDAPGEMVVLTCDTPEEDGITWTLDQSSEVLGSGKTLTIQV
 KEFGDAGQYTCHKGGEVLSHSLLLLHKKEDGIWSTDILKDQKEPKNKTFRLRCEAKNY
 SGRFTCWWLTTISTDLTFSVKSSRGSSDPQGVTCGAATLSAERVRGDNKEYEYSVE
 CQEDSACPAAEESLPIEVMVDAVHKLKYENYTSFFIRDIIKPDPPKNLQLKPLKNSR
 QVEVSWEYPDTWSTPHSYFSLTFCVQVQGKSKREKKDRVFTDKTSATVICRKNASI
 SVRAQDRYSSSWSEWASVPCS

GENE INFORMATION

Gene Name

IL12B interleukin 12B (natural killer cell stimulatory factor 2, cytotoxic lymphocyte maturation factor 2, p40) [Homo sapiens]

Official Symbol

IL12B

Synonyms

IL12B; interleukin 12B (natural killer cell stimulatory factor 2, cytotoxic lymphocyte maturation factor 2, p40); NKSF2; interleukin-12 subunit beta; CLMF; CLMF2; cytotoxic lymphocyte maturation factor 2; p40; IL 12B; IL12; subunit p40; interleukin 12; interleukin 12 beta chain; natural killer cell stimulatory factor; 40 kD subunit; natural killer cell stimulatory factor 2; NKSF; CLMF p40; IL-12 subunit p40; IL12, subunit p40; interleukin 12, p40; interleukin-12 beta chain; NK cell stimulatory factor chain 2; cytotoxic lymphocyte maturation factor 40 kDa subunit; natural killer cell stimulatory factor, 40 kD subunit; IL-12B;

Gene ID

3593

mRNA Refseq


NM_002187

Protein Refseq

NP_002178

 Tel: 1-631-559-9269 1-516-512-3133

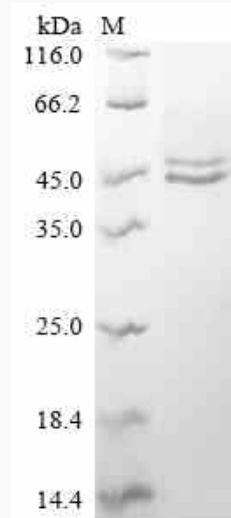
 Email: info@creative-biomart.com  Fax: 1-631-938-8127

 45-1 Ramsey Road, Shirley, NY 11967, USA

MIM 161561

UniProt ID P29460

SDS-PAGE



 Tel: 1-631-559-9269 1-516-512-3133

 Email: info@creative-biomart.com  Fax: 1-631-938-8127

 45-1 Ramsey Road, Shirley, NY 11967, USA