

Recombinant Human IL12B Protein

Cat. No. IL12B-77H Lot. No. (See product label)

SPECIFICATION

Product Overview	Recombinant Human Interleukin-12 subunit beta is produced by our Mammalian expression system and the target gene encoding Ile23-Ser328 is expressed.
Species	Human
Source	Human Cells
ProteinLength	23-328 a.a.
Description	<p>Interleukin-12 subunit beta (IL-12B) belongs to the type I cytokine receptor family. It contains 1 fibronectin type-III domain and 1 Ig-like C2-type domain. IL-12B is a cytokine that acts on T and natural killer cells, and has a broad array of biological activities. IL-12 is a disulfide-linked heterodimer composed of the 40 kD cytokine receptor encoded by IL12B and a 35 kD subunit encoded by IL12A. IL12 is expressed by activated macrophages that serve as an essential inducer of Th1 cells development. It has been found to be important for sustaining a sufficient number of memory/effector Th1 cells to mediate long-term protection to an intracellular pathogen.</p>
Form	Lyophilized from a 0.2 um filtered solution of PBS, pH7.4.
AA Sequence	Ile23-Ser328
Endotoxin	Less than 0.1 ng/ug (1 EU/ug).

 Tel: 1-631-559-9269 1-516-512-3133

 Email: info@creative-biomart.com  Fax: 1-631-938-8127

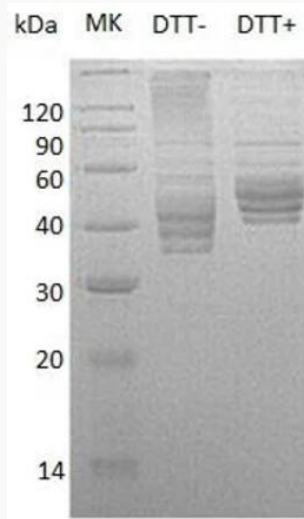
 45-1 Ramsey Road, Shirley, NY 11967, USA

Shipping

Ambient

GENE INFORMATION**Gene Name** IL12B interleukin 12B [Homo sapiens (human)]**Official Symbol** IL12B**Synonyms** Interleukin-12 subunit beta; Cytotoxic lymphocyte maturation factor 40 kDa subunit; p40, IL-12 subunit p40; NK cell stimulatory factor chain 2; NKSF2; CLMF; NKSF; CLMF2; IMD28; IMD29; NKSF2; IL-12B**Gene ID** 3593**mRNA Refseq** NM_002187.3**Protein Refseq** NP_002178.2**MIM** 161561**UniProt ID** P29460 Tel: 1-631-559-9269 1-516-512-3133 Email: info@creative-biomart.com  Fax: 1-631-938-8127 45-1 Ramsey Road, Shirley, NY 11967, USA

SDS-PAGE



 Tel: 1-631-559-9269 1-516-512-3133

 Email: info@creative-biomart.com  Fax: 1-631-938-8127

 45-1 Ramsey Road, Shirley, NY 11967, USA