

Recombinant Cattle IL12B protein, His & T7-tagged

Cat. No. IL12B-844C Lot. No. (See product label)

SPECIFICATION

Product Overview	Recombinant Cattle IL12B aa. (Met23~Ser327 (Accession # P46282)) fused with N-terminal His & T7 tag was produced in E. coli cells.
Species	Cattle
Source	E.coli
ProteinLength	Met23~Ser327
Form	Freeze-dried powder
Molecular Mass	15kDa as determined by SDS-PAGE reducing conditions.
Endotoxin	<1.0EU per 1g (determined by the LAL method)
Purity	> 95%
Characteristic	The isoelectric point is 5.7.
Applications	SDS-PAGE; WB; ELISA; IP
Stability	The thermal stability is described by the loss rate. The loss rate was determined by accelerated thermal degradation test, that is, incubate the protein at 37°C for 48h, and no obvious degradation and precipitation were observed. The loss rate is less than 5% within the expiration date under appropriate storage condition.

 Tel: 1-631-559-9269 1-516-512-3133

 Email: info@creative-biomart.com  Fax: 1-631-938-8127

 45-1 Ramsey Road, Shirley, NY 11967, USA

Storage	Avoid repeated freeze/thaw cycles. Store at 2-8°C for one month. Aliquot and store at -80°C for 12 months.
Storage buffer	Supplied as lyophilized form in PBS, pH7.4, containing 5% trehalose, 0.01% sarcosyl
Reconstitution	Reconstitute in sterile PBS, pH7.2-pH7.4

GENE INFORMATION

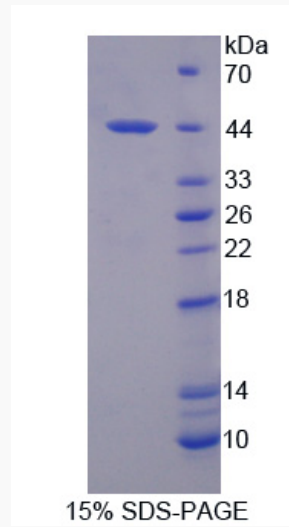
Gene Name	IL12B interleukin 12B [<i>Bos taurus</i> (cattle)]
Official Symbol	IL12B
Synonyms	IL12B; interleukin 12B; IL12p40; interleukin-12 subunit beta; CLMF p40; IL-12 subunit p40; IL-12B; cytotoxic lymphocyte maturation factor 40 kDa subunit; interleukin 12 40kDa subunit; interleukin 12B (natural killer cell stimulatory factor 2, cytotoxic lymphocyte maturation factor 2, p40)
Gene ID	281857
mRNA Refseq	NM_174356.1
Protein Refseq	NP_776781.1
UniProt ID	P46282

 Tel: 1-631-559-9269 1-516-512-3133

 Email: info@creative-biomart.com  Fax: 1-631-938-8127

 45-1 Ramsey Road, Shirley, NY 11967, USA

SDS-PAGE



 Tel: 1-631-559-9269 1-516-512-3133

 Email: info@creative-biomart.com  Fax: 1-631-938-8127

 45-1 Ramsey Road, Shirley, NY 11967, USA