

Recombinant Human IL12RB1 Protein, His-tagged

Cat. No. IL12RB1-074H Lot. No. (See product label)

SPECIFICATION

Product Overview	Recombinant Human IL12RB1 Protein with His tag was expressed in E. coli.
Species	Human
Source	E.coli
Description	Functions as an interleukin receptor which binds interleukin-12 with low affinity and is involved in IL12 transduction. Associated with IL12RB2 it forms a functional, high affinity receptor for IL12. Associates also with IL23R to form the interleukin-23 receptor which functions in IL23 signal transduction probably through activation of the Jak-Stat signaling cascade.
Molecular Mass	~52 kDa
AA Sequence	<p>CRTSECCFQDPPYPDADSGSASGPRDLRCYRISSDRYECSWQYEGPTAGVSHFLR CCLSSGRCCYFAAGSATRLQFSDQAGVSVLYTVTLWVESWARNQTEKSPEVTLQL YNSVKYEPPLGDIKVSCLAGQLRMWETPDNQVGAEVQFRHRTSPSPWKLGDGCP QDDDTESCLCLEMNVAQEFQLRRRQLGSQGSSWSKWSSPVCVPPENPPQPQVR FSVEQLGQDGRRLTLKEQPTQLELPEGCQGLAPGTEVTYRLQLHMLSCPCAKAT RTLHLGKMPYLSGAAYNVAVISSNQFGPGLNQTWHIPADTHTEPVALNISVGTNGTT MYWPARAQSMTYCIEWQPVGQDGGLATCSLTAPQDPDPAGMATYSWSRESGAM GQEKCYITIFASAHPEKLTWSTVLSTYHFGGNASAAGTPHHVSVKNHSLDSVSVD WAPSLSTCPGVLKEYVVRCDKQVSEHPVQPTETQVTLGSLRAGVAYTVQV RADTAWLRGVWSQPQRFSIEVQVSD</p>

 Tel: 1-631-559-9269 1-516-512-3133

 Email: info@creative-biomart.com  Fax: 1-631-938-8127

 45-1 Ramsey Road, Shirley, NY 11967, USA

Purity	Transferred into competent cells and the supernatant was purified by NI column affinity chromatography and the purity is > 85% (by SDS-PAGE).
Notes	For research use only, not for use in diagnostic procedure.
Storage	Store at 4 centigrade short term. Aliquot and store at -20 centigrade long term. Avoid freeze-thaw cycles.
Storage Buffer	PBS, 4M Urea, pH7.4

GENE INFORMATION

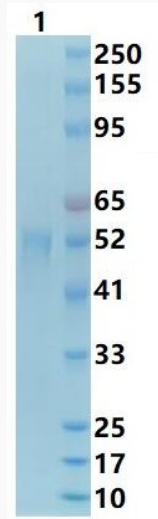
Gene Name	IL12RB1 interleukin 12 receptor, beta 1 [Homo sapiens (human)]
Official Symbol	IL12RB1
Synonyms	IL12RB1; interleukin 12 receptor, beta 1; IL12RB; interleukin-12 receptor subunit beta-1; CD212; IL-12RB1; IL-12R-beta-1; IL-12R subunit beta-1; IL-12 receptor beta component; IL-12 receptor subunit beta-1; interleukin-12 receptor beta-1 chain; IL-12R-BETA1; MGC34454;
Gene ID	3594
mRNA Refseq	NM_005535
Protein Refseq	NP_005526
MIM	601604
UniProt ID	P42701

 Tel: 1-631-559-9269 1-516-512-3133

 Email: info@creative-biomart.com  Fax: 1-631-938-8127

 45-1 Ramsey Road, Shirley, NY 11967, USA

SDS-PAGE



 Tel: 1-631-559-9269 1-516-512-3133

 Email: info@creative-biomart.com  Fax: 1-631-938-8127

 45-1 Ramsey Road, Shirley, NY 11967, USA