

Recombinant Human interleukin 12 receptor, beta 1 Protein, His tagged

Cat. No. IL12RB1-139H Lot. No. (See product label)

SPECIFICATION

Product Overview

Recombinant human IL12RB1 protein (P42701) (Cys 24-Glu 540) with a His tag at the C-terminus was expressed in HEK293.

Species

Human

Source

HEK293

ProteinLength

24-540aa

Description

Interleukin 12 (IL-12) is a key mediator of cellular-immunity and induces the differentiation of Th1 cells from precursor T helper cells. The biological activities of IL-12 are mediated through the high-affinity receptor complex composed of two subunits designated IL-12 R beta 1 and IL-12 R beta 2. Individually, IL-12 R beta 1 and IL-12 R beta 2 bind IL-12 with low affinity. Co-expression of both subunits confers high-affinity binding and is required for IL-12 activity. Both IL-12 receptor subunits are type I membrane proteins that share similarities with the gp130/G-CSF R subgroup in the cytokine receptor superfamily. IL-12 R beta 1 cDNA encodes a 662 amino acid (aa) residue protein with a putative 23 aa residue signal peptide that is cleaved to generate the mature protein with a 522 aa residue extracellular domain, a 25 aa residue transmembrane domain and a 92 aa residue cytoplasmic region. Expression of IL-12 R beta 1 has been detected in activated T cells, NK cells and B cells. The expression of IL-12 R beta 2 is more restricted and appears to be limited to Th2 cells.

 Tel: 1-631-559-9269 1-516-512-3133

 Email: info@creative-biomart.com  Fax: 1-631-938-8127

 45-1 Ramsey Road, Shirley, NY 11967, USA

Tag	C-His
Molecular Mass	58.5 kDa
Endotoxin	Less than 1.0 EU/μg by the LAL method.
Purity	>90% as determined by SDS-PAGE.
Storage	Please avoid repeated freeze-thaw cycles. Samples are stable for up to twelve months from date of receipt at -20 to -80 centigrade. It is recommended that aliquot the reconstituted solution to minimize freeze-thaw cycles.
Storage Buffer	Lyophilized from a 0.2 μm filtered solution of PBS, pH7.4, 5% Trehalose, 5% mannitol.
Reconstitution	Reconstitute at 250 μg/mL in sterile water.
GENE INFORMATION	
Gene Name	IL12RB1 interleukin 12 receptor, beta 1 [Homo sapiens (human)]
Official Symbol	IL12RB1
Synonyms	IL12RB1; interleukin 12 receptor, beta 1; IL12RB; interleukin-12 receptor subunit beta-1; CD212; IL-12RB1; IL-12R-beta-1; IL-12R subunit beta-1; IL-12 receptor beta component; IL-12 receptor subunit beta-1; interleukin-12 receptor beta-1 chain; IL-12R-BETA1; MGC34454;
Gene ID	3594
mRNA Refseq	NM_005535

 Tel: 1-631-559-9269 1-516-512-3133

 Email: info@creative-biomart.com  Fax: 1-631-938-8127

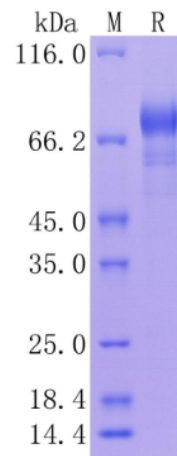
 45-1 Ramsey Road, Shirley, NY 11967, USA

Protein Refseq NP_005526

MIM 601604

UniProt ID P42701

Protein on SDS-PAGE under reducing (R) condition.



 Tel: 1-631-559-9269 1-516-512-3133

 Email: info@creative-biomart.com  Fax: 1-631-938-8127

 45-1 Ramsey Road, Shirley, NY 11967, USA