

Recombinant Human IL12RB1 protein, hFc-Avi-tagged

Cat. No. IL12RB1-6332H Lot. No. (See product label)

SPECIFICATION

Product Overview	Recombinant Human IL12RB1 protein(P42701)(24-545aa), fused with C-hFc-Avi tag, was expressed in E.coli.
Species	Human
Source	E.coli
ProteinLength	24-545a.a.
Tag	hFc-Avi
Form	If the delivery form is liquid, the default storage buffer is Tris/PBS-based buffer, 5%-50% glycerol. If the delivery form is lyophilized powder, the buffer before lyophilization is Tris/PBS-based buffer, 6% Trehalose, pH 8.0.
Molecular Mass	85.5 kDa
Purity	Greater than 85% as determined by SDS-PAGE.
Storage	Store at -20°C/-80°C upon receipt, aliquoting is necessary for mutiple use. Avoid repeated freeze-thaw cycles.
Reconstitution	We recommend that this vial be briefly centrifuged prior to opening to bring the contents to the bottom. Please reconstitute protein in deionized sterile water to a concentration of 0.1-1.0 mg/mL.We recommend to add 5-50% of glycerol (final

 Tel: 1-631-559-9269 1-516-512-3133

 Email: info@creative-biomart.com  Fax: 1-631-938-8127

 45-1 Ramsey Road, Shirley, NY 11967, USA

concentration) and aliquot for long-term storage at -20°C/-80°C.

AA Sequence

```

CRTSECCFQDPPYPDADSGSASGPRDLRCYRISSDRYECSWQYEGPTAGVSHFLR
CCLSSGRCCYFAAGSATRLQFSDQAGVSVLYTVTLWVESWARNQTEKSPEVTLQL
YNSVKYEPPLGDIKVSCLAGQLRMEWETPDNQVGAEVQFRHRTSPSPWKLGDGCP
QDDDTESCLCLEMNVAQEFQLRRRQLGSQGSSWSKWSSPVCVPPENPPQPQVR
FSVEQLGQDGRRLTLKEQPTQLELPEGCQGLAPGTEVTYRLQLHMLSCPCKAKAT
RTLHLGKMPYLSGAAYNVAVISSNQFGPGLNQTWHIPADTHTEPVALNISVGTNGTT
MYWPARAQSMTYCIEWQPVGQDGLATCSLTAPQDPDPAGMATYSWSRESGAM
GQEKCYITIFASAHPEKLTWSTVLSTYHFGGNASAAGTPHHVSVKNHSLDSVSD
WAPSLSTCPGVLKEYVVRCDKQVSEHPVQPTETQVTL SGLRAGVAYTVQV
RADTAWLRGVWSQPQRFSIEVQVSD
    
```

GENE INFORMATION

Gene Name [IL12RB1 interleukin 12 receptor, beta 1 \[Homo sapiens \]](#)

Official Symbol [IL12RB1](#)

Synonyms [IL12RB1](#); interleukin 12 receptor, beta 1; [IL12RB](#); interleukin-12 receptor subunit beta-1; [CD212](#); [IL-12RB1](#); [IL-12R-beta-1](#); [IL-12R subunit beta-1](#); [IL-12 receptor beta component](#); [IL-12 receptor subunit beta-1](#); [interleukin-12 receptor beta-1 chain](#); [IL-12R-BETA1](#); [MGC34454](#);

Gene ID [3594](#)

mRNA Refseq [NM_005535](#)

Protein Refseq [NP_005526](#)

MIM [601604](#)

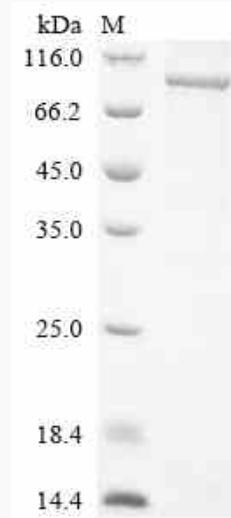
 Tel: 1-631-559-9269 1-516-512-3133

 Email: info@creative-biomart.com  Fax: 1-631-938-8127

 45-1 Ramsey Road, Shirley, NY 11967, USA

UniProt ID P42701

SDS-PAGE



 Tel: 1-631-559-9269 1-516-512-3133

 Email: info@creative-biomart.com  Fax: 1-631-938-8127

 45-1 Ramsey Road, Shirley, NY 11967, USA