

## Recombinant Human IL12RB1 protein, Fc-tagged

Cat. No. IL12RB1-73H Lot. No. (See product label)

### SPECIFICATION

<b>Product Overview</b>	Recombinant Human IL12RB1 (Cys24-Glu540) protein was fused to human IgG1 Fc tag at C-terminus and expressed in human 293 cells (HEK293).
<b>Species</b>	Human
<b>Source</b>	HEK293
<b>ProteinLength</b>	Cys24-Glu540
<b>Description</b>	The human IL-12 R subunit is a member of the cytokine receptor superfamily and the functional high-affinity IL-12R is composed of at least two beta-type cytokine receptor subunits, each independently exhibiting a low affinity for IL-12. IL-12 R beta 1 (Interleukin-12 receptor subunit beta-1) is also known as IL-12RB1, CD212. Functions as an interleukin receptor which binds interleukin-12 with low affinity and is involved in IL12 transduction. Associated with IL12RB2 it forms a functional, high affinity receptor for IL12. Associates also with IL23R to form the interleukin-23 receptor which functions in IL23 signal transduction probably through activation of the Jak-Stat signaling cascade.
<b>Predicted N Terminal</b>	Cys24
<b>Form</b>	Lyophilized from 0.22 µm filtered solution in Tris with Glycine, Arginine and NaCl, pH7.5, 10% trehalose.
<b>Molecular Mass</b>	The protein has a calculated MW of 83.5 kDa. The protein migrates as 90 kDa under

 Tel: 1-631-559-9269 1-516-512-3133

 Email: [info@creative-biomart.com](mailto:info@creative-biomart.com)  Fax: 1-631-938-8127

 45-1 Ramsey Road, Shirley, NY 11967, USA

	reducing (R) condition (SDS-PAGE) due to glycosylation.
<b>Endotoxin</b>	Less than 1.0 EU per µg by the LAL method.
<b>Purity</b>	>95% as determined by reduced SDS-PAGE.
<b>Storage</b>	<p>For long term storage, the product should be stored at lyophilized state at -20 centigrade or lower.</p> <p>Please avoid repeated freeze-thaw cycles.</p> <p>This product is stable after storage at:</p> <p>-20 to -70 centigrade for 12 months in lyophilized state;</p> <p>-70 centigrade for 3 months under sterile conditions after reconstitution.</p>
<b>Reconstitution</b>	It is recommended that sterile water be added to the vial to prepare a stock solution of 0.2 ug/ul. Centrifuge the vial at 4°C before opening to recover the entire contents.

## GENE INFORMATION

<b>Gene Name</b>	<a href="#">IL12RB1</a>
<b>Official Symbol</b>	<a href="#">IL12RB1</a>
<b>Synonyms</b>	IL12RB1; interleukin 12 receptor, beta 1; IL12RB; interleukin-12 receptor subunit beta-1; CD212; IL-12RB1; IL-12R-beta-1; IL-12R subunit beta-1; IL-12 receptor beta component; IL-12 receptor subunit beta-1; interleukin-12 receptor beta-1 chain; IL-12R-BETA1; MGC34454
<b>Gene ID</b>	<a href="#">3594</a>
<b>mRNA Refseq</b>	<a href="#">NM_005535</a>

 Tel: 1-631-559-9269 1-516-512-3133

 Email: [info@creative-biomart.com](mailto:info@creative-biomart.com)  Fax: 1-631-938-8127

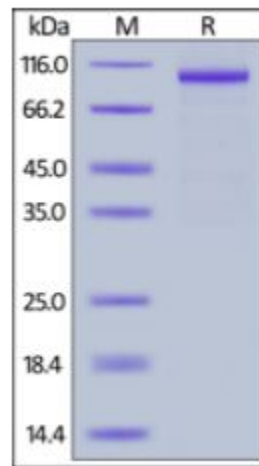
 45-1 Ramsey Road, Shirley, NY 11967, USA

Protein Refseq NP\_005526

MIM 601604

UniProt ID P42701

**SDS-PAGE of  
IL12RB1-73H**



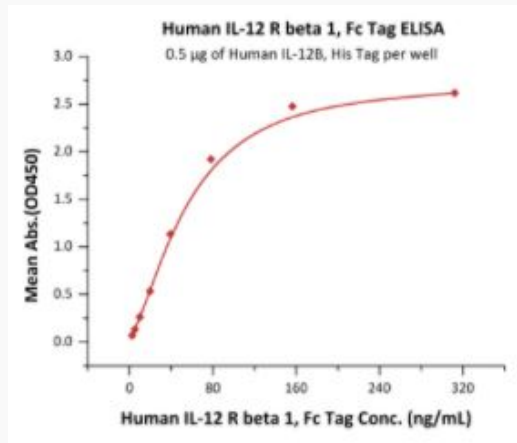
Human IL-12 R beta 1, Fc Tag on SDS-PAGE under reducing (R) condition. The gel was stained overnight with Coomassie Blue. The purity of the protein is greater than 95%.

Tel: 1-631-559-9269 1-516-512-3133


Email: [info@creative-biomart.com](mailto:info@creative-biomart.com) Fax: 1-631-938-8127

45-1 Ramsey Road, Shirley, NY 11967, USA

**Bioactivity-ELISA of  
IL12RB1-73H**



Immobilized Human IL-12B, His Tag at 5 µg/mL (100 µL/well) can bind Human IL-12 R beta 1, Fc Tag with a linear range of 5-78 ng/mL (QC tested).

 Tel: 1-631-559-9269 1-516-512-3133

 Email: [info@creative-biomart.com](mailto:info@creative-biomart.com)  Fax: 1-631-938-8127

 45-1 Ramsey Road, Shirley, NY 11967, USA