

## Recombinant Human IL12RB2 Protein, His-tagged

**Cat. No.** IL12RB2-3230H **Lot. No.** (See product label)

### SPECIFICATION

<b>Product Overview</b>	Recombinant Human IL12RB2 protein with a His tag was expressed in HEK293.
<b>Species</b>	Human
<b>Source</b>	HEK293
<b>Description</b>	<p>The protein encoded by this gene is a type I transmembrane protein identified as a subunit of the interleukin 12 receptor complex. The coexpression of this and IL12RB1 proteins was shown to lead to the formation of high-affinity IL12 binding sites and reconstitution of IL12 dependent signaling. The expression of this gene is up-regulated by interferon gamma in Th1 cells, and plays a role in Th1 cell differentiation. The up-regulation of this gene is found to be associated with a number of infectious diseases, such as Crohn's disease and leprosy, which is thought to contribute to the inflammatory response and host defense. Several transcript variants encoding different isoforms and non-protein coding transcripts have been found for this gene.</p>
<b>Molecular Mass</b>	68.5 kDa
<b>AA Sequence</b>	<p>KIDACKRGDVTVKPSHVILLGSTVNITCSLKPRQGCFHYSRRNKLILYKFDRRINFHH            GHSLNSQVTGLPLGTTLFVCKLACINSDEIQCIGAEIFVGVAPEQPQNLSCIQKGEQG            TVACTWGERGRDTHLYTEYTLQLSGPKNLTWQKQCKDIYCDYLDGFINLTPESPESNF            TAKVTAVNSLGSSSSLPSTFTFLDIVRPLPPWDIRIKFQKASVSRCTLYWRDEGLVLL            NRLRYRPSNSRLWNMNVNVTAKGRHDLDDLKPFTEYEFQISSKLHLYKGSWSDWS            ESLRAQTPEEEPTGMLDVWYMKRHIDYSRQQISLFWKNLSVSEARGKILHYQVTLQ</p>

 Tel: 1-631-559-9269 1-516-512-3133

 Email: [info@creative-biomart.com](mailto:info@creative-biomart.com)  Fax: 1-631-938-8127

 45-1 Ramsey Road, Shirley, NY 11967, USA

ELTGGKAMTQNITGHTSWTTVIPRTGNWAVAVSAANSKGSSLPTRINIMNLCEAGLL  
 APRQVSANSEGMDNILVTWQPPRKDPSAVQEYVVEWRELHPGGDTQVPLNWLRS  
 RPYNVSALISENIKSYICYEIRVYALSGDQGGCSSLGNSKHKAPLSGPHINAITEEKG  
 SILISWNSIPVQEQMGCLLHYRIYWKERDSNSQPQLCEIPYRVSQNSHPINSLQPRVT  
 YVLWMTALTAAGESSHGNEREFCLQGKANHHHHHH

**Purity** > 80% by SDS-PAGE

**Storage** Store it under sterile conditions at -20 to -80 centigrade. It is recommended that the protein be aliquoted for optimal storage. Avoid repeated freeze-thaw cycles.

**Concentration** 0.85 mg/mL

**Storage Buffer** Supplied as a 0.2 µm filtered solution in PBS, pH7.4.

## GENE INFORMATION

**Gene Name** IL12RB2 interleukin 12 receptor subunit beta 2 [ Homo sapiens (human) ]

**Official Symbol** IL12RB2

**Synonyms** IL12RB2; interleukin 12 receptor subunit beta 2; interleukin-12 receptor subunit beta-2; IL-12 receptor subunit beta-2; IL-12R subunit beta-2; interleukin 12 receptor, beta 2; interleukin-12 receptor beta-2 chain

**Gene ID** 3595

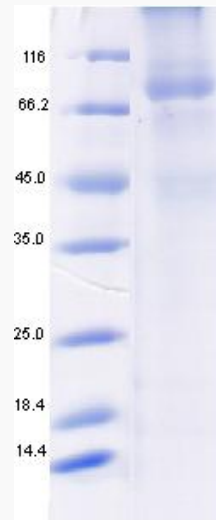
**mRNA Refseq** NM\_001559

**Protein Refseq** NP\_001550

 Tel: 1-631-559-9269 1-516-512-3133

 Email: [info@creative-biomart.com](mailto:info@creative-biomart.com)  Fax: 1-631-938-8127

 45-1 Ramsey Road, Shirley, NY 11967, USA

**MIM** 601642**UniProt ID** Q99665**SDS-Page**

Reducing 12% SDS-PAGE analysis profile of purified IL12RB2 (CBB stained)

 Tel: 1-631-559-9269 1-516-512-3133 Email: [info@creative-biomart.com](mailto:info@creative-biomart.com)  Fax: 1-631-938-8127 45-1 Ramsey Road, Shirley, NY 11967, USA