

Recombinant Human IL12RB2 protein, Fc-tagged

Cat. No. IL12RB2-73H Lot. No. (See product label)

SPECIFICATION

Product Overview	Recombinant Human IL12RB2 protein with Fc-tag was expressed in HEK293.
Species	Human
Source	HEK293
Description	<p>The protein encoded by this gene is a type I transmembrane protein identified as a subunit of the interleukin 12 receptor complex. The coexpression of this and IL12RB1 proteins was shown to lead to the formation of high-affinity IL12 binding sites and reconstitution of IL12 dependent signaling. The expression of this gene is up-regulated by interferon gamma in Th1 cells, and plays a role in Th1 cell differentiation. The up-regulation of this gene is found to be associated with a number of infectious diseases, such as Crohn's disease and leprosy, which is thought to contribute to the inflammatory response and host defense. Several transcript variants encoding different isoforms and non-protein coding transcripts have been found for this gene.</p>
Molecular Mass	The protein has a calculated MW of 95 kDa.
AA Sequence	<p>KIDACKRGDVTVKPSHVILLGSTVNITCSLKPRQGCFFHYSRRNKLILYKFDRRINFHH GHSLNSQVTGLPLGTTLFVCKLACINSDEIQCIAEIVGVVAPEQPQNLSIQKGEQG TVACTWGERGRDTHLYTEYTLQLSGPKNLTWQKQCKDIYCDYLDGFINLTPESPESNF TAKVTAVNSLGSSSSLPSTFTFLDIVRPLPPWDIRIKFQKASVSRCTLYWRDEGLVLL NRLRYRPSNSRLWNMNVNVTAKGRHDLDDLKPFTEYEFQISSKLHLYKGSWSDWS ESLRAQTPEEEPTGMLDVWYMKRHIDYSRQQISLFWKNLSVSEARGKILHYQVTLQ</p>

 Tel: 1-631-559-9269 1-516-512-3133

 Email: info@creative-biomart.com  Fax: 1-631-938-8127

 45-1 Ramsey Road, Shirley, NY 11967, USA

ELTGGKAMTQNITGHTSWTTVIPRTGNWAVAVSAANSKGSSLPTRINIMNLCEAGLL
 APRQVSANSEGMDNILVTWQPPRKDPSAVQEYVVEWRELHPGGDTQVPLNWLR
 RPYNVSALISENIKSYICYEIRVYALSGDQGGCSSILGNSKHKAPLSGPHINAITEEKG
 SILISWNSIPVQEQMGCLLHYRIYWKERDSNSQPQLCEIPYRVSQNSHPINSLQPRVT
 YVLWMTALTAAGESSHGNEREFCLQGKANLEVLFGQPEPKSSDKTHTCPPCPAPEL
 LGGPSVFLFPPKPKDTLMISRTPEVTCVVVDVSHEDPEVKFNWYVDGVEVHNAKTK
 PREEQYNSTYRVVSVLTVLHQDWLNGKEYKCKVSNKALPAPIEKTISKAKGQPREP
 QVYTLPPSRDELTKNQVSLTCLVKGFYPSDIAVEWESNGQPENNYKTTTPVLDSGD
 SFFLYSKLTVDKSRWQQGNVFCSSVMHEALHNHYTQKSLSLSPGK

Purity >80%, by SDS-PAGE

Storage Store it under sterile conditions at -20 to -80 centigrade. It is recommended that the protein be aliquoted for optimal storage. Avoid repeated freeze-thaw cycles.

Concentration 0.4 mg/ml

Storage Buffer Supplied as a 0.2 µm filtered solution in PBS, pH7.4.

GENE INFORMATION

Gene Name [IL12RB2 interleukin 12 receptor subunit beta 2 \[Homo sapiens \(human\) \]](#)

Official Symbol [IL12RB2](#)

Synonyms IL12RB2; interleukin 12 receptor subunit beta 2; interleukin-12 receptor subunit beta-2; IL-12 receptor subunit beta-2; IL-12R subunit beta-2; interleukin 12 receptor, beta 2; interleukin-12 receptor beta-2 chain

Gene ID [3595](#)

 Tel: 1-631-559-9269 1-516-512-3133

 Email: info@creative-biomart.com  Fax: 1-631-938-8127

 45-1 Ramsey Road, Shirley, NY 11967, USA

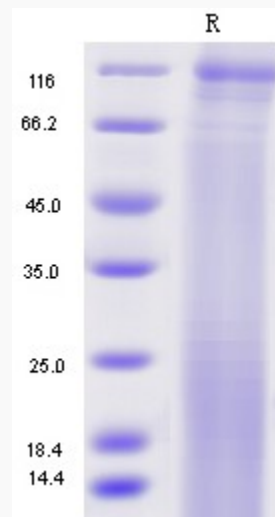
mRNA Refseq [NM_001559](#)

Protein Refseq [NP_001550](#)

MIM [601642](#)

UniProt ID [Q2M3V3](#)

SDS-PAGE



Reducing 12% SDS-PAGE analysis profile of purified IL12RB2 (CBB stained)

 Tel: 1-631-559-9269 1-516-512-3133

 Email: info@creative-biomart.com  Fax: 1-631-938-8127

 45-1 Ramsey Road, Shirley, NY 11967, USA