

Active Recombinant Human IL12RB2 Protein, Fc/His-tagged

Cat. No. IL12RB2-9483H **Lot. No.** (See product label)

SPECIFICATION

Product Overview	Recombinant Human IL-12 R beta 2 protein (Lys24-Asn622) with Human IgG1 (Pro100-Lys330) and a 6-His tag at C-terminus was expressed in mouse myeloma cell line.
Species	Human
Source	Mammalian Cells
ProteinLength	24-622 a.a.
Description	The protein encoded by this gene is a type I transmembrane protein identified as a subunit of the interleukin 12 receptor complex. The coexpression of this and IL12RB1 proteins was shown to lead to the formation of high-affinity IL12 binding sites and reconstitution of IL12 dependent signaling. The expression of this gene is up-regulated by interferon gamma in Th1 cells, and plays a role in Th1 cell differentiation. The up-regulation of this gene is found to be associated with a number of infectious diseases, such as Crohn's disease and leprosy, which is thought to contribute to the inflammatory response and host defense. Several transcript variants encoding different isoforms and non-protein coding transcripts have been found for this gene.
Form	Lyophilized
Bio-activity	Measured by its binding ability in a functional ELISA. When Recombinant Human IL-12 is immobilized at 0.5 µg/mL, 100 µL/well, the concentration of Recombinant

 Tel: 1-631-559-9269 1-516-512-3133

 Email: info@creative-biomart.com  Fax: 1-631-938-8127

 45-1 Ramsey Road, Shirley, NY 11967, USA

	Human IL-12 R beta 2 Fc that produces 50% of the optimal binding response is 0.015-0.09 µg/mL.
Molecular Mass	95 kDa
N-terminal Sequence Analysis	Lys24
Endotoxin	<0.10 EU per 1 g of the protein by the LAL method.
Purity	> 95%, by SDS-PAGE under reducing conditions and visualized by silver stain.
Storage	Use a manual defrost freezer and avoid repeated freeze-thaw cycles. 12 months from date of receipt, -20 to -70 centigrade as supplied. 1 month, 2 to 8 centigrade under sterile conditions after reconstitution. 3 months, -20 to -70 centigrade under sterile conditions after reconstitution.
Storage Buffer	Lyophilized from a 0.2 µm filtered solution in PBS with Trehalose.
Reconstitution	Reconstitute at 250 µg/mL in PBS.
Shipping	The product is shipped at ambient temperature.

GENE INFORMATION

Gene Name	IL12RB2 interleukin 12 receptor subunit beta 2 [Homo sapiens (human)]
Official Symbol	IL12RB2
Synonyms	IL12RB2; interleukin 12 receptor subunit beta 2; interleukin-12 receptor subunit beta-2; IL-12 receptor subunit beta-2; IL-12R subunit beta-2; interleukin 12 receptor, beta

 Tel: 1-631-559-9269 1-516-512-3133

 Email: info@creative-biomart.com  Fax: 1-631-938-8127

 45-1 Ramsey Road, Shirley, NY 11967, USA

2; interleukin-12 receptor beta-2 chain

Gene ID [3595](#)

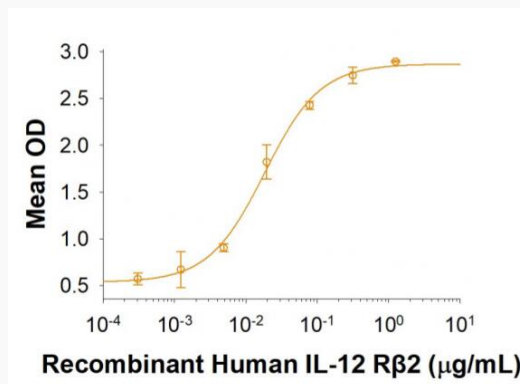
mRNA Refseq [NM_001559](#)

Protein Refseq [NP_001550](#)

MIM [601642](#)

UniProt ID [Q99665](#)

Binding Activity



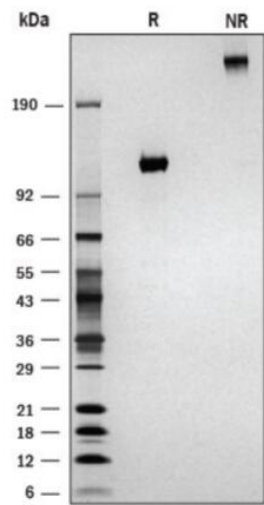
When Recombinant Human IL-12 is immobilized at 0.5 g/mL, Recombinant Human IL-12 R beta 2 Fc Chimera binds with an ED50 of 0.015-0.09 g/mL.

 Tel: 1-631-559-9269 1-516-512-3133

 Email: info@creative-biomart.com  Fax: 1-631-938-8127

 45-1 Ramsey Road, Shirley, NY 11967, USA

SDS-PAGE



1 µg/lane of Recombinant Human IL-12 R beta 2 was resolved with SDS-PAGE under reducing (R) and non-reducing (NR) conditions and visualized by silverstaining, showing bands at 112-133 kDa and 220-260 kDa, respectively.

 Tel: 1-631-559-9269 1-516-512-3133

 Email: info@creative-biomart.com  Fax: 1-631-938-8127

 45-1 Ramsey Road, Shirley, NY 11967, USA