

Recombinant Rhesus Interleukin 13

Cat. No. IL13-146R Lot. No. (See product label)

SPECIFICATION

Product Overview	Recombinant Rhesus Interleukin 13 encoding the Rhesus IL13 (NP_001028101.1) (Met 1 – Asn 132) precursor was expressed in <i>CHO Cells</i> .
Species	Rhesus macaque
Source	CHO
ProteinLength	1-132 a.a.
Description	<p>Interleukin 13 (IL-13) is a single-chain cytokine which belongs to the IL13/IL4 family. In humans, IL13 is secreted by many cell types, but especially by T helper type 2 (Th2) cells. IL13 inhibits the production of pro-inflammatory cytokines and chemokines, and thus down-regulates macrophage activity. Meanwhile, IL-13 synergizes with IL2 in regulating IFN-gamma synthesis. IL-13 binds to a multi-subunit receptor comprising the alpha chain of the IL-4 receptor (IL-4Rα) and at least one of two known IL-13-specific binding chains (IL13 Rα1 and IL13 Rα2), and exerts its effects through signal transducer and activator of transcription 6 (STAT6), like IL-4. Accordingly, IL-13 may be critical in regulating inflammatory and immune responses as a central mediator in various cell types.</p>
Molecular Mass	The recombinant rhesus IL13 consists of 112 amino acids and has a calculated molecular mass of 12 kDa also estimated by SDS-PAGE under reducing conditions.
Predicted N Terminal	Ser 21.

 Tel: 1-631-559-9269 1-516-512-3133

 Email: info@creative-biomart.com  Fax: 1-631-938-8127

 45-1 Ramsey Road, Shirley, NY 11967, USA

Endotoxin	< 1.0 EU per 1µg cytokine as determined by the LAL method.
Formulation	Supplied as a 0.2µm filtered solution of 20 mM Tris, 10 mM NaCl, pH 8.0.
Reconstitution	Follow the instructions on the vial. Centrifuge the vial at 4°C before opening to recover the entire contents.
Purity	> 97%, as determined by SDS-PAGE.
Stability	Samples are stable for up to twelve months from date of receipt -70°C.
Storage	Store it under sterile conditions at -70°C. It is recommended that the protein be aliquoted for optimal storage and be used as soon as possible. Avoid repeated freeze-thaw cycles.

GENE INFORMATION

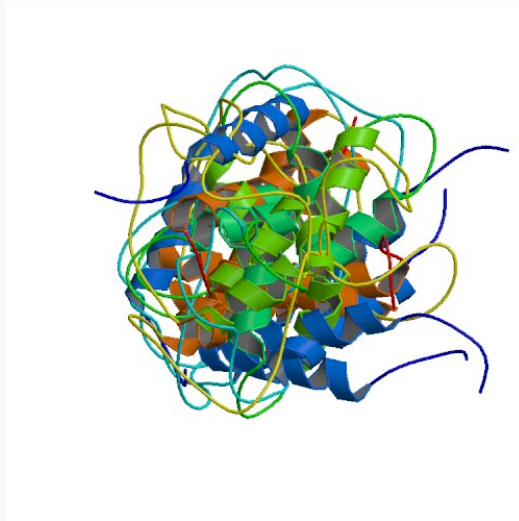
Gene Name	IL13 interleukin 13 [<i>Macaca mulatta</i>]
Synonyms	IL13; interleukin 13;interleukin-13
Gene ID	574325
mRNA Refseq	NM_001032929
Protein Refseq	NP_001028101
UniProt ID	Q864V6
Pathway	Asthma; Cytokine-cytokine receptor interaction; Fc epsilon RI signaling pathway; Jak-STAT signaling pathway

 Tel: 1-631-559-9269 1-516-512-3133

 Email: info@creative-biomart.com  Fax: 1-631-938-8127

 45-1 Ramsey Road, Shirley, NY 11967, USA

PDB rendering based
on 1ga3.



 Tel: 1-631-559-9269 1-516-512-3133

 Email: info@creative-biomart.com  Fax: 1-631-938-8127

 45-1 Ramsey Road, Shirley, NY 11967, USA