

## Recombinant Human IL13 protein, Fc-tagged

Cat. No. IL13-229H Lot. No. (See product label)

### SPECIFICATION

<b>Product Overview</b>	Recombinant Human IL13 (Gly21-Asn132) protein was fused to human IgG1 Fc tag at C-terminus and expressed in human 293 cells (HEK293).
<b>Species</b>	Human
<b>Source</b>	HEK293
<b>ProteinLength</b>	Gly21-Asn132
<b>Description</b>	<p>Interleukin 13 (IL13) is also known as ALRH, BHR1 and P600, is a single-chain glycosylated polypeptide, and is a cytokine critical in regulating inflammatory and immune responses. IL13 is secreted by many cell types, but especially by T helper type 2 (Th2) cells. IL-13 induces its effects through a multi-subunit receptor that includes the alpha chain of the IL-4 receptor (IL-4R<math>\alpha</math>) and at least one of two known IL-13-specific binding chains. The functions of IL-13 overlap considerably with those of IL-4, especially with regard to changes induced on hematopoietic cells, but these effects are probably less important given the more potent role of IL-4. IL-13 induces matrix metalloproteinases (MMPs) as part of a mechanism that protects against excessive allergic inflammation that predisposes to asphyxiation. IL-13 induces many features of allergic lung disease, including airway hyperresponsiveness, goblet cell metaplasia and mucus hypersecretion, which all contribute to airway obstruction.</p>
<b>Predicted N Terminal</b>	Gly21
<b>Form</b>	Lyophilized from 0.22

 Tel: 1-631-559-9269 1-516-512-3133

 Email: [info@creative-biomart.com](mailto:info@creative-biomart.com)  Fax: 1-631-938-8127

 45-1 Ramsey Road, Shirley, NY 11967, USA

	µm filtered solution in Tris with Glycine, Arginine and NaCl, pH7.5, 10% trehalose.
<b>Molecular Mass</b>	The protein has a calculated MW of 38.8 kDa. The protein migrates as 50-60 kDa under reducing (R) condition (SDS-PAGE) due to glycosylation.
<b>Endotoxin</b>	Less than 1.0 EU per µg by the LAL method.
<b>Purity</b>	>90% as determined by SDS-PAGE.
<b>Storage</b>	<p>For long term storage, the product should be stored at lyophilized state at -20 centigrade or lower.</p> <p>Please avoid repeated freeze-thaw cycles.</p> <p>This product is stable after storage at:</p> <p>-20 to -70 centigrade for 12 months in lyophilized state;</p> <p>-70 centigrade for 3 months under sterile conditions after reconstitution.</p>
<b>Reconstitution</b>	It is recommended that sterile water be added to the vial to prepare a stock solution of 0.2 ug/ul. Centrifuge the vial at 4°C before opening to recover the entire contents.
<b>GENE INFORMATION</b>	
<b>Gene Name</b>	IL13
<b>Official Symbol</b>	IL13
<b>Synonyms</b>	IL13; interleukin 13; interleukin-13; allergic rhinitis; ALRH; BHR1; Bronchial hyperresponsiveness 1 (bronchial asthma); IL 13; MGC116786; MGC116788; MGC116789; P600; Bronchial hyperresponsiveness-1 (bronchial asthma); IL-13
<b>Gene ID</b>	3596

 Tel: 1-631-559-9269 1-516-512-3133

 Email: [info@creative-biomart.com](mailto:info@creative-biomart.com)  Fax: 1-631-938-8127

 45-1 Ramsey Road, Shirley, NY 11967, USA

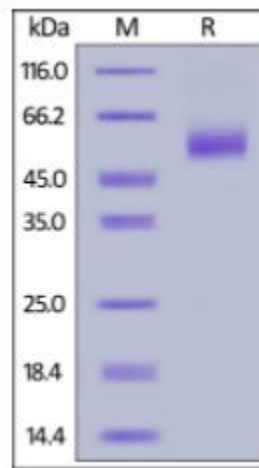
mRNA Refseq [NM\\_002188](#)

Protein Refseq [NP\\_002179](#)

MIM [147683](#)

UniProt ID [P35225](#)

**SDS-PAGE of IL13-  
229H**



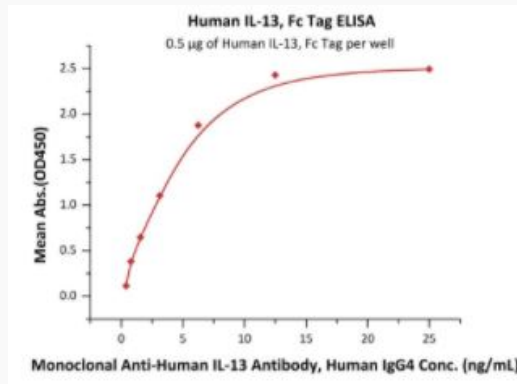
Human IL-13, Fc Tag on SDS-PAGE under reducing (R) condition. The gel was stained overnight with Coomassie Blue. The purity of the protein is greater than 90%.

 Tel: 1-631-559-9269 1-516-512-3133

 Email: [info@creative-biomart.com](mailto:info@creative-biomart.com)  Fax: 1-631-938-8127

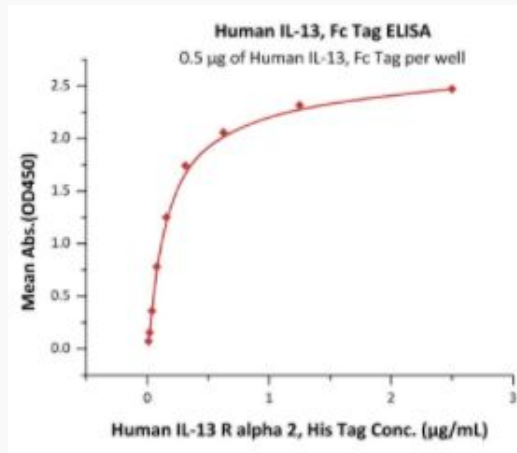
 45-1 Ramsey Road, Shirley, NY 11967, USA

**Bioactivity-ELISA of  
IL13-229H**




Immobilized Human IL-13, Fc Tag at 5 µg/mL (100 µL/well) can bind Monoclonal Anti-Human IL-13 Antibody, Human IgG4 with a linear range of 0.4-6 ng/mL (QC tested).


**Bioactivity-ELISA**



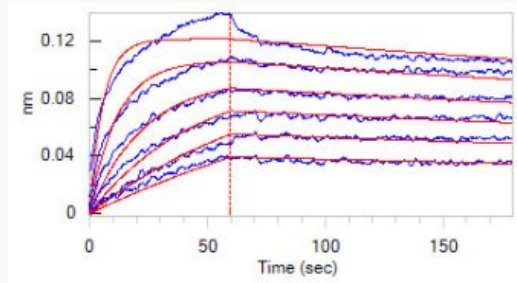
Immobilized Human IL-13, Fc Tag at 5 µg/mL (100 µL/well) can bind Human IL-13 R alpha 2, His Tag with a linear range of 0.02-0.313 µg/mL (Routinely tested).

 Tel: 1-631-559-9269 1-516-512-3133

 Email: [info@creative-biomart.com](mailto:info@creative-biomart.com)  Fax: 1-631-938-8127

 45-1 Ramsey Road, Shirley, NY 11967, USA


**Bioactivity-BLI of  
IL13-229H**



Loaded Human IL-13, Fc Tag on Protein A Biosensor, can bind Human IL-13 R alpha 2, His Tag with an affinity constant of 6.09 nM as determined in BLI assay (ForteBio Octet Red96e) (Routinely tested).

 Tel: 1-631-559-9269 1-516-512-3133

 Email: [info@creative-biomart.com](mailto:info@creative-biomart.com)  Fax: 1-631-938-8127

 45-1 Ramsey Road, Shirley, NY 11967, USA