

## Recombinant Equine Interleukin 13

Cat. No. IL13-252E    Lot. No. (See product label)

### SPECIFICATION

<b>Product Overview</b>	Recombinant Equine IL-13 was expressed in Yeast. MW= 12.6 kDa (115 aa).
<b>Species</b>	Equine
<b>Source</b>	Yeast
<b>Description</b>	IL13 is an immunoregulatory cytokine produced primarily by activated Th2 cells. IL-13 is involved in several stages of B-cell maturation and differentiation. It up-regulates CD23 and MHC class II expression, and promotes IgE isotype switching of B cells. This cytokine down-regulates macrophage activity, thereby inhibits the production of pro-inflammatory cytokines and chemokines. This cytokine is found to be critical to the pathogenesis of allergen-induced asthma but operates through mechanisms independent of IgE and eosinophils. This gene, IL3, IL5, IL4, and CSF2 form a cytokine gene cluster on chromosome 5q, with this gene particularly close to IL4.
<b>Formulation/ Reconstitution</b>	Lyophilized. Reconstitute with sterile phosphate-buffered saline containing at least 0.1% carrier protein.
<b>Purification</b>	Ion-exchange chromatography.
<b>Purity</b>	>95% as visualized by SDS-PAGE analysis.
<b>Amino Acid Sequence</b>	SPAPLPSSMA LKELIKELVN ITQNPAPLCN GSMVWSVNLT ADTYCRALES LSNVSTCSAI QNTRKMLTKL CPHQLSAGQV SSERARDTKI EVIVLVKDLL KNLRKIFHGG KHVDA.

 Tel: 1-631-559-9269    1-516-512-3133

 Email: [info@creative-biomart.com](mailto:info@creative-biomart.com)     Fax: 1-631-938-8127

 45-1 Ramsey Road, Shirley, NY 11967, USA

**Bioactivity** In testing.

**Stability And Storage** Stable for up to twelve months from date of receipt at -20°C. Stable for at least 3 months when stored in working aliquots with a carrier protein at -20°C. Avoid repeated freeze/thaw cycles.

## GENE INFORMATION

**Gene Name** IL-13 interleukin-13 [ *Equus caballus* ]

**Synonyms** interleukin-13; IL-13

**Gene ID** 100034113

**mRNA Refseq** NM\_001143791.1

**Protein Refseq** NP\_001137263.1

**Chromosome Location** 14

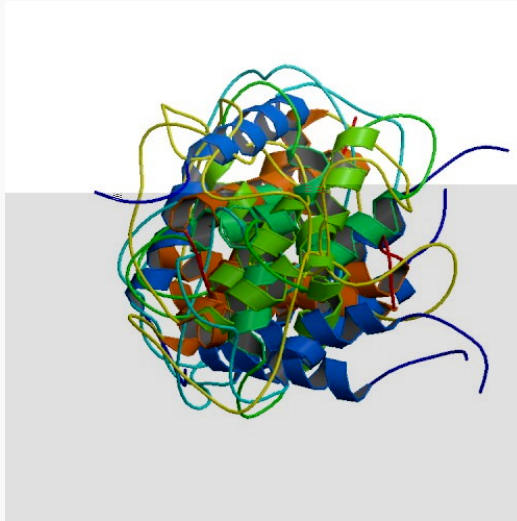
**Pathway** Asthma; Cytokine-cytokine receptor interaction; Fc epsilon RI signaling pathway; Jak-STAT signaling pathway

 Tel: 1-631-559-9269 1-516-512-3133

 Email: [info@creative-biomart.com](mailto:info@creative-biomart.com)  Fax: 1-631-938-8127

 45-1 Ramsey Road, Shirley, NY 11967, USA

PDB rendering based  
on 1ga3.



 Tel: 1-631-559-9269 1-516-512-3133

 Email: [info@creative-biomart.com](mailto:info@creative-biomart.com)  Fax: 1-631-938-8127

 45-1 Ramsey Road, Shirley, NY 11967, USA