

## Active Recombinant Human IL13 protein, Fc-tagged

Cat. No. IL13-365H Lot. No. (See product label)

### SPECIFICATION

<b>Product Overview</b>	Human IL-13, Fc Tag is expressed from human 293 cells (HEK293). It contains AA Leu 25 - Asn 146 (Accession # NP_002179.2).
<b>Species</b>	Human
<b>Source</b>	HEK293
<b>ProteinLength</b>	Leu 25 - Asn 146
<b>Description</b>	<p>Interleukin 13 (IL13) is also known as ALRH, BHR1 and P600, is a single-chain glycosylated polypeptide, and is a cytokine critical in regulating inflammatory and immune responses. IL13 is secreted by many cell types, but especially by T helper type 2 (Th2) cells. IL-13 induces its effects through a multi-subunit receptor that includes the alpha chain of the IL-4 receptor (IL-4R<math>\alpha</math>) and at least one of two known IL-13-specific binding chains. The functions of IL-13 overlap considerably with those of IL-4, especially with regard to changes induced on hematopoietic cells, but these effects are probably less important given the more potent role of IL-4. IL-13 induces matrix metalloproteinases (MMPs) as part of a mechanism that protects against excessive allergic inflammation that predisposes to asphyxiation. IL-13 induces many features of allergic lung disease, including airway hyperresponsiveness, goblet cell metaplasia and mucus hypersecretion, which all contribute to airway obstruction.</p>
<b>Predicted N Terminal</b>	Gly
<b>Form</b>	Lyophilized from 0.22

 Tel: 1-631-559-9269 1-516-512-3133

 Email: [info@creative-biomart.com](mailto:info@creative-biomart.com)  Fax: 1-631-938-8127

 45-1 Ramsey Road, Shirley, NY 11967, USA

	µm filtered solution in 50 mM Tris, 100 mM Glycine, pH7.5, 10% trehalose.
<b>Bio-activity</b>	Measured by its binding ability in a functional ELISA. Immobilized Human IL-13RA1, His Tag at 10 µg/mL (100 µL/well) can bind Human IL-13, Fc Tag with a linear range of 0.256-10 µg/mL. Measured by its binding ability in a functional ELISA. Immobilized Human IL-13, Fc Tag at 10 µg/mL (100 µL/well) can bind Anti IL-13 MAb, Human IgG4 with a linear range of 0.8-25 ng/mL.
<b>Molecular Mass</b>	This protein carries a human IgG1 Fc tag at the N-terminus. The protein has a calculated MW of 40.2 kDa. The protein migrates as 45-60 kDa under reducing (R) condition (SDS-PAGE) due to glycosylation.
<b>Endotoxin</b>	Less than 1.0 EU per µg by the LAL method.
<b>Purity</b>	>95% as determined by SDS-PAGE.
<b>Storage</b>	For long term storage, the product should be stored at lyophilized state at -20°C or lower. Please avoid repeated freeze-thaw cycles. No activity loss is observed after storage at: 4-8°C for 12 months in lyophilized state; -70°C for 3 months under sterile conditions after reconstitution.
<b>Storage buffer</b>	50 mM Tris, 100 mM Glycine, pH7.5
<b>Reconstitution</b>	It is recommended that sterile water be added to the vial to prepare a stock solution of 0.2 ug/ul. Centrifuge the vial at 4°C before opening to recover the entire contents.
<b>Shipping</b>	Powder, RT

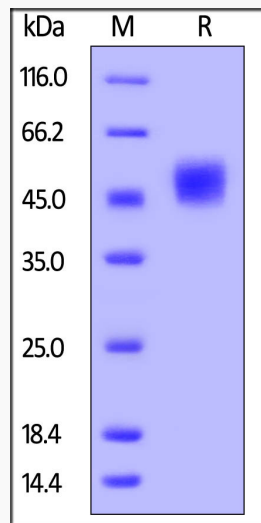
## GENE INFORMATION

 Tel: 1-631-559-9269 1-516-512-3133

 Email: [info@creative-biomart.com](mailto:info@creative-biomart.com)  Fax: 1-631-938-8127

 45-1 Ramsey Road, Shirley, NY 11967, USA

<b>Gene Name</b>	IL13 interleukin 13 [ Homo sapiens (human) ]
<b>Official Symbol</b>	IL13
<b>Synonyms</b>	P600; IL-13; interleukin-13
<b>Gene ID</b>	3596
<b>mRNA Refseq</b>	NM_002188.2
<b>Protein Refseq</b>	NP_002179.2
<b>UniProt ID</b>	P35225

**SDS-PAGE**


Human IL-13, Fc Tag on SDS-PAGE under reducing (R) condition. The gel was stained overnight with Coomassie Blue. The purity of the protein is greater than 95%.

 Tel: 1-631-559-9269 1-516-512-3133

 Email: [info@creative-biomart.com](mailto:info@creative-biomart.com)  Fax: 1-631-938-8127

 45-1 Ramsey Road, Shirley, NY 11967, USA