

## Recombinant Human Interleukin 13, His-tagged

Cat. No. IL13-44H Lot. No. (See product label)

### SPECIFICATION

<b>Product Overview</b>	Recombinant Human Interleukin-13 His produced in <i>E. Coli</i> is a single, non-glycosylated, Polypeptide chain containing 112 amino acids fragment (21-132) having a molecular weight of 12.84 kDa with a 4 kDa amino-terminal his-tagged. The IL-13 His is purified by proprietary chromatographic techniques.
<b>Species</b>	Human
<b>Source</b>	E.coli
<b>ProteinLength</b>	21-132 a.a.
<b>Description</b>	Interleukin-13 is a pleiotropic regulatory cytokine, which shares many of the properties of Interleukin-4. IL-13 is produced primarily by activated T lymphocytes and acts via specific cell surface receptor complexes. Its biological activities include the stimulation of B-cell proliferation and differentiation and the regulation of inflammatory and immune responses.
<b>Physical Appearance</b>	Sterile Filtered clear solution (0.1 mg/ml).
<b>Purity</b>	Greater than 95.0% as determined by: (a) Analysis by RP-HPLC. (b) Analysis by SDS-PAGE.
<b>Formulation</b>	Interleukin -13 His-Tag protein is supplied in 50mM Sodium Acetate (pH 4.8) and 50% glycerol.

 Tel: 1-631-559-9269 1-516-512-3133

 Email: [info@creative-biomart.com](mailto:info@creative-biomart.com)  Fax: 1-631-938-8127

 45-1 Ramsey Road, Shirley, NY 11967, USA

**Storage** Store at 4°C if entire vial will be used within 2-4 weeks. Store, frozen at -20°C for longer periods of time. Please avoid freeze thaw cycles.

## GENE INFORMATION

**Gene Name** [IL13 interleukin 13 \[ Homo sapiens \]](#)

**Synonyms** IL13; interleukin 13; ALRH; BHR1; P600; IL-13; MGC116786; MGC116788; MGC116789; Interleukin-13; NC30

**Gene ID** [3596](#)

**mRNA Refseq** [NM\\_002188](#)

**Protein Refseq** [NP\\_002179](#)

**MIM** [147683](#)

**UniProt ID** [P35225](#)

**Chromosome Location** 5q31

**Pathway** Asthma; Cytokine-cytokine receptor interaction; Fc epsilon RI signaling pathway; Jak-STAT signaling pathway

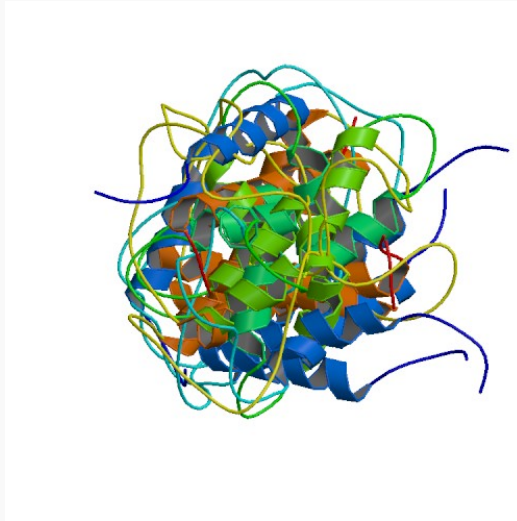
**Function** cytokine activity; interleukin-13 receptor binding; protein binding

 Tel: 1-631-559-9269 1-516-512-3133

 Email: [info@creative-biomart.com](mailto:info@creative-biomart.com)  Fax: 1-631-938-8127

 45-1 Ramsey Road, Shirley, NY 11967, USA

PDB rendering based  
on 1ga3.



 Tel: 1-631-559-9269 1-516-512-3133

 Email: [info@creative-biomart.com](mailto:info@creative-biomart.com)  Fax: 1-631-938-8127

 45-1 Ramsey Road, Shirley, NY 11967, USA